

73 Lilly Court, 21 Fullbrook Drive – RG21 6AW

£270,000 Leasehold

Parking: 1 allocated space plus an additional permit. • Service Charge £2300 P/A • Ground Rent £200 P/A • Lease 990 years remain • Open plan kitchen/ lounge / diner • Ensuite to master • Impressive grand entrance • Bright, stylish interior with Art Deco detailing

01256 321777

www.thepropertyexplorer.co.uk

the property
explorer

EXPLORER is delighted to present this spacious and beautifully finished Art Deco-inspired luxury apartment, offering two double bedrooms and two bathrooms. Converted in 2019 and located within the highly sought-after Chapel Gate development
Council Tax band: C

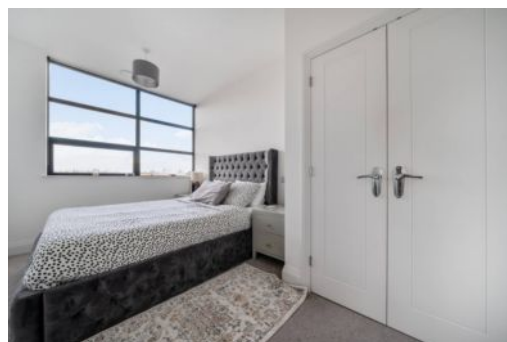
Tenure: Leasehold

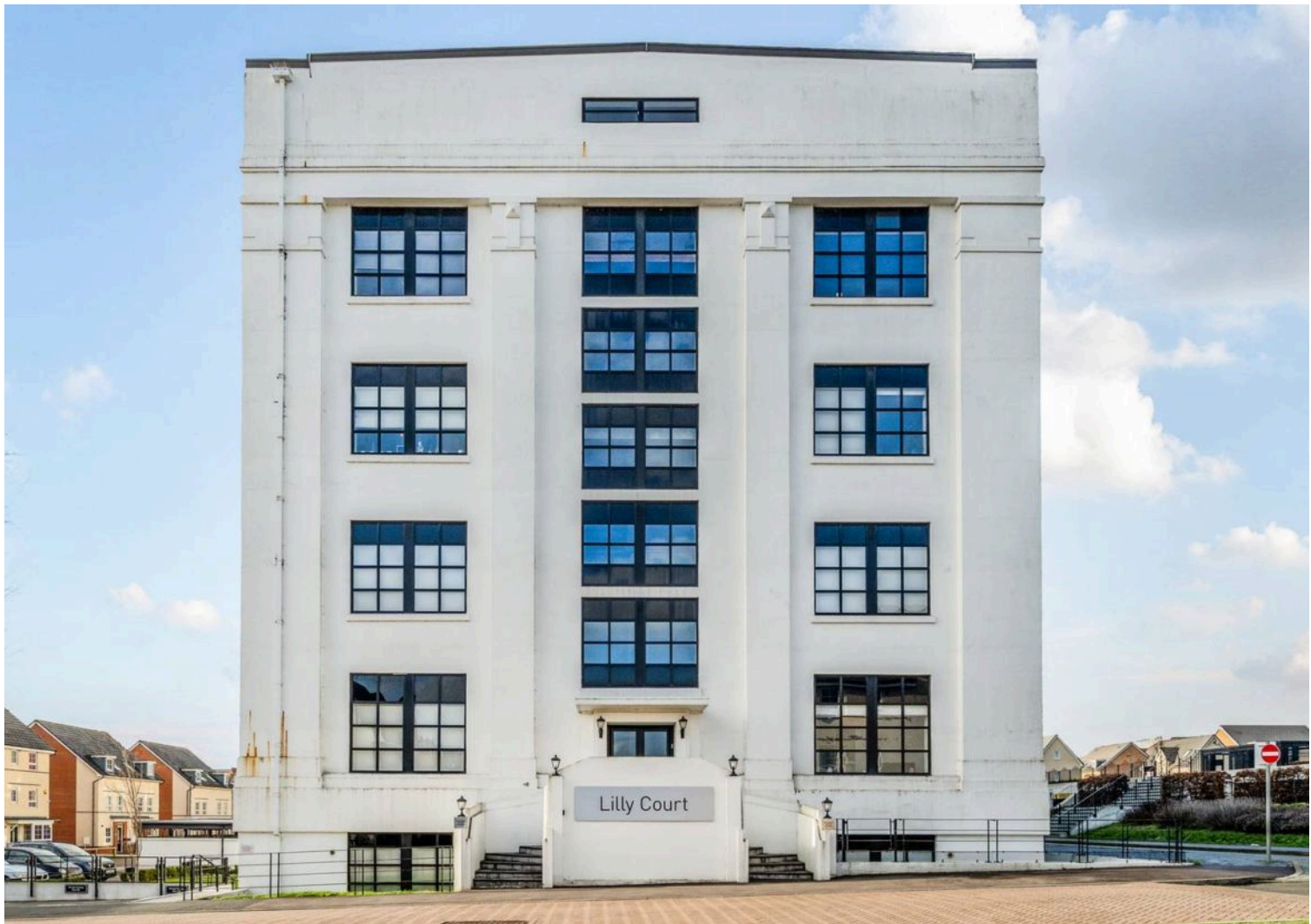
EPC Energy Efficiency Rating: B

EPC Environmental Impact Rating: B



- Parking: 1 allocated space plus an additional permit.
- Service Charge £2300 P/A
- Ground Rent £200 P/A
- Lease 990 years remain
- Open plan kitchen/ lounge / diner
- Ensuite to master
- Impressive grand entrance
- Bright, stylish interior with Art Deco detailing

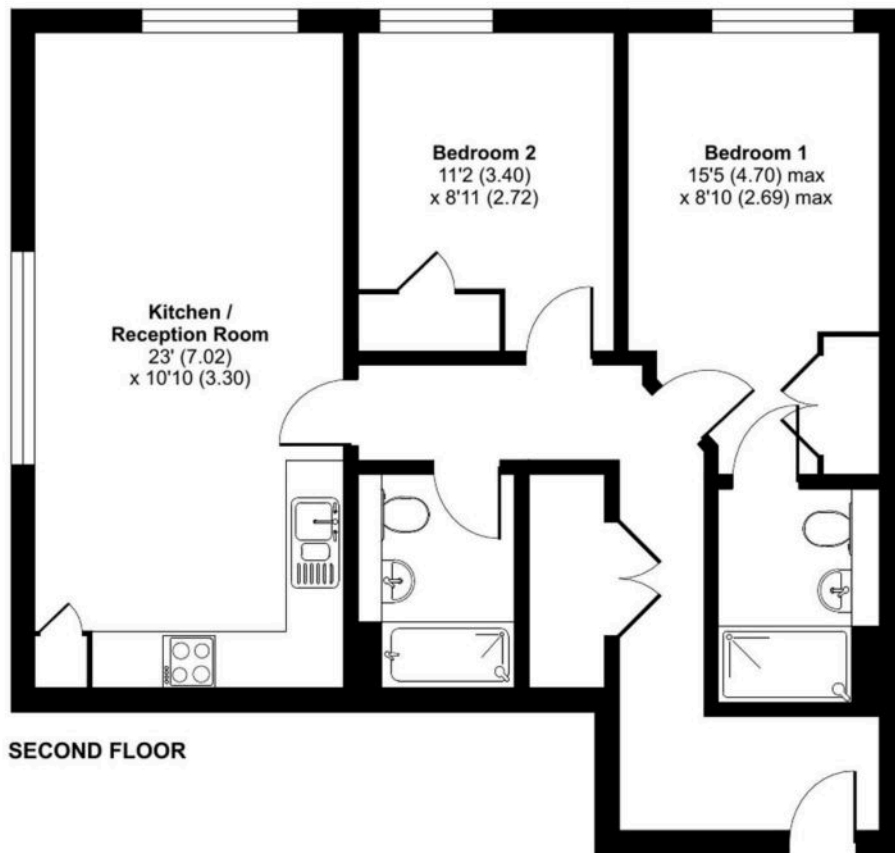




Fullbrook Drive, Basingstoke, RG21

Approximate Area = 728 sq ft / 67.6 sq m

For identification only - Not to scale



Floor plan produced in accordance with RICS Property Measurement 2nd Edition, Incorporating International Property Measurement Standards (IPMS2 Residential). © nichecom 2025. Produced for Property Explorer. REF: 1388481

You can include any text here. The text can be modified upon generating your brochure.