



Cosway Street

Marylebone, NW1

Asking Price £420,000

Sole Agent. A well-proportioned one-bedroom apartment benefitting from its own entrance and private patio garden.

The property has a semi-open plan kitchen, a modern shower room and a double bedroom with direct access to the private patio garden.

Located 0.2 miles from Marylebone Underground (Bakerloo Line), 0.3 miles from Edgware Road Underground (Circle, Hammersmith & City and District Lines), 0.4 miles from Baker Street Underground (Bakerloo, Jubilee, Metropolitan, Circle and Hammersmith & City Lines) and 0.6 miles from Regent's Park.



Cosway Street

Marylebone, NW1

- One Bedroom Apartment
- 414 sq. ft.
- 983 Year Leasehold
- Private patio/garden
- Separate entrance



Tenure: Leasehold
Service Charge: £2,304pa including building insurance.
Ground Rent: £0
Local Authority: City of Westminster
Council Tax Band: C

Energy Efficiency Rating		Current	Potential
Very energy efficient - lower running costs	A		
(91-101)	B		
(81-90)	C	73	78
(61-80)	D		
(51-60)	E		
(31-50)	F		
(1-20)	G		
Not energy efficient - higher running costs			
England, Scotland & Wales		EU Directive 2002/91/EC	

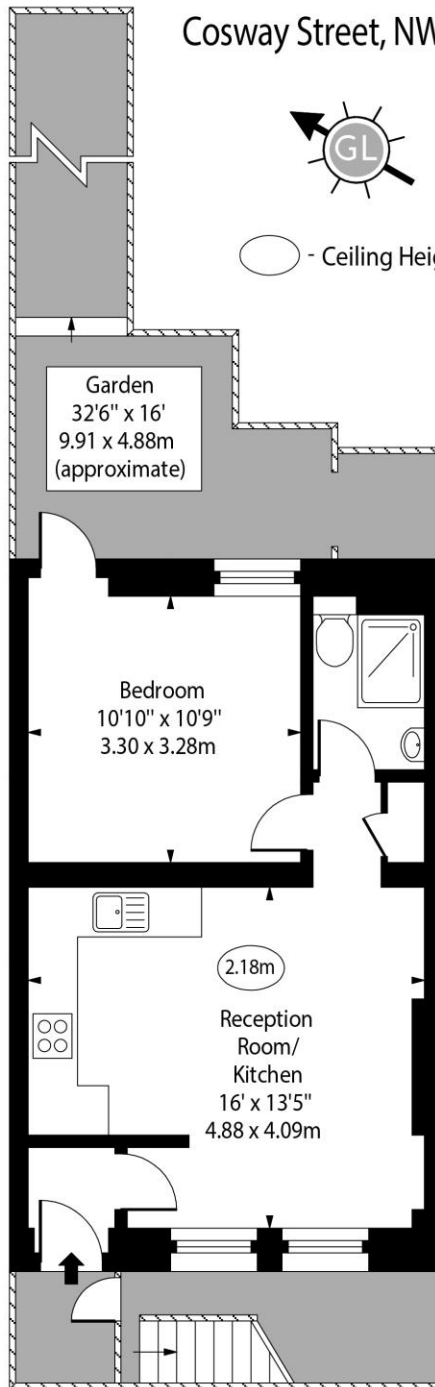
Chestertons St John's Wood Sales

105 St. John's Wood Terrace
 London
 NW8 6PL
 stjohnswood@chestertons.co.uk
 020 3040 8611
 chestertons.co.uk

Cosway Street, NW1



○ - Ceiling Height



Lower Ground Floor

Approx Gross Internal Area 414 Sq Ft - 38.46 Sq M

For Illustration Purposes Only - Not To Scale

www.goldlens.co.uk

Produced for Chestertons

Ref. No. 024762AG

