

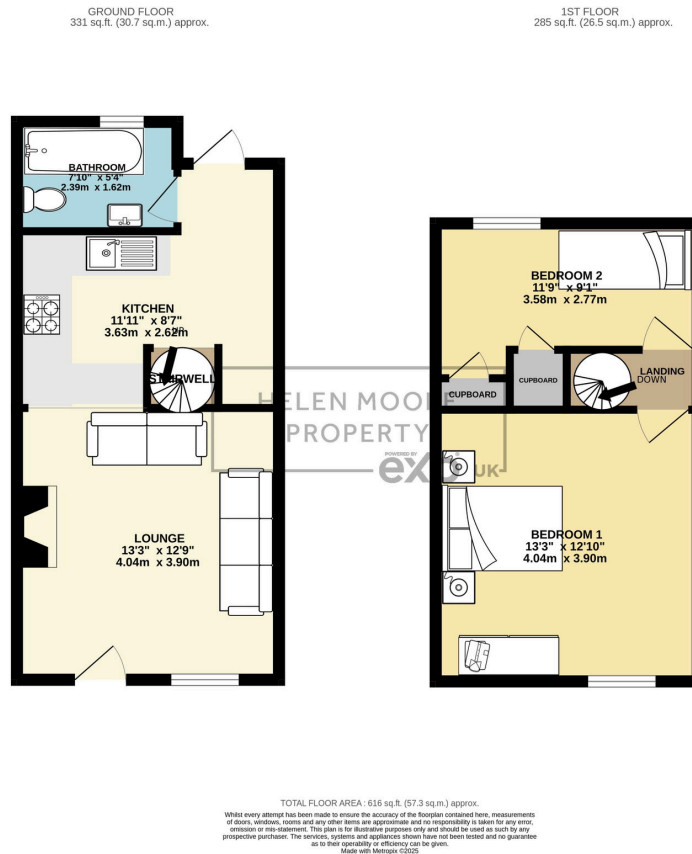
## Totnes Road, South Brent, Devon

Offers Over £190,000

2 1 1



- Period End-Terrace Cottage In Central South Brent
- Characterful Lounge With Inglenook Fireplace And Wood Burner
- Recently Installed Bathroom
- Generous Double Bedroom and Single Bedroom
- Edge Of Dartmoor Location With Excellent A38 Transport Links
- Popular Village Location Close To Local Amenities
- Fitted Kitchen
- Two First Floor Bedrooms
- Pretty Garden With Lawn, Shrubs And Summer House
- Gas Central Heating



A charming period end-terrace cottage located in the heart of the popular South Brent village.

The property opens into a cosy lounge with inglenook fireplace and wood-burning stove, leading through to a fitted kitchen and recently installed bathroom. Upstairs are two bedrooms, comprising a generous double and a large single.

HELEN MOORE  
PROPERTY

POWERED BY  
**exp** UK

@ [hello@helenmooreproperty.com](mailto:hello@helenmooreproperty.com)

 [helenmoore.exp.uk.com](https://helenmoore.exp.uk.com)

 01752 962 162

To the rear is access via a shared courtyard to a pretty garden with lawn, shrubs and a modern summer house. South Brent sits on the edge of Dartmoor, offering village amenities and excellent A38 links to Totnes, Plymouth and Exeter.