

Staines Road West, TW16

£255,000

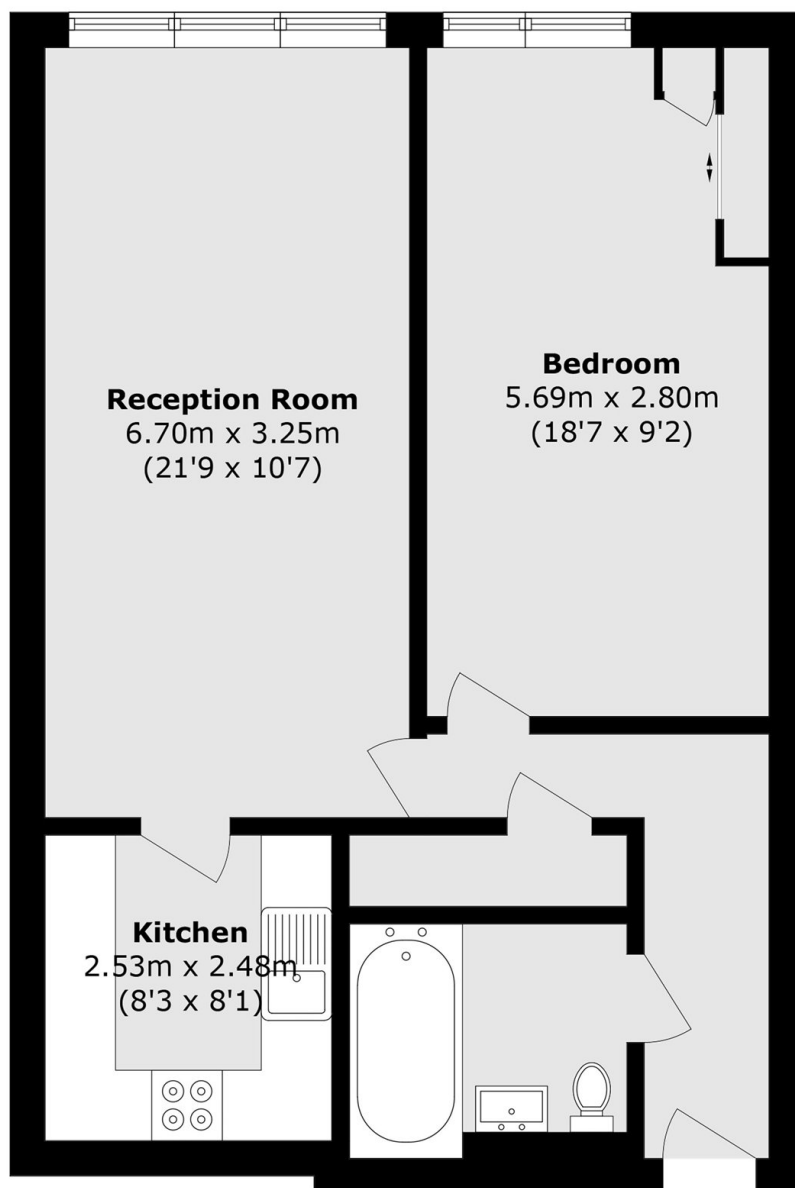
A beautifully presented second floor modern apartment, carefully maintained by the current owners to preserve its stylish look and feel. Ideal for investors or first time buyers looking to get onto the property ladder.

Crownage Court is located close to Sunbury Station and the A316/M3 for easy access into London and beyond. The local shops at Sunbury Cross are just across the road.

Features

- Modern Apartment
- Purpose Built Block
- Long Lease
- Lift Access
- Under Floor Heating
- Allocated Parking

Staines Road West, Sunbury-On-Thames, TW16



Total area (approx.): 57.8 sq. m (622.2 sq. ft)