



59 Garston Crescent, Watford, WD25 0LD

Offers In Excess Of £850,000



Nestled in the sought-after area of Garston Crescent, Watford, this impressive detached family home in a premier location offers a perfect blend of space, comfort, and convenience. Spanning an expansive 1,722 square feet, the property boasts two reception rooms, providing ample room for both relaxation and entertaining.

Upon entering, you are greeted by a generous sitting room that serves as the heart of the home, ideal for everyday living. The large kitchen and dining area is perfect for family meals, while the family room at the rear adds an extra dimension of space, perfect for gatherings. Under floor heating throughout the ground floor adds a touch of luxury. Completing the ground floor is a convenient shower room and WC, enhancing the practicality of the layout.

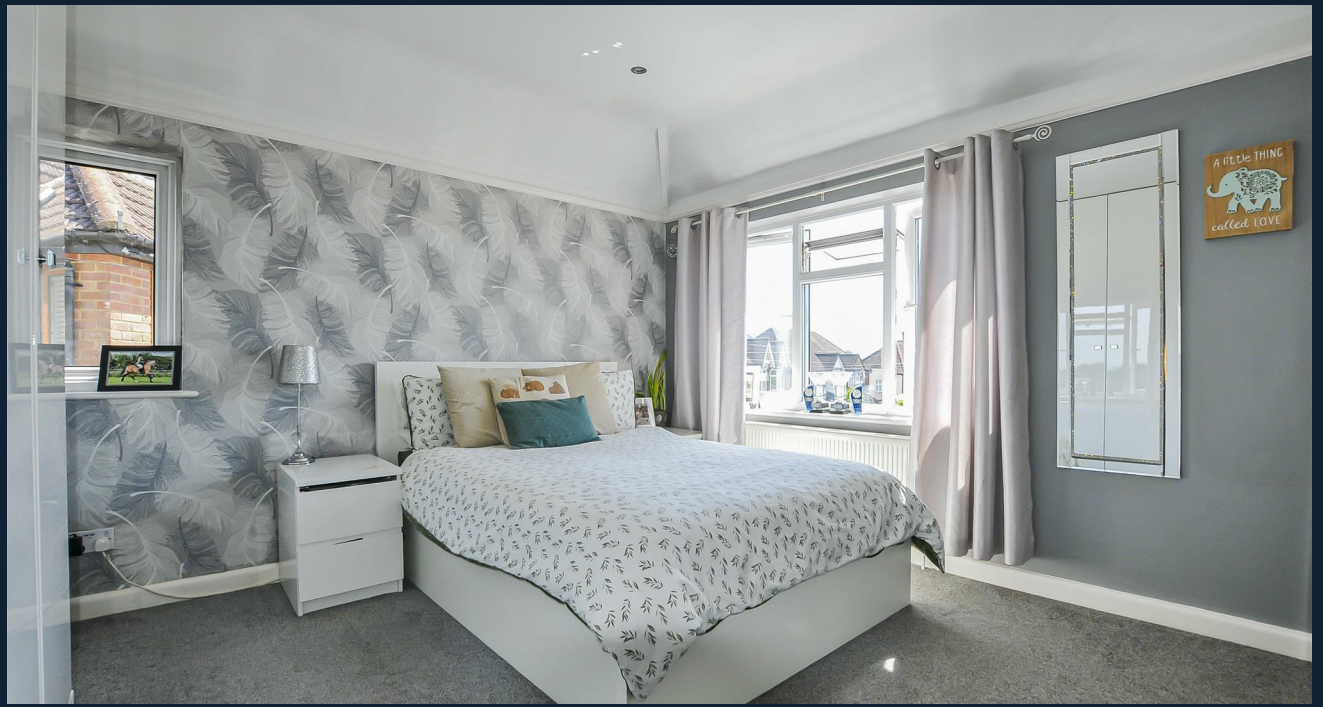
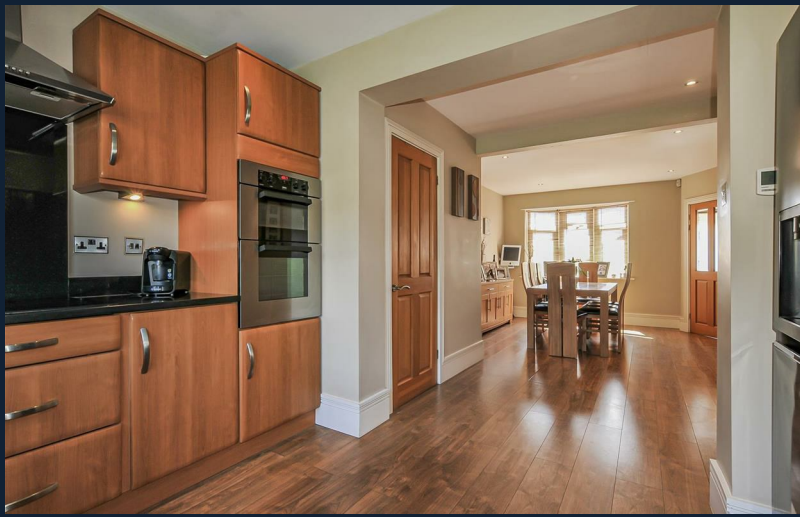
The first floor features four well-proportioned bedrooms, ensuring plenty of room for family or guests. The main bedroom is particularly noteworthy, offering built-in wardrobe space and a private en suite bathroom. The main bathroom serves the remaining bedrooms, providing comfort and convenience for all.

Step outside to discover a delightful rear garden, complete with a patio area that leads to an elevated artificial lawn and decking, perfect for outdoor entertaining or simply enjoying the sunshine. Additionally, a versatile garden room offers the potential for use as a gym, storage, or a creative space to suit your needs.

Parking is a breeze with space for multiple vehicles, complemented by a garage that includes a separate office space, ideal for those who work from home. The property is conveniently located near local amenities, highly regarded schools, and excellent transport links, with Garston Train Station just 0.9 miles away.

This charming home is a wonderful opportunity for families seeking a spacious and well-appointed residence in a desirable location.







- Premier Location Within Garston
- Extended Detached Family Home
- Four Bedrooms & Three Bathrooms
- Underfloor Heating Throughout The Ground Floor
- Spacious & Light Filled Kitchen/Dining Room
 - Garden Room
 - Garage & Office
- Ample Off Street Parking Available
- Good Transport Links - 0.9 miles From Garston Train Station
- Close Proximity to Local Amenities & Highly Regarded Schools





CARTER HAYWARD
INDEPENDENT ESTATE AGENTS





CARTER HAYWARD
INDEPENDENT ESTATE AGENTS

119 Oakwood Road
Bricket Wood, St Albans
Hertfordshire
AL2 3QB

Tel: 01923682 888

Email: sales@carterhayward.co.uk

Web: www.carterhayward.co.uk

