



## Byron Court

Fairfax Road, NW6

£3,250 per month  
(£750 per week)

This stylish two-bedroom apartment, located on the fourth floor of a well-maintained, purpose-built block, offers a perfect blend of comfort and convenience. Featuring beautiful wood flooring throughout and elegant wood blinds, the property is both bright and modern. The fully equipped, fitted kitchen includes all essential appliances such as a washing machine, fridge freezer, hob, and oven, making it ideal for everyday living. The family bathroom is fully tiled and includes a power shower, while a separate guest cloakroom adds extra convenience. The spacious double-aspect reception room is flooded with natural light and leads to a private balcony, perfect for enjoying the views. Additional highlights include gas central heating, a lift in the building, and porter service for added peace of mind. The property is set in beautifully maintained communal gardens, offering a tranquil retreat from the city. Byron Court is ideally located on Fairfax Road, just moments from Finchley Road Underground Station (Jubilee Line, Zone 2) and close to a wide selection of local buses, shops, and amenities. Off-street parking is available, providing added convenience for those with a car.

**CHESTERTONS**



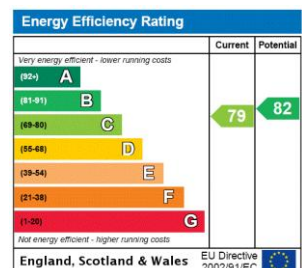
# Byron Court

Fairfax Road, NW6

- Furnished
- Private Balcony
- Communal Gardens
- Lift in the Building
- Porter



**Deposit Required:** £3,750.00  
**Local Authority:** London Borough Of Camden  
**Council Tax Band:** E  
**EPC Rating:** C  
**Furnished**



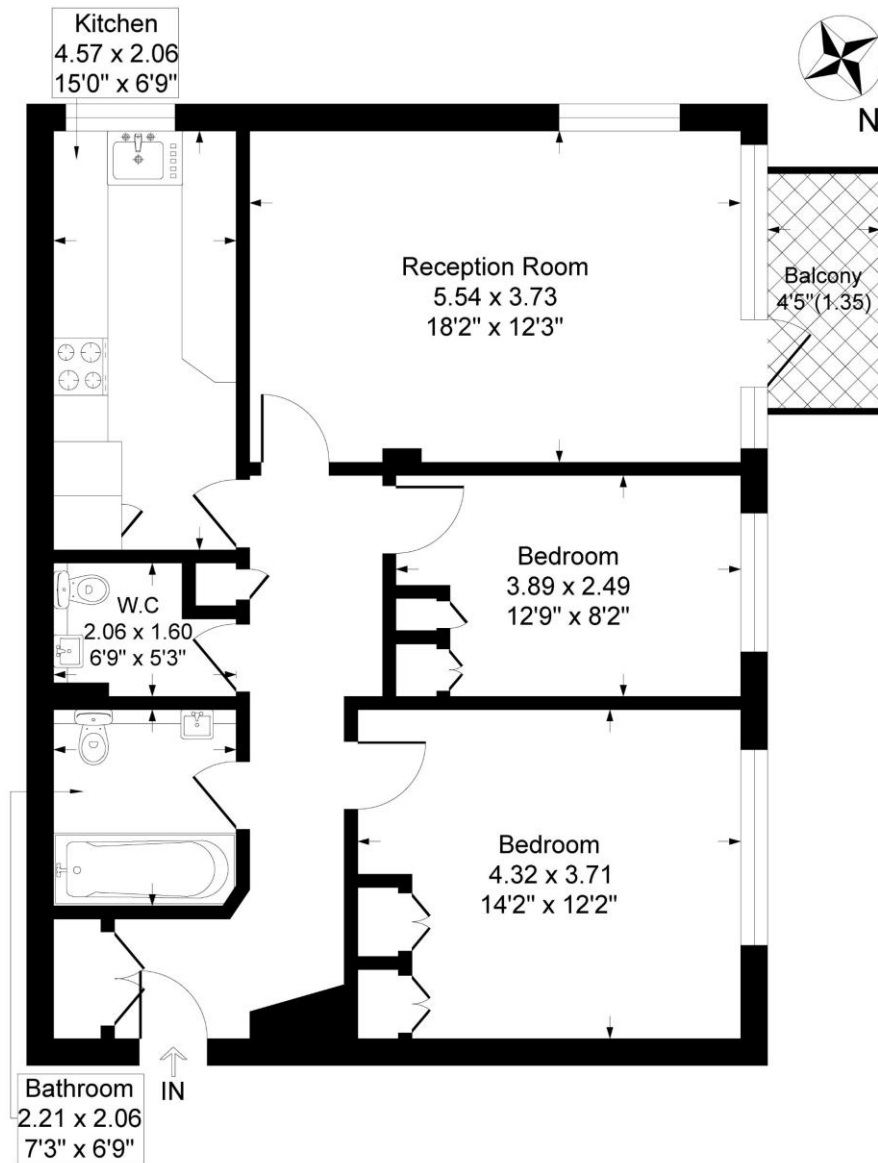
### *Chestertons Hampstead Lettings*

55-56 Hampstead High Street  
Hampstead  
London  
NW3 1QH  
hampsteadlettingsusers@chestertons.co.uk  
02077941125  
chestertons.co.uk

Additional tenant charges apply (fees apply to non-AST tenancies only)  
Tenancy Agreement Fee: £300  
References per Tenant/Guarantor: £60  
Inventory check (approx. £100 – £250 inc. VAT)  
chestertons.co.uk/property-to-rent/applicable-fees

# Byron Court, Fairfax Road, London, NW6

Approximate Gross Internal Floor Area = 79.2 sq m / 854 sq ft



## Fourth Floor

Illustration for identification purposes only, measurements are approximate, not to scale.

