



Fenton House, Delph Lane, Daresbury Warrington, Cheshire

Stunning Five Bedroom Home • Detached Property • The Perfect Family Home • Gorgeous Open Plan Living • Finished to a High Standard • Modern Interior Throughout • Three En-Suite Bathrooms • Large Integral Garage • Beautiful Private Garden • Ready To Move Into



Mark Antony
SALES & LETTING AGENTS



INTERIOR

Presenting a stunning five-bedroom detached home, this beautifully finished home offers spacious, modern living, ideal for family life.

Upon entering, you are welcomed by a stylish hallway leading into an impressive open-plan living area. The large family room is bathed in natural light from a striking skylight, creating a bright and airy atmosphere. At the heart of the home is a high-specification kitchen, complete with top-quality appliances, a generous breakfast bar, and sleek cabinetry, perfect for both everyday living and entertaining. Bi-fold doors seamlessly connect the living space to the garden, enhancing the sense of openness and flow throughout the ground floor.

Complementing this is a separate lounge, also benefitting from bi-fold doors opening onto the garden. From here, you can access a versatile study, which can be adapted to suit your needs. A convenient WC completes the ground floor.



The property also benefits from an underfloor wet heating system downstairs, ensuring comfort and efficiency year-round.

The first floor is home to four generously sized bedrooms, all finished to a high standard. Two bedrooms benefit from en-Suite bathrooms, offering added convenience and privacy. Bedroom two is particularly luxurious, featuring a dressing room, en-Suite, and Velux windows that flood the space with natural light. A modern family bathroom with a walk-in shower serves the remaining bedrooms.

The second floor is home to the principal bedroom, enhanced by Velux windows that create a light-filled and tranquil retreat. This spacious bedroom includes a dressing room or study area, along with a stylish en-Suite featuring both a bath and separate shower.

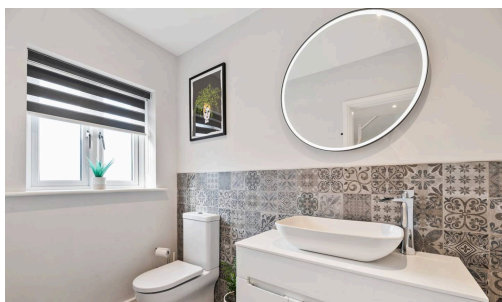


GARDEN

This exceptional home further benefits from a beautifully generous and private rear garden, seamlessly accessed via bi-fold doors from the main living areas. A pathway leads through the garden to an elegant pergola, creating a sheltered seating area, ideal for outdoor dining and entertaining during the warmer months.

In addition, the property features an integral garage, providing secure parking and ample storage, complete with a dedicated wash station.

To the front, a spacious driveway offers off-street parking for multiple vehicles.



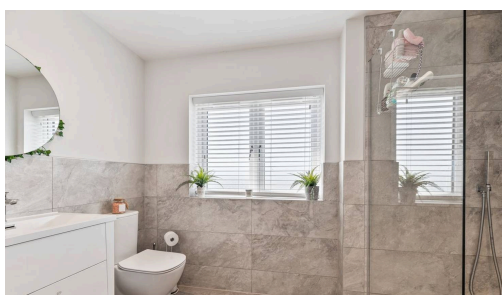
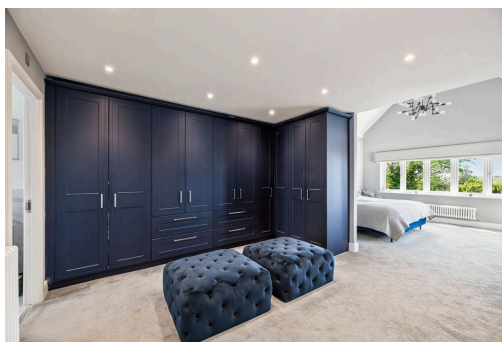
LOCATION

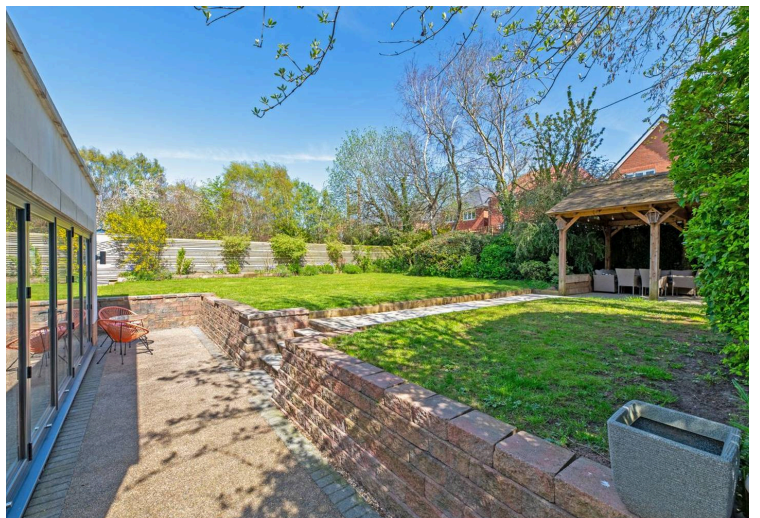
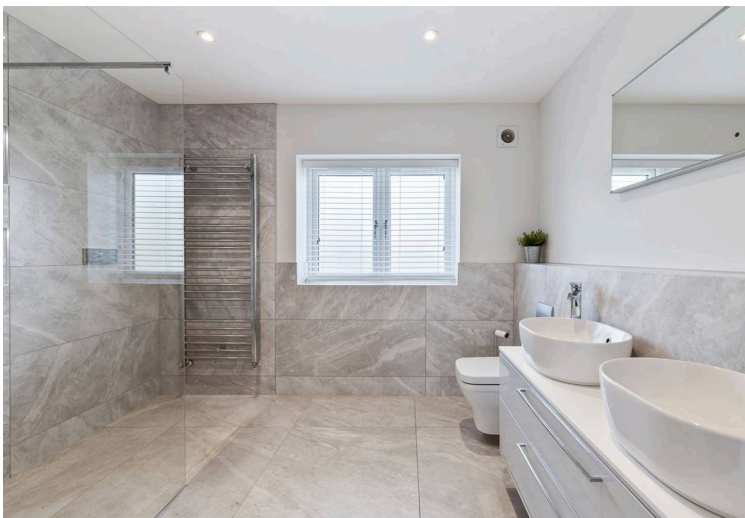
Although the postal area is Daresbury, the birthplace of Lewis Carroll, the property is closer to the village of Moore, where there is a local store and post office and plenty of walks to enjoy. It is also close to Stockton Heath which boasts an impressive selection of independent shops and boutiques and benefits from convenient amenities including good schools, a supermarket and post office. There is also a vast array of restaurants and bars, offering anything from a casual and relaxed setting to a more cosmopolitan night out.



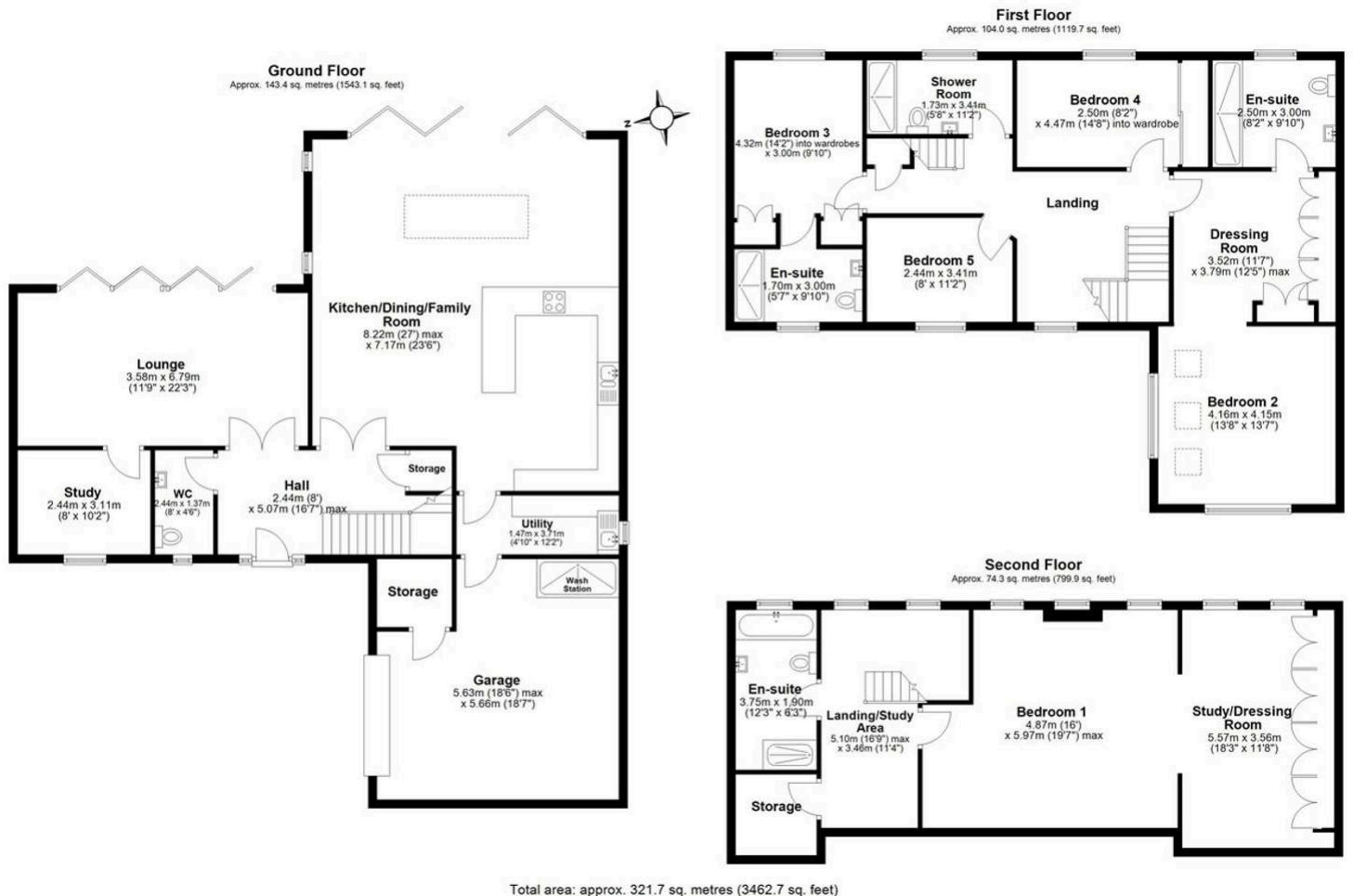
GENERAL INFORMATION

- Council Tax band: G
- Tenure: Freehold
- EPC Energy Efficiency Rating: B









VIEWING ARRANGEMENTS

Viewing is strictly by appointment only.
Please use Street or contact us to arrange a viewing.

CONTENTS, FIXTURES & FITTINGS

Not included in the asking price.
Items may be available under separate negotiation.