



Muswell Hill Road

London, N10

Guide Price £2,000,000

An opportunity to purchase a unique and truly wonderful five double bedroom Edwardian home awash with natural light. This fantastic property (in excess of 2,200 sq. Ft) is arranged over three floors and boasts a good layout and generously proportioned rooms throughout. It benefits from off street parking, a charming sunny terrace with stunning views across the rear woodland, high ceilings and an abundance of period features. It boasts original tiles and stained glass as well as contemporary accents such as elegant Dinesen flooring. A spacious, stylish kitchen has just been installed.

CHESTERTONS



Muswell Hill Road

London, N10

- Five bedrooms
- Two bathrooms plus WC
- Off-street parking
- Large reception plus snug area
- Wonderful views front and back
- In excess of 2200 sq. ft.
- Newly fitted kitchen



Muswell Hill Road, with access to Highgate Wood, connects Highgate tube to the multiple facilities of Muswell Hill Broadway including its selection of boutique shops, restaurants and cafes. Also in close proximity to both Highgate and Crouch End.

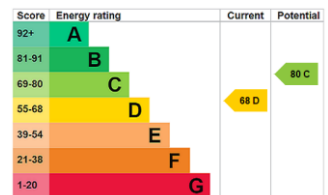
Tenure: Share of Freehold with 187 years remaining

Service Charge: Ad Hoc

Ground Rent: £0

Local Authority: Haringey

Council Tax Band: G



Chestertons Camden & Kentish Town Sales

99-101 Parkway

Camden

London

NW1 7PP

camden@chestertons.co.uk

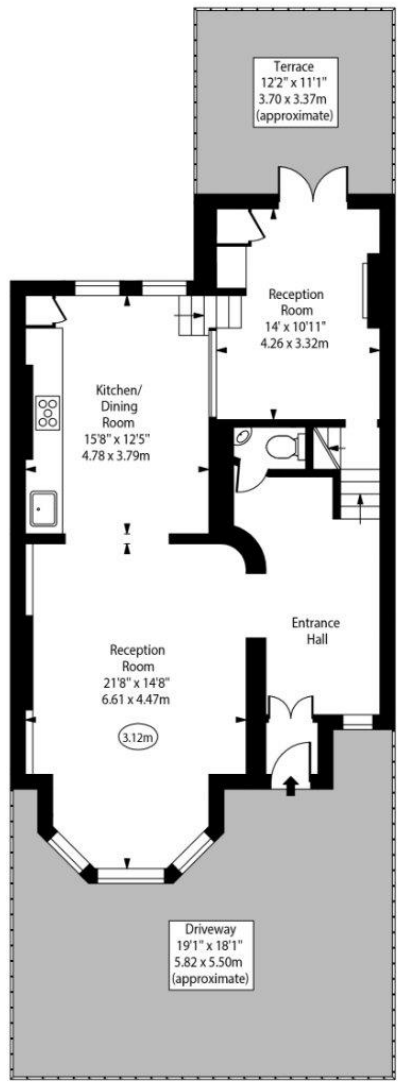
020 7267 2053

chestertons.co.uk

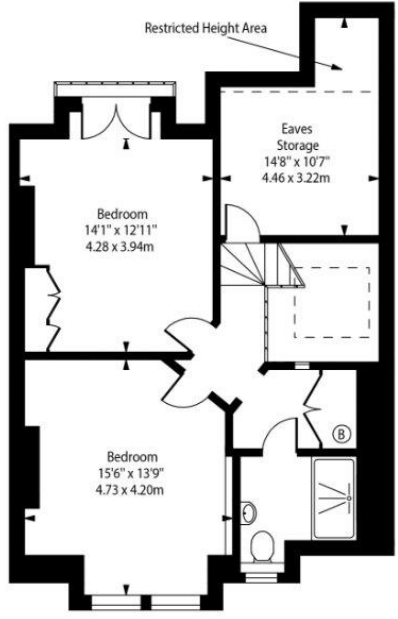
Muswell Hill Road



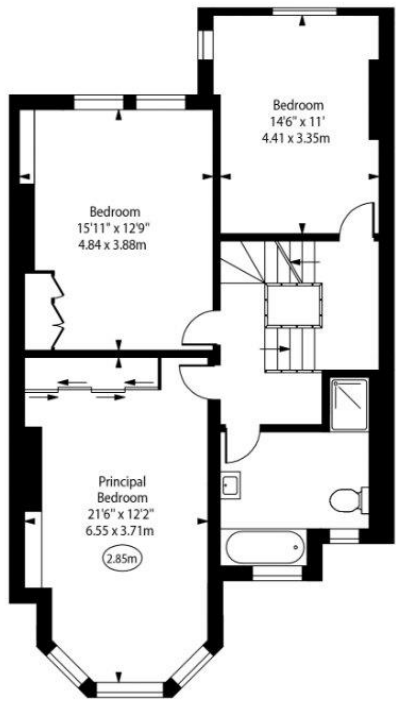
○ - Ceiling Height



Second Floor
Gross Internal Area - 848 Sq Ft - 78.78 Sq M



Second Floor
Gross Internal Area - 715 Sq Ft - 66.42 Sq M



First Floor
Gross Internal Area - 837 Sq Ft - 77.76 Sq M

Approx Gross Internal Area 2278 Sq Ft - 211.63 Sq M
Approx. Floor Area Including Restricted Heights 2400 Sq Ft - 222.96 Sq M
(Including Eaves Storage)

Every attempt has been made to ensure the accuracy of the floor plan shown. However, all measurements, fixtures, fittings, and data shown are approximate interpretations and for illustrative purposes only. Measured according to the RICS. Not To Scale.
www.goldlens.co.uk
Ref. No. 030387J

Chesterton UK Services Limited trading as Chestertons for themselves and for the vendor of this property whose agents they are, give notice that (i) these particulars do not constitute any part of an offer or contract, (ii) all statements contained within these particulars are made without responsibility on the part of Chestertons or the vendor, (iii) whilst made in good faith, none of the statements contained within these particulars are to be relied upon as a statement or representation of fact, (iv) any intending purchasers must satisfy themselves by inspection or otherwise as to the correctness of each of the statements contained within these particulars, (v) the vendor does not make or give either Chestertons or any person in their employment any authority to make or give representation or warranty whatsoever in relation to this property. Wide angle lenses may be used. ©Copyright Chestertons | Chesterton UK Services Limited | Registered Office 40 Connaught Street, Hyde Park, London W2 2AB Registered Company Number 05334580.

