



## Longford Road, TW2

### £610,000

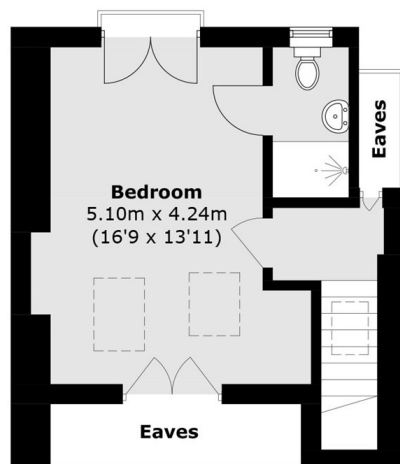
Located down a popular road is this bright and spacious four bedroom 1930's house which would be a wonderful family home as it benefits from having two bath / shower rooms, potential to extend and a large private back garden measuring approx 90' in length.

Longford Road is accessed off Hospital Bridge Road which leads from Twickenham through to Whitton and is close to the high street where you will find a vast array of shops and café's. There is also a fast link to Waterloo from the mainline station as well as having a number of excellent schools nearby.

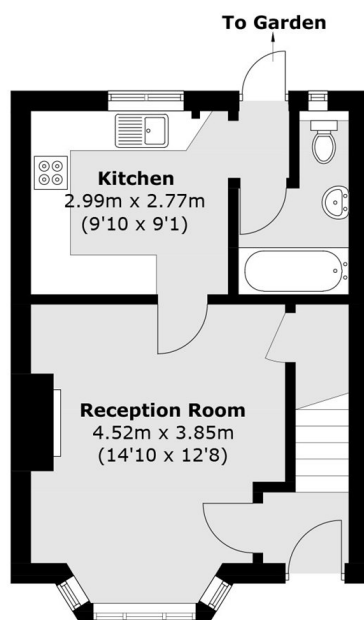
### Features

- Four Bedrooms
- Two Bath / Shower Rooms
- Good Condition
- Large Private Garden
- Popular Road
- Potential To Extend To The Rear

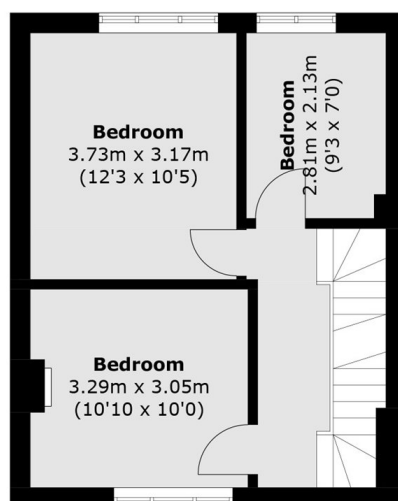
# Longford Road, Twickenham, TW2



**Second Floor**



**Ground Floor**



**First Floor**

Total area (approx.): 98.8 sq. m (1,063.5 sq. ft)  
(Excluding Eaves)