



CHARLES KNIGHT
ESTATE AGENTS



6 Crescent Road

, London, SE18 7BN

£700 Per month

Double Room Only - Shared House

We are pleased to offer this well-presented double room in a fully furnished 6-bedroom house share, located on Crescent Road, Woolwich, just a 10-minute walk from Woolwich Arsenal Station. Ideal for professionals or students.

Room Features:

- Spacious double room
- Fully furnished
- Shared bathroom
- Broadband included

Property Features:

- 6-bed house share
- Fully equipped communal kitchen
- Private garden
- All bills included

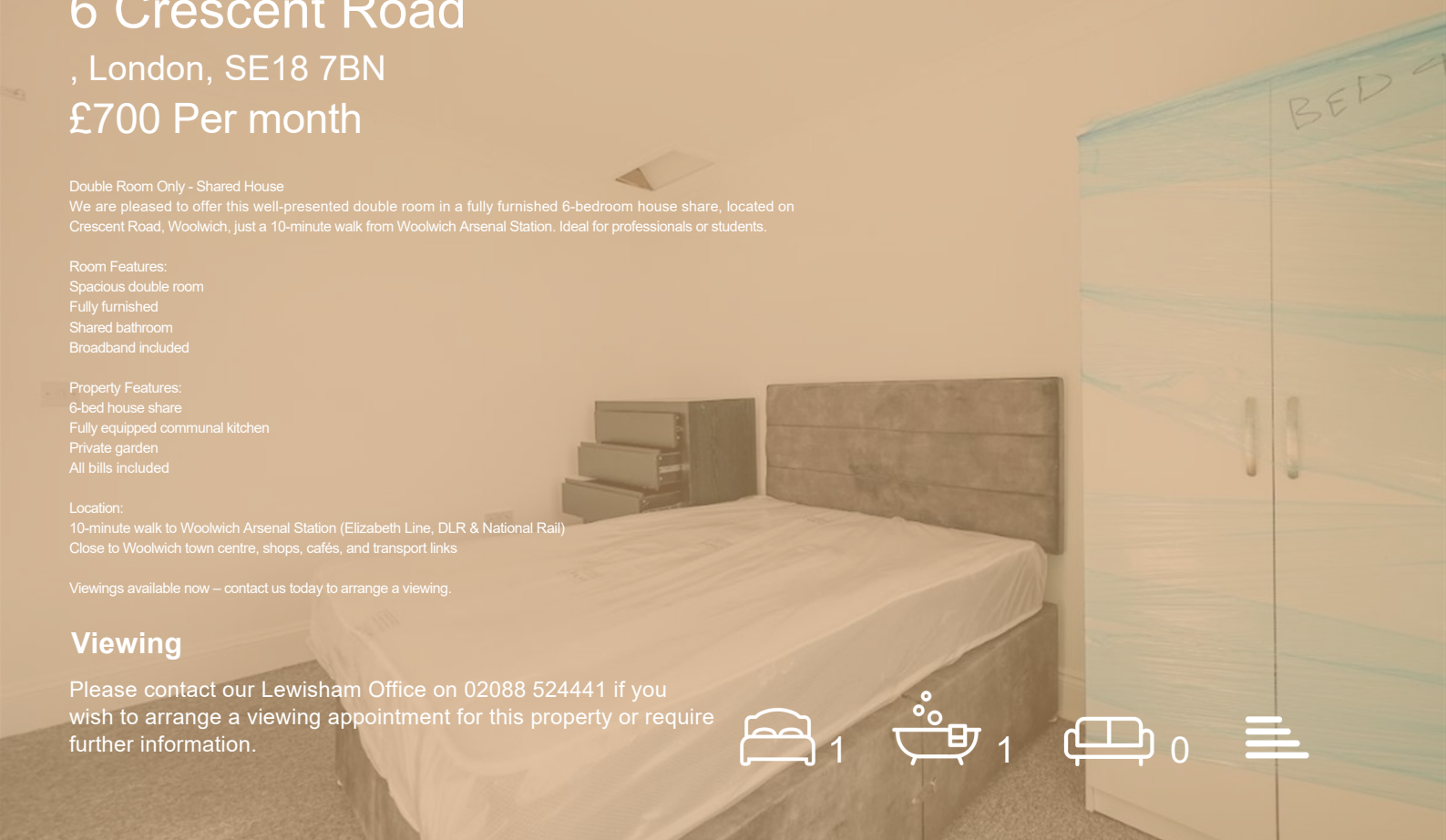
Location:

- 10-minute walk to Woolwich Arsenal Station (Elizabeth Line, DLR & National Rail)
- Close to Woolwich town centre, shops, cafés, and transport links

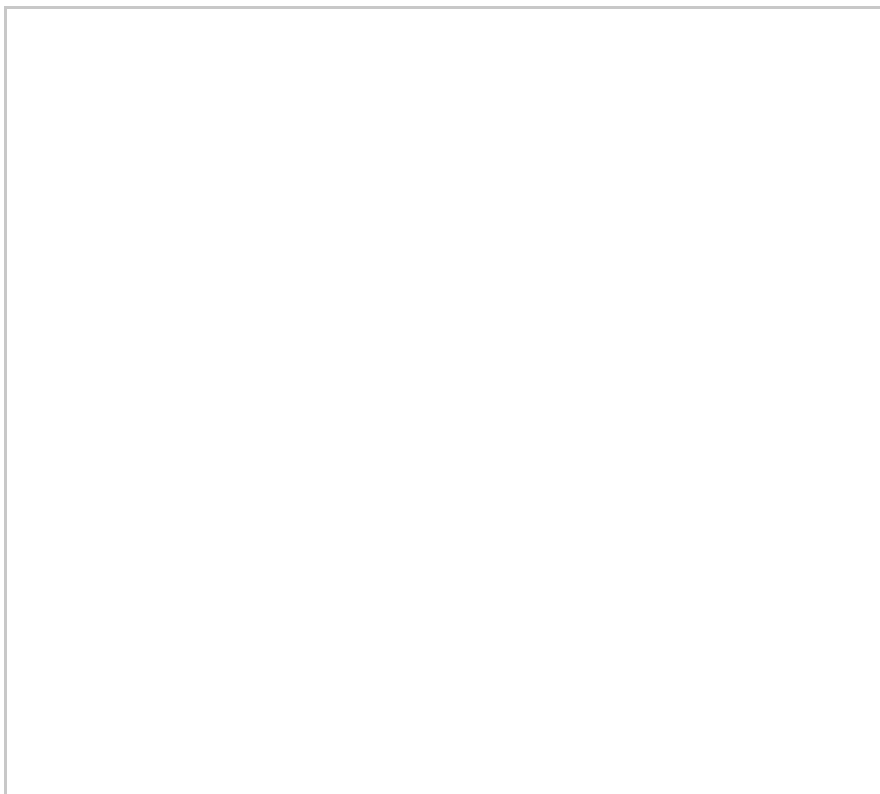
Viewings available now – contact us today to arrange a viewing.

Viewing

Please contact our Lewisham Office on 02088 524441 if you wish to arrange a viewing appointment for this property or require further information.



Floor Plan

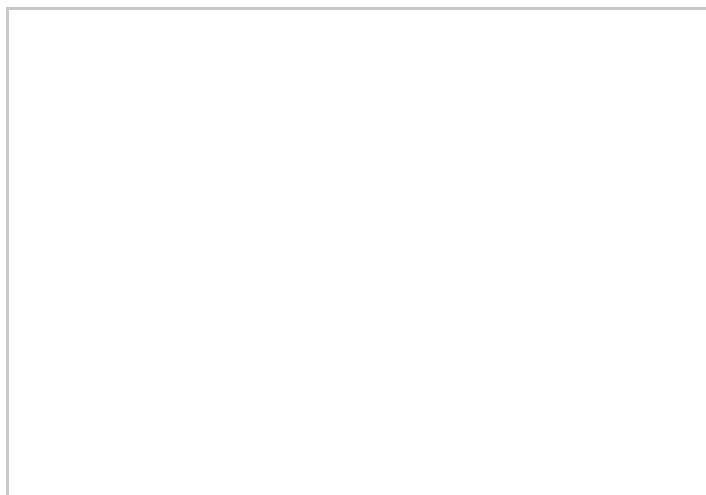
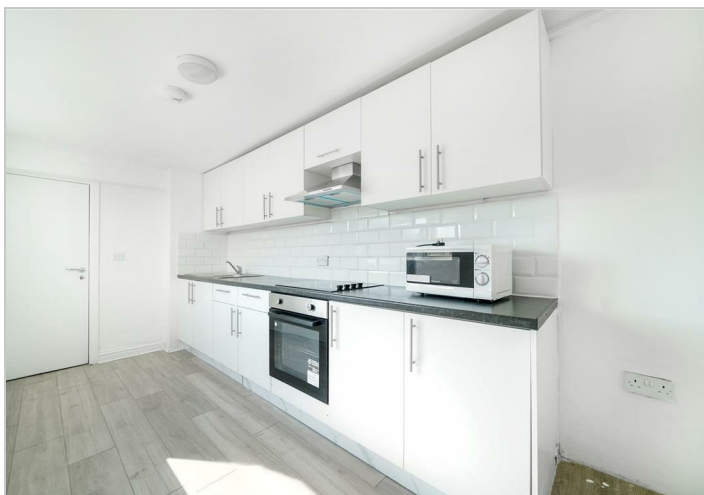


Area Map



Energy Efficiency Graph

Energy Efficiency Rating		Current	Potential
Very energy efficient - lower running costs			
(92 plus) A			
(81-91) B			
(69-80) C			
(55-68) D			
(39-54) E			
(21-38) F			
(1-20) G			
Not energy efficient - higher running costs			
England & Wales		EU Directive 2002/91/EC	



These particulars, whilst believed to be accurate are set out as a general outline only for guidance and do not constitute any part of an offer or contract. Intending purchasers should not rely on them as statements of representation of fact, but must satisfy themselves by inspection or otherwise as to their accuracy. No person in this firm's employment has the authority to make or give any representation or warranty in respect of the property.