



Rutland Gate, SW7

£1,695 Per week

A fantastic three bedroom flat to rent on the third floor of a portered building with a private balcony. The kitchen and living room are semi-open planned and leads to the private balcony.

There is easy access to a number of local supermarkets, shops, restaurants and cafes. Knightsbridge Underground Station is within walking distance and Hyde Park is on the doorstep.

Features

- Three Bedrooms
- Two Bathrooms
- Private Balcony
- Building With Porter
- Air Conditioning
- Third Floor With Lift



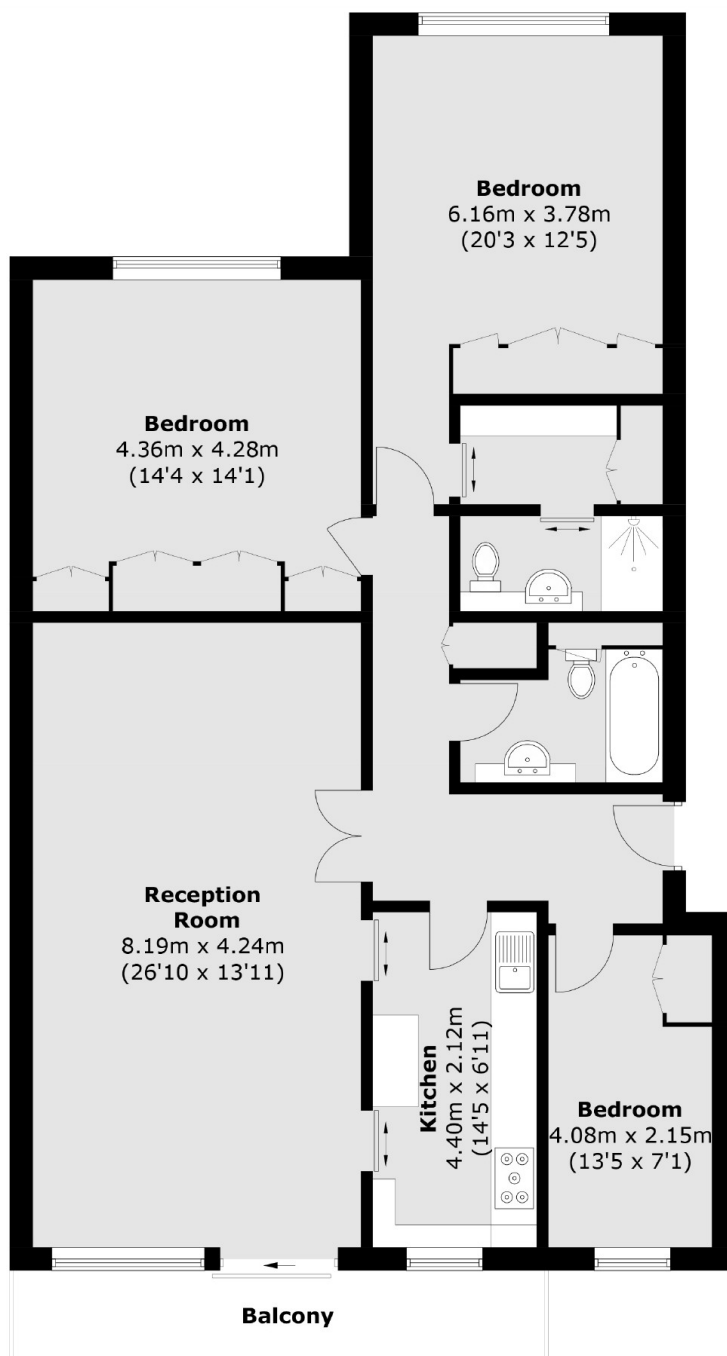
Rutland Gate, SW7

A lateral flat finished to a high standard throughout, with three double bedrooms, two bathrooms and an impressive living room overlooking the popular Rutland Gate.

The property has wood floors and air-conditioning throughout as well as a day porter and a lift in the building.



Rutland Gate, London, SW7



Third Floor

Total area (approx.): 120.0 sq. m (1,291.7 sq. ft)

Balcony area (approx.): 8.0 sq. m (86.1 sq. ft)