

Parkheath

Sold on Service

Haverstock Hill NW3

£2,950 PCM (£681 per week) - Camden Band E

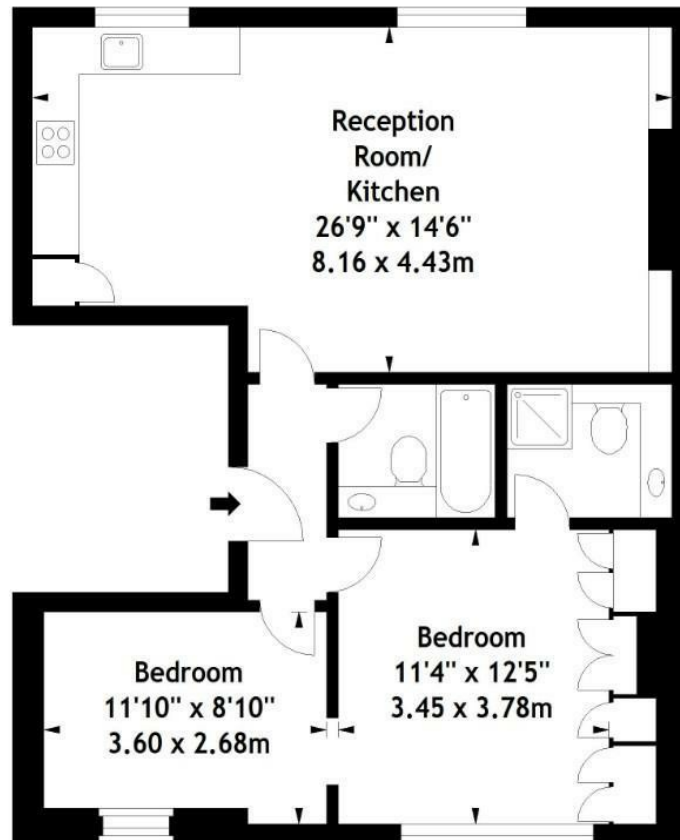


Fabulous 2 double bedroom apartment
Spacious wood floor reception
Main bedroom with en suite bathroom
3 piece bathroom
Ideally located for the areas amenities

Entire 1st floor in period conversion
Modern open plan kitchen with all appliances
Second double bedroom
Moments to Belsize Park underground
EPC: Rating C, Council Tax: band D

Belsize Park Office 020 7431 3104

Haverstock Hill, NW3
Approx. Gross Internal Area
757 Sq Ft - 70.33 Sq M



First Floor

Measured in accordance with RICS guidelines. Every attempt is made to ensure accuracy, however all measurements are approximate. This floor plan is for illustrative purposes only and is not to scale.

© Datography Ltd 2014

Photographs * Floorplans * Virtual Tours
Tel: 0845 643 4401 www.datography.com

The particulars do not constitute part of an offer or contract. The particulars, including text, photographs and plans, are for the guidance only of prospective purchasers/tenants and must not be relied upon as statements of fact. The descriptions provided therein represent the opinion of the author and whilst given in good faith should not be construed as statements of fact. Nothing in these particulars shall be deemed a statement that the property is in good condition or otherwise or that any services or facilities are in good working order. All measurements are approximate