



SIMPLE LIFE



SIMPLE LIFE



Hoy Drive, Newton-Le-Willows, WA12

£970 Per Month

Welcome to Simple Life's Earle Street, set in the western part of Newton-Le-Willows in the area of Earlestown.

The two double bedroom Alder is a spacious apartment perfect for city living. With an open plan kitchen/diner attached to a light and airy living room, it is the perfect space for entertaining guests. Benefiting from two bathrooms – one en-suite and another full bathroom suite – the apartment is great for friends sharing or couples who enjoy having a little extra room.

Complete with integrated kitchen appliances, including a washing machine, dishwasher and hob/oven, isn't it time for you to start living the Simple Life?

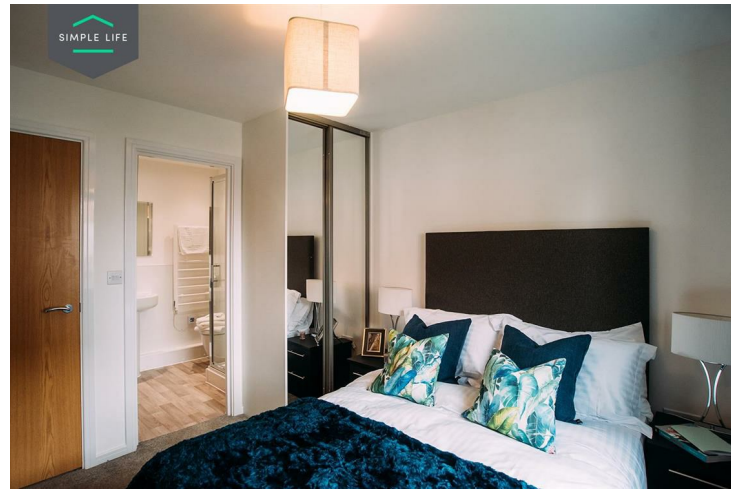
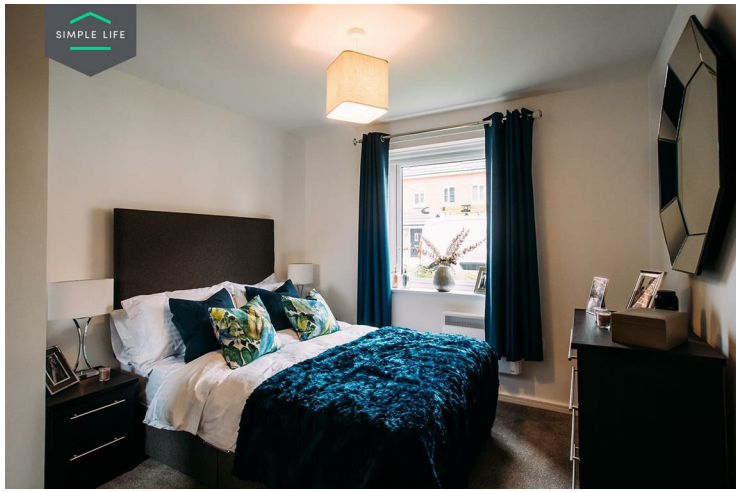
Historically the Earlestown area owes its existence to the Liverpool and Manchester Railway, which to this day offers its people easy access to city centres. From the development, Earlestown train station is just a 15 minute walk, offering direct services to Liverpool, Chester, Warrington and Manchester. If travelling by car, the M6 is only 4 miles away.

The area has a small, yet busy town centre with an array of good local amenities, including a large Tesco superstore, a medical centre, post office, local market and other popular high street shops, pubs and restaurants. Sankey Valley Park is situated only 2 miles away from the development – the perfect peaceful setting for an afternoon stroll.

To visit the development, please use postcode WA12 9XD in your Satnav, and look for where Earle Street meets Sankey Street.

Deposit: £1110
Holding Deposit: £220
Council Tax: B
Unfurnished
Available: 29th June 2026





Key Features

- Private driveway
- Fitted wardrobes to master bedroom
- Fridge freezer
- Light wash wood effect flooring
- Light wood or white interior doors
- Security alarm system
- Dishwasher
- Washing/drying machine
- Dark ash style worktops

Location

