



Plough Lane, Newborough Peterborough  
Offers in Excess of £370,000 **Freehold**

**Sharman  
Quinney**

# Key Features



- Well presented family home
- Corner plot rear garden
- Double garage and double drive
- En-suite shower rooms
- Downstairs cloakroom
- Extended family room
- Enclosed rear garden
- Study

This impressive four bedroom detached home enjoys a prominent corner plot position within a sought after village, offering generous living space for comfortable family living, the property features four well proportioned bedrooms, including a spacious master complete with its own ensuite.

The ground floor provides versatile accommodation with bright, welcoming rooms. The modern kitchen and family room open onto the enclosed rear garden, the family room benefits from underfloor heating and vaulted ceiling, the ground floor also features a cloakroom and study.



Outside, the home benefits from a double garage and ample driveway for parking, perfect for families with multiple vehicles or those needing additional storage. Situated within a friendly village community, the property provides a blend of peace, practicality, and easy access to local amenities, making it an exceptional opportunity for anyone seeking a spacious and well located family home.

For measurements please see floor plan.

Porch

Entrance Hall

Cloakroom

Lounge

Dining Room

Kitchen/diner

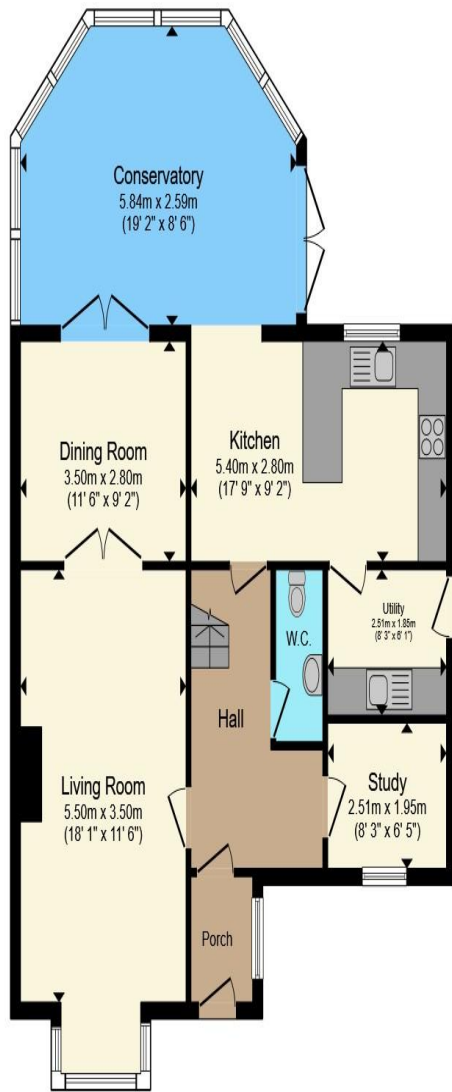
Family Sunroom

Utility Room

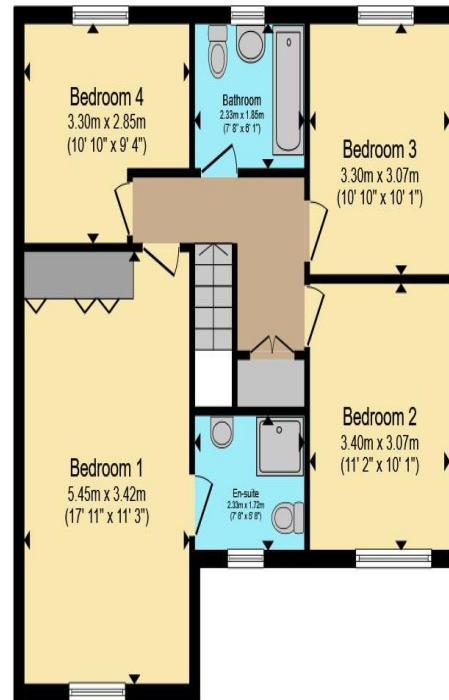
Study

Landing





**Ground Floor**



**First Floor**

Total floor area 157.5 m<sup>2</sup> (1,695 sq.ft.) approx

This floor plan is for illustrative purposes only. It is not drawn to scale. Any measurements, floor areas (including any total floor area), openings and orientation are approximate. No details are guaranteed, they cannot be relied upon for any purpose and they do not form part of any agreement. No liability is taken for any error, omission or misstatement. A party must rely upon its own inspection(s). Powered by [www.propertybox.io](http://www.propertybox.io)

**Sharman  
Quinney**

Master Bedroom

En-Suite Shower Room

Bedroom Two

Bedroom Three

Bedroom Four

Family Bathroom

To view this property call Sharman Quinney on:  
**01733 575757**

# Selling your property?

Contact us to arrange a **FREE** home valuation.

 01733 575757

 Loxley Centre, Werrington, Peterborough,  
Cambridgeshire, PE4 5BW

 [werrington@sharmanquinney.co.uk](mailto:werrington@sharmanquinney.co.uk)

 [www.sharmanquinney.co.uk](http://www.sharmanquinney.co.uk)



 SCAN ME



Sharman Quinney Holdings Limited is registered in England and Wales under company number 4174227, Registered Office is Cumbria House, 16-20 Hockliffe Street, Leighton Buzzard, Bedfordshire, LU7 1GN. VAT Registration Number is 500 2481 05.

1: These particulars do not constitute part or all of an offer or contract. 2: The measurements indicated are supplied for guidance only and as such must be considered incorrect. 3: Potential buyers are advised to recheck the measurements before committing to any expense. 4: Sharman Quinney has not tested any apparatus, equipment, fixtures, fittings or services and it is the buyers interests to check the working condition of any appliances. 5: Sharman Quinney has not sought to verify the legal title of the property and buyers must obtain verification from their legal representative. 6: Intending purchasers will be asked to produce identification documentation at a later stage and we would ask your co-operation in order that there will be no delay in agreeing the sale. Ref: WER205081 - 0006

