



Camley Street

Kings Cross, N1C

£6,350 per month
(£1,465.38 per week)

A selection of three double bedroom apartments situated within this incredible modern development. The properties comprise; open plan reception room, three double bedrooms and two bathroom.



Camley Street

Kings Cross, N1C

- Selection Of Three Bedroom Flats
- Residents Lounge & Roof Terrace
- Residents Gym
- Pet Friendly (With Spa)
- Fully Furnished
- Wi-Fi Included
- Moments From Granary Square



A selection of three double bedroom apartments situated within this incredible modern development. The property comprises; open plan reception room, three double bedrooms and two bathroom.

The ultra modern apartments further benefits; balcony, wooden flooring, underfloor heating, modern fixtures and fittings and floor to ceiling windows.

The development benefits; on-site management team, concierge, lift, private roof terrace, sky lounge, meeting rooms, work from home space, dog grooming parlour, bicycle storage and high-tech gymnasium.

Minimum Term: months
Deposit Required: £7,326.92
Local Authority:
Council Tax Band: G
EPC Rating: B
Furnished

Energy Efficiency Rating		Current	Potential
Very energy efficient - lower running costs	A		
(92-100)	B	86	86
(81-91)	C		
(69-80)	D		
(55-68)	E		
(39-54)	F		
(21-38)	G		
Not energy efficient - higher running costs			
England, Scotland & Wales		EU Directive 2002/91/EC	

Chestertons Camden & Primrose Hill Lettings

99-101 Parkway
 London
 NW1 7PP
 camden@chestertons.co.uk
 02072673574
 chestertons.co.uk

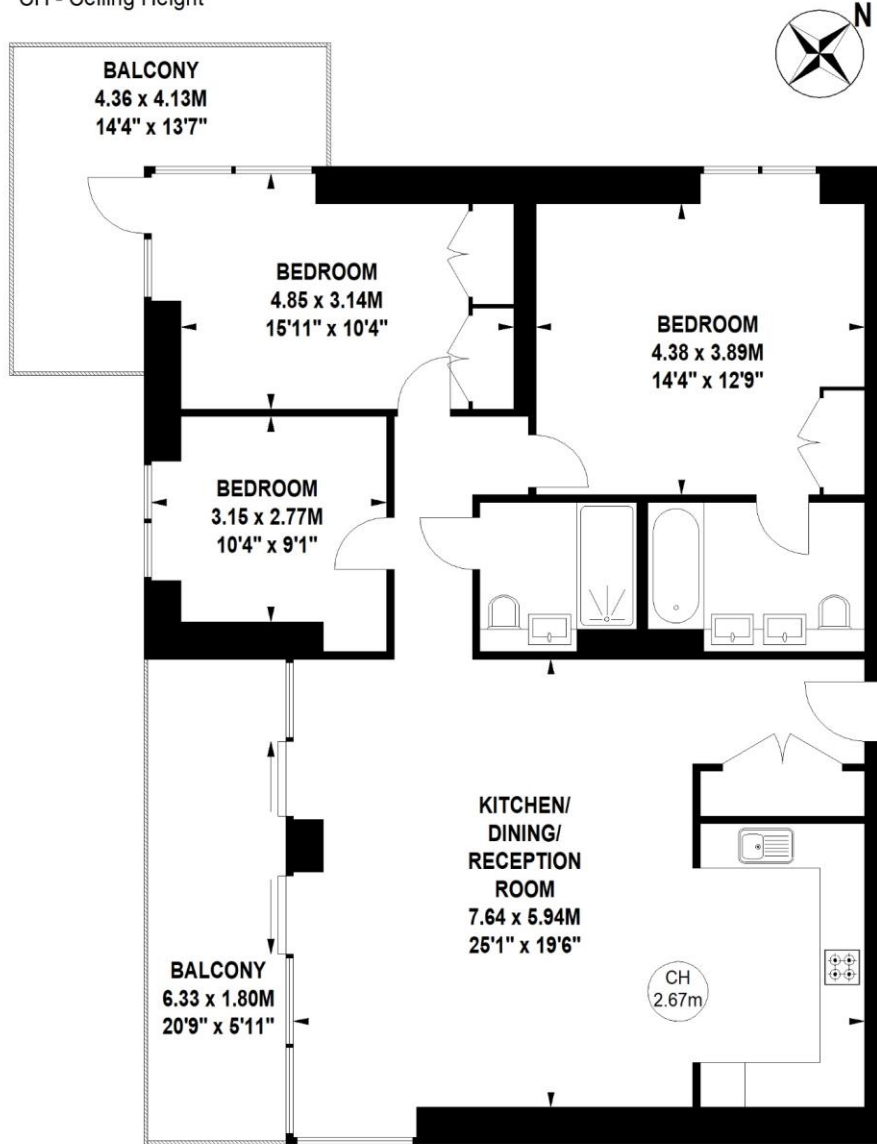
Additional tenant charges apply (fees apply to non-AST tenancies only)
 Tenancy Agreement Fee: £300
 References per Tenant/Guarantor: £60
 Inventory check (approx. £100 – £250 inc. VAT)
 chestertons.co.uk/property-to-rent/applicable-fees

Enclave Kings Cross, Camley Street, N1

Approximate gross internal area

103.86 sq m / 1118 sq ft

Key :
CH - Ceiling Height



Ninth Floor

**Not to scale, for guidance only and must not be relied upon as a statement of fact.
All measurements and areas are approximate only**

