



SHROTON STREET, NW1

£1,000,000

Three bedrooms
Three bathrooms
Immaculate condition
Private patio
Long lease
Marylebone station

@marshandparsons
marshandparsons.co.uk

MARSH &
PARSONS



ABOUT THE PROPERTY

An immaculate garden flat featuring three bedrooms and three bathrooms with guest w/c as well as a fully integrated kitchen with Miele appliances and a large reception room leading on to a private patio. The property further benefitting from its own private entrance, excellent ceiling height throughout, long lease and additional demised storage space.

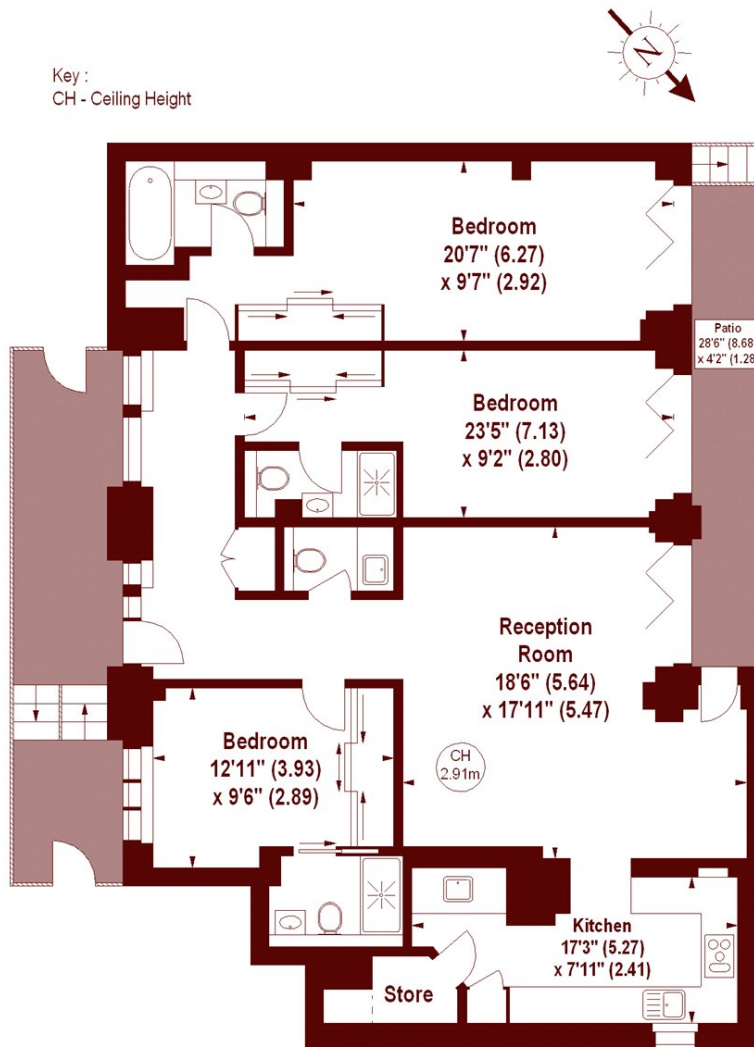
Located in the heart of Marylebone, Shroton Street benefits from its central position in London, providing easy access to major business, cultural, and shopping areas. Residents are within close proximity of key transport hubs such as Marylebone Station and Baker Street Station, which offer Underground and national rail.



STEP INSIDE SHROTON STREET

Shroton Street, NW1

APPROX. GROSS INTERNAL FLOOR AREA 1307 SQFT / 121.42 SQM



LOWER GROUND FLOOR

The floor plan is not to scale and measurements and areas shown are approximate and therefore should be used for illustrative purposes only. The plan has been prepared in accordance with the RICS code of Measuring Practice and whilst we have confidence in the information produced, it must not be relied on. If there is any aspect of particular importance, you should carry out or commission your own inspection of the property.
Copyright of FeaturePRO.

Marylebone & Mayfair
020 7935 1775

Energy Rating: C We aim to make our particulars both accurate and reliable. However, they are not guaranteed; nor do they form part of an offer or contract. If you require clarification on any points then please contact us, especially if you're traveling some distance to view. Please note that appliances and heating systems have not been tested and therefore no warranties can be given as to their good working order

MARSH &
PARSONS