

# FLETCHERS

ESTATE AGENTS



## Silver Crescent, W4

£650,000

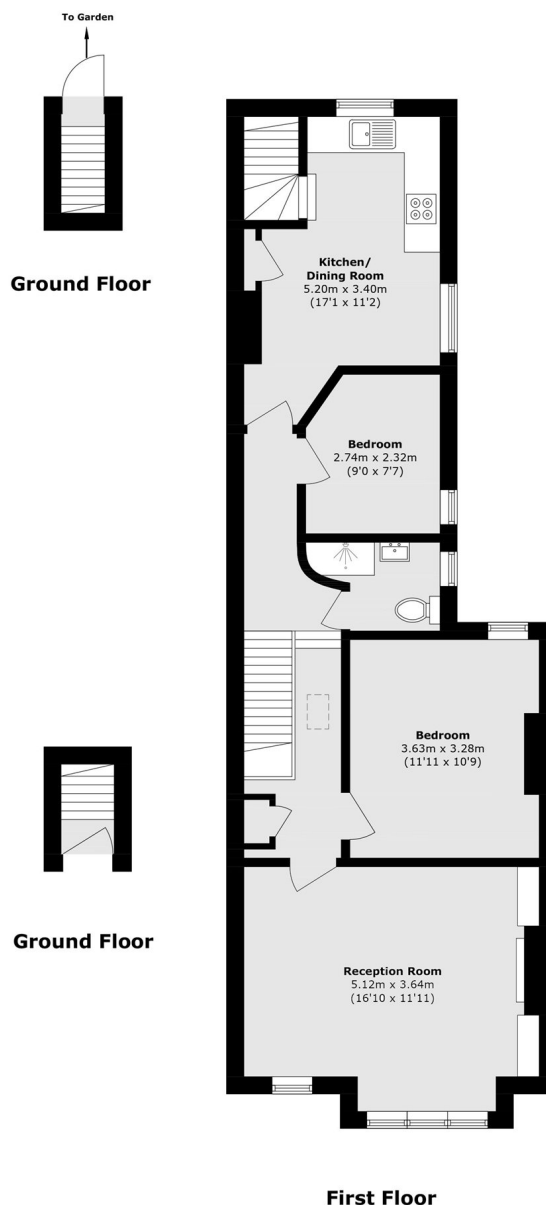
A unique opportunity to purchase a spacious two bedroom share of freehold flat with planning permission to extend into the loft. The property also benefits from a private garden with direct access from the kitchen. This is the perfect opportunity for someone looking for a large space, close to transport and the high street.

Silver Crescent is a quiet tree-lined residential road, with all of the boutiques, cafés and restaurants of Chiswick High Road on the doorstep. The property's location provides easy access in and out of London via the A4/M4, with Gunnersbury Tube Station (district and overground) being only 300 meters away.

• Two Bedrooms • Potential To Extend (Planning Permission In Place) • Spacious Footprint • Share Of Freehold • Private Garden •

# FLETCHERS

## ESTATE AGENTS



Total area (approx.): 73.8 sq. m (794.3 sq. ft)

Fletchers Chiswick Turnham Green Sales  
58 Turnham Green Terrace, London, W4 1QP  
020 8987 3000  
[chiswicksales@fletcherestates.com](mailto:chiswicksales@fletcherestates.com)

Energy Rating: D. We aim to make our particulars both accurate and reliable. However they are not guaranteed; nor do they form part of an offer or contract. If you require clarification on any points then please contact us, especially if you're traveling some distance to view. Please note that appliances and heating systems have not been tested and therefore no warranties can be given as to their good working order.