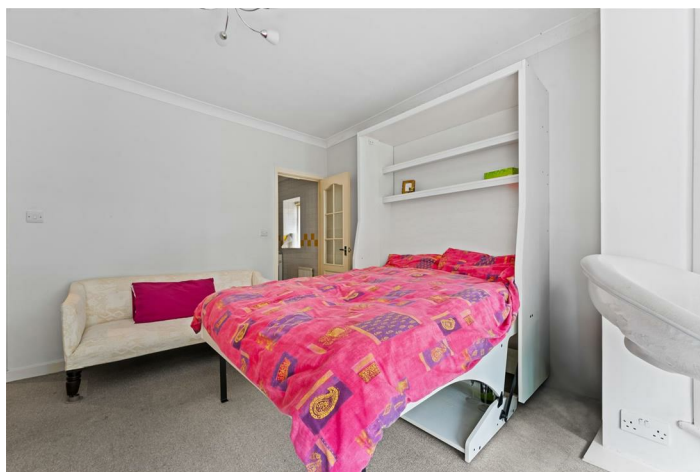


LEASEHOLD



Studio (EPC Rating: C)

**WORPLE ROAD LONDON SW19 4HZ**

Auction Guide

**£181,000**



# 1 Bedroom Studio located in London

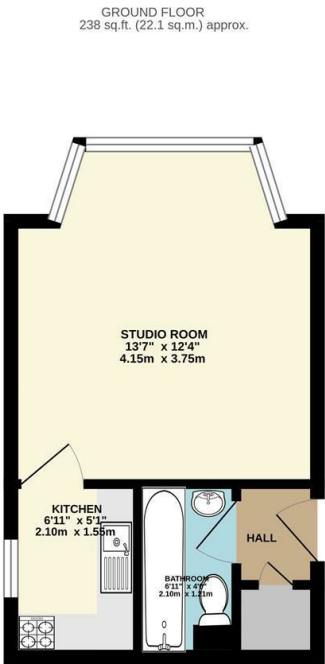
Saxon Kings are delighted to bring this well presented studio apartment to Auction.

Located just a short walk from Wimbledon train and tube station, this a great opportunity for an investor or first time buyer looking for easy access to a choice of excellent local shopping, restaurants, theatres, bars and leisure facilities. This raised ground floor studio is situated in an impressive brick building and benefits from communal gardens to the rear of the property. Further benefits include no onward chain and gas central heating.

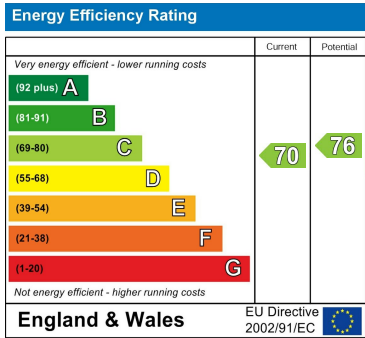
Contact Saxon Kings for viewings or more information.

For Sale via Bamboo Auctions - <https://saxonkings.bambooauctions.com/property/worple-road-london-8565072>

Auction ends 4th March 2026 at 2pm.



Council Tax Band  
**B**  
Energy Performance Graph



Call us on  
**020 8546 7771**  
**info@saxonkings.co.uk**  
**www.saxonkings.co.uk**

Agents Note: Whilst every care has been taken to prepare these particulars, they are for guidance purposes only. All measurements are approximate and are for general guidance purposes only and whilst every care has been taken to ensure their accuracy, they should not be relied upon and potential buyers are advised to recheck the measurements.

