



Streatham High Road, SW16

£400,000

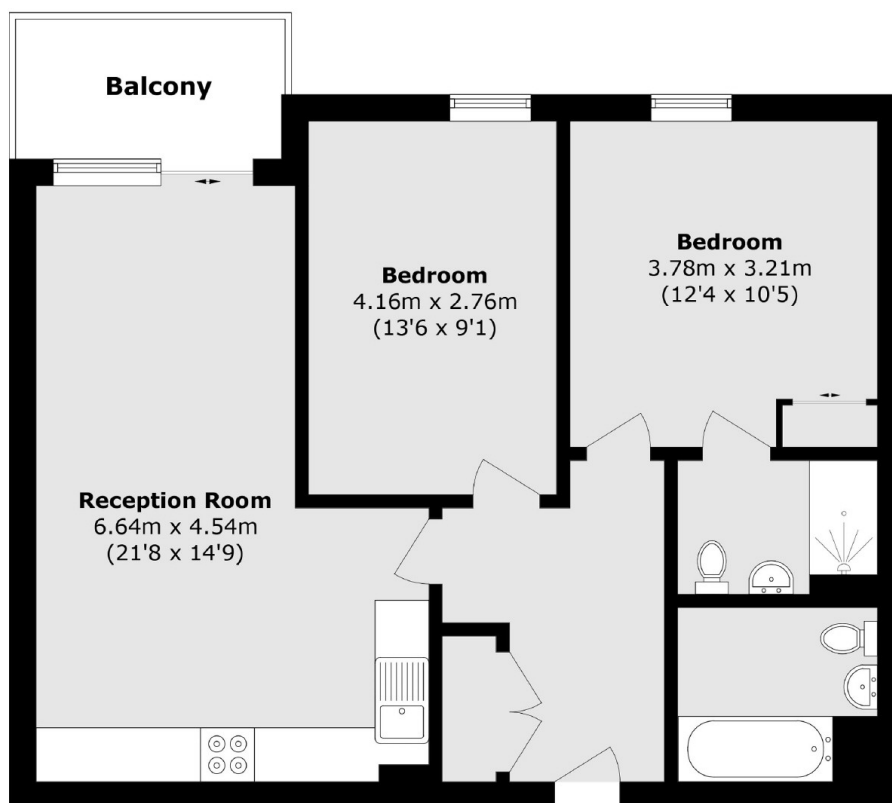
Offers Over - At over 700 sq ft, this bright and spacious two double bedroom apartment is filled with natural light and offers comfortable, modern living throughout. It features two bathrooms and a well-designed open-plan kitchen and living area, which opens out onto a private balcony the perfect place to unwind and enjoy the sunshine. Set within a well-maintained development, residents benefit from a communal courtyard and concierge service. It is also being offered to the market with no onward chain.

Derry Court is conveniently located near Streatham Mainline Train Station, offering excellent access into the City. All essential amenities are within easy reach, including several large supermarkets, a gym, and a leisure centre. Streatham High Road is just a short walk away and features a wide variety of restaurants, shops, and other local conveniences.

Features

- Two Double Bedrooms
- Communal Gardens
- Convenient Location
- Two Bathrooms
- Open Plan Kitchen
- No Onward Chain

Streatham High Road, London, SW16



Total area (approx.): 66.7 sq. m (717.9 sq. ft)

Balcony area (approx.): 4.7 sq. m (51.3 sq. ft)