

Frank Harris & Co.



Moorgate, EC1Y

£920 Per week

A three double bedroom apartment located at One Lamb's Passage, offered furnished or unfurnished and available immediately. The cladding is being replaced and there is currently scaffolding surrounding the building.

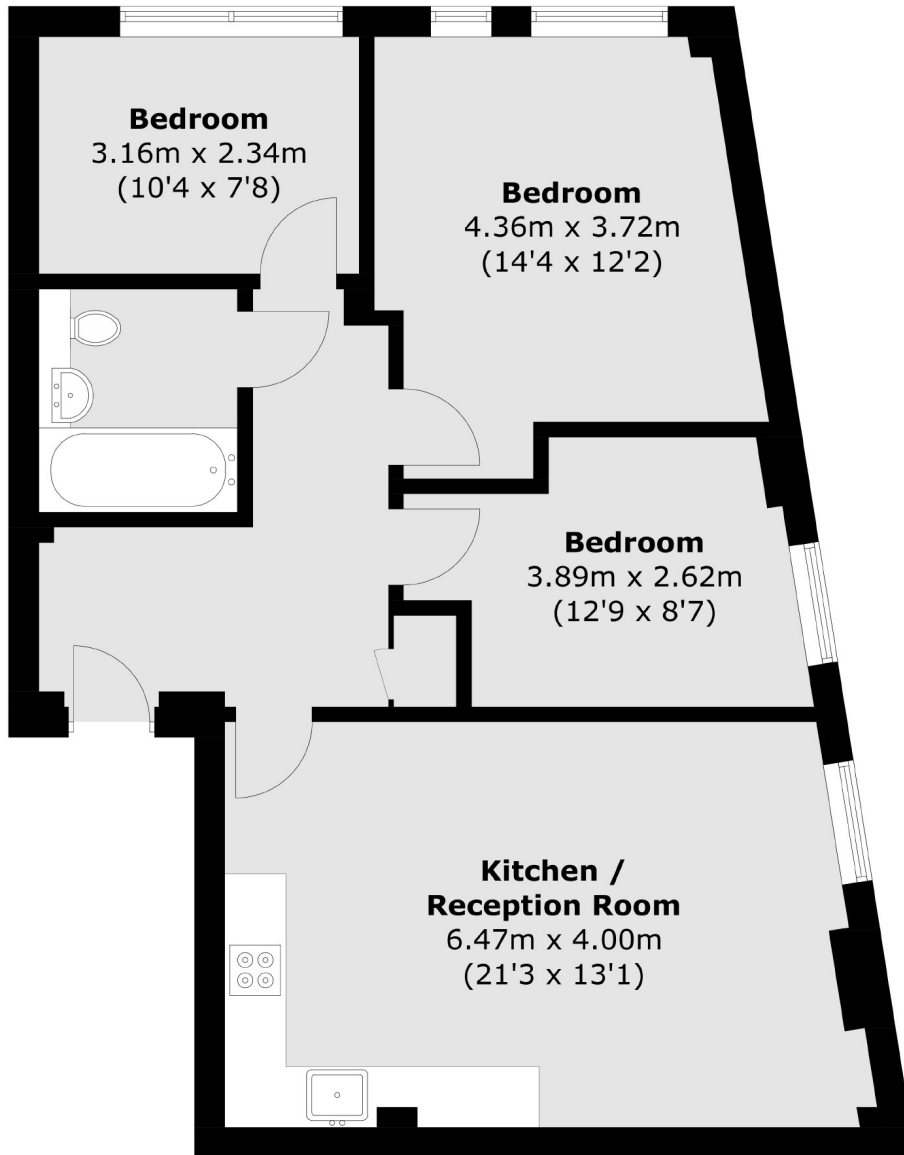


One Lamb's Passage is located about a quarter mile from Barbican, Old Street and Moorgate Underground stations, offering direct access to the Elizabeth Line as well as the Northern, Circle, Hammersmith & City and Metropolitan lines.

- Three Double Bedrooms • Open Plan Living • Modern Development •
- Daytime Concierge • Furnished / Unfurnished • Available Immediately •



Frank Harris & Co.



Total area (approx.): 72.7 sq. m (782.5 sq. ft)

Frank Harris & Co. Barbican and City
87 Long Lane, London,
EC1A 9ET
020 7601 1919
citylettings@frankharris.co.uk

Energy Rating: . We aim to make our particulars both accurate and reliable. However they are not guaranteed; nor do they form part of an offer or contract. If you require clarification on any points then please contact us, especially if you're traveling some distance to view. Please note that appliances and heating systems have not been tested and therefore no warranties can be given as to their good working order.

