



smarthomes

Waterside Heights

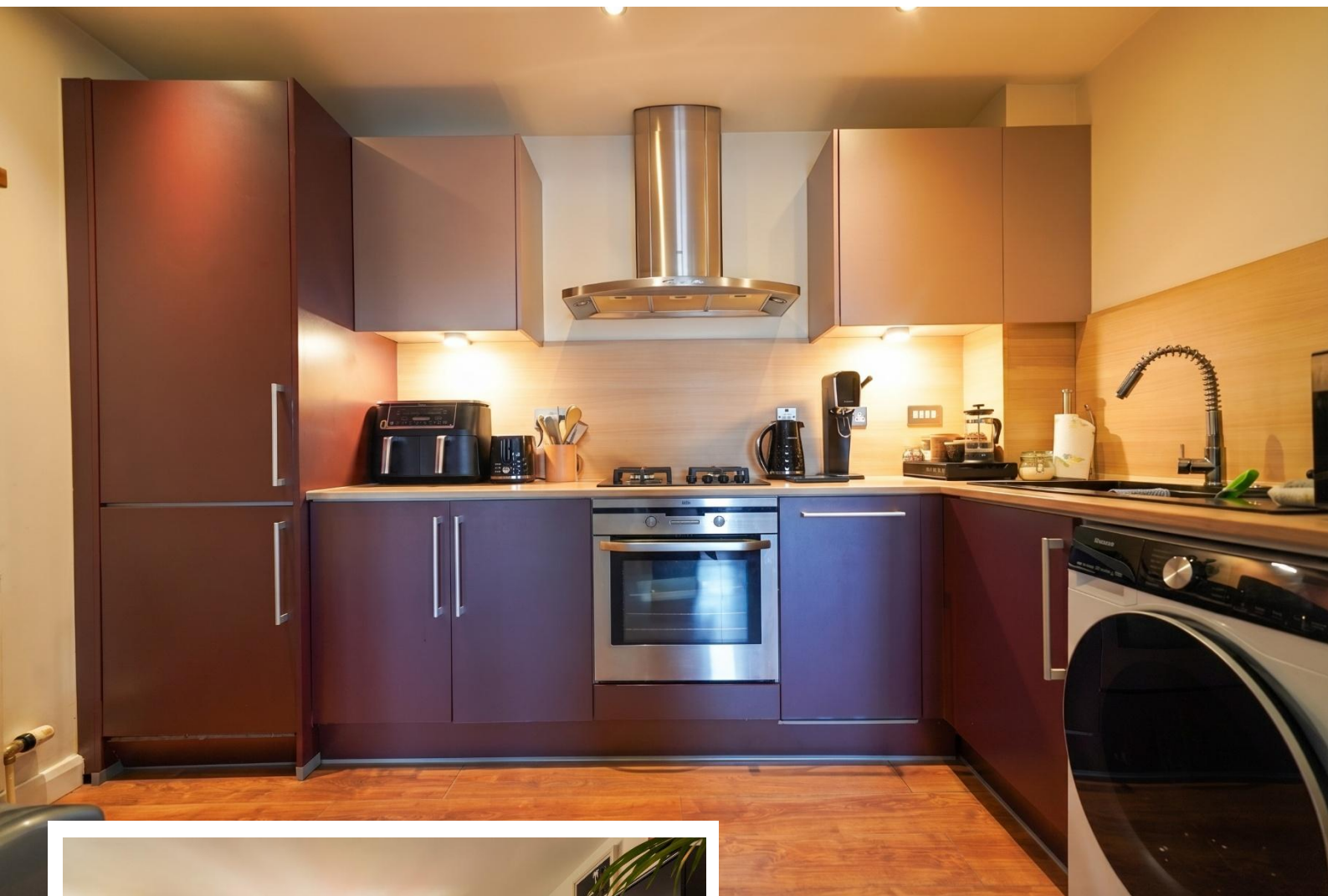
Dickens Heath, Solihull

- A Very Well Presented & Spacious Second Floor Apartment
- Two Double Bedrooms
- Open Plan Lounge Kitchen/Diner
- En Suite Shower Room & Family Bathroom

£210,000

Current EPC Rating 79 (C)
Current Council Tax Band C

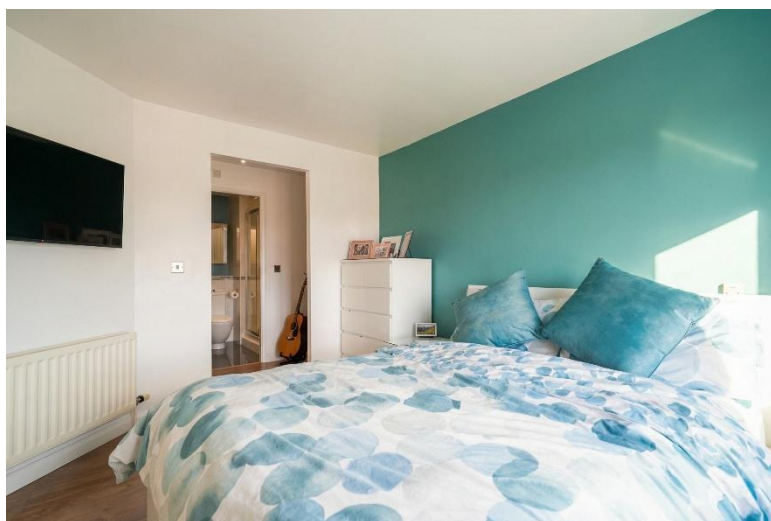




Property Description

A very well presented and spacious second floor apartment offering two double bedrooms, open plan lounge kitchen/diner, en suite shower room, family bathroom and allocated under-ground parking space

Dickens Heath village offers a contemporary life style with a superb range of family homes and apartments, restaurants, offices, shops, medical surgeries as well as a local library, village hall and village green to provide that community lifestyle. Set within easy access to the M42 and train stations the village is ideal for families and commuters.



Rooms & Measurements

Entrance Hall

Lounge Diner - 4.7m x 6.0m

Modern Kitchen - 3.3m x 1.9m

Bedroom One to Rear - 4.8m x 2.9 (to wardrobes)

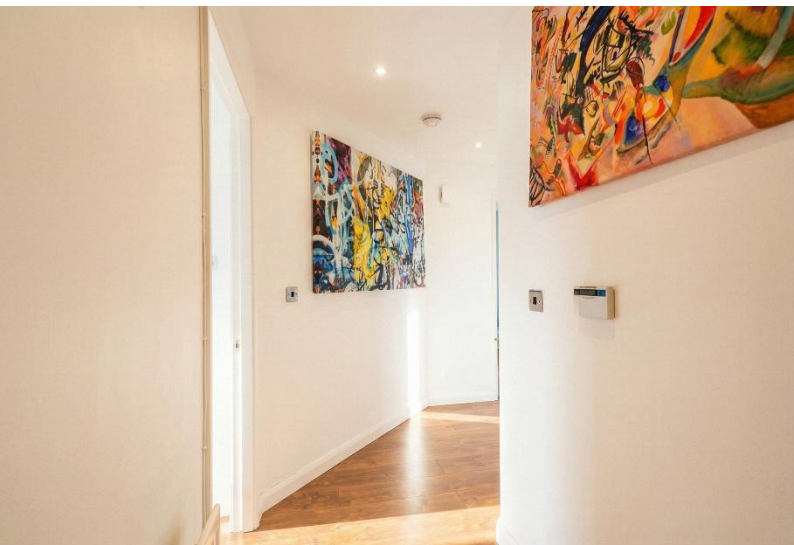
En Suite Shower Room

Bedroom Two to Rear - 3.7m x 2.3m

Family Bathroom - 2.2m x 1.8m

Tenure

We are advised by the vendor that the property is leasehold with approx. 975 years remaining on the lease, a service charge of approx. £2,436 per annum and a ground rent of approx. £200 per annum. We would advise all interested parties to obtain verification through their own solicitor or legal representative. EPC supplied by Vendor. Current council tax band – C



316 Stratford Road
Shirley
Solihull
B90 3DN

www.smart-homes.co.uk
0121 744 4144

Agents Note: Whilst every care has been taken to prepare these particulars, they are for guidance purposes only. We believe all information to be correct from the day of marketing however, we advise and recommend that your conveyancer and or surveyor verifies all information supplied. All measurements are approximate are for general guidance purposes only and whilst every care has been taken to ensure their accuracy, they should not be relied upon and potential buyers are advised to recheck the measurements.