



West Hampstead Mews | West Hampstead | London | NW6

Asking Price - £1,300,000

 **DRAPER**
LONDON

- Freehold mews house
- Two bedrooms
- Two bathrooms
- Large private roof terrace
- Private patio
- On street parking
- Separate W/C

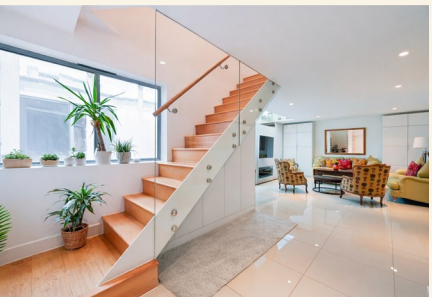
An exceptionally wide freehold mews house with a spectacular private roof terrace, quietly positioned within the highly sought after, West Hampstead.

Extending to 1069 sq ft, this is a rare example of a laterally generous mews house, offering remarkable proportions and an abundance of natural light throughout.

The ground floor is particularly impressive due to the width of the house. The accommodation is arranged side by side rather than front to back, creating a sense of space rarely found in mews properties.

On one side, a magnificent reception room provides outstanding entertaining and living space; wide, bright and beautifully proportioned, with ample room for both formal seating and dining areas.





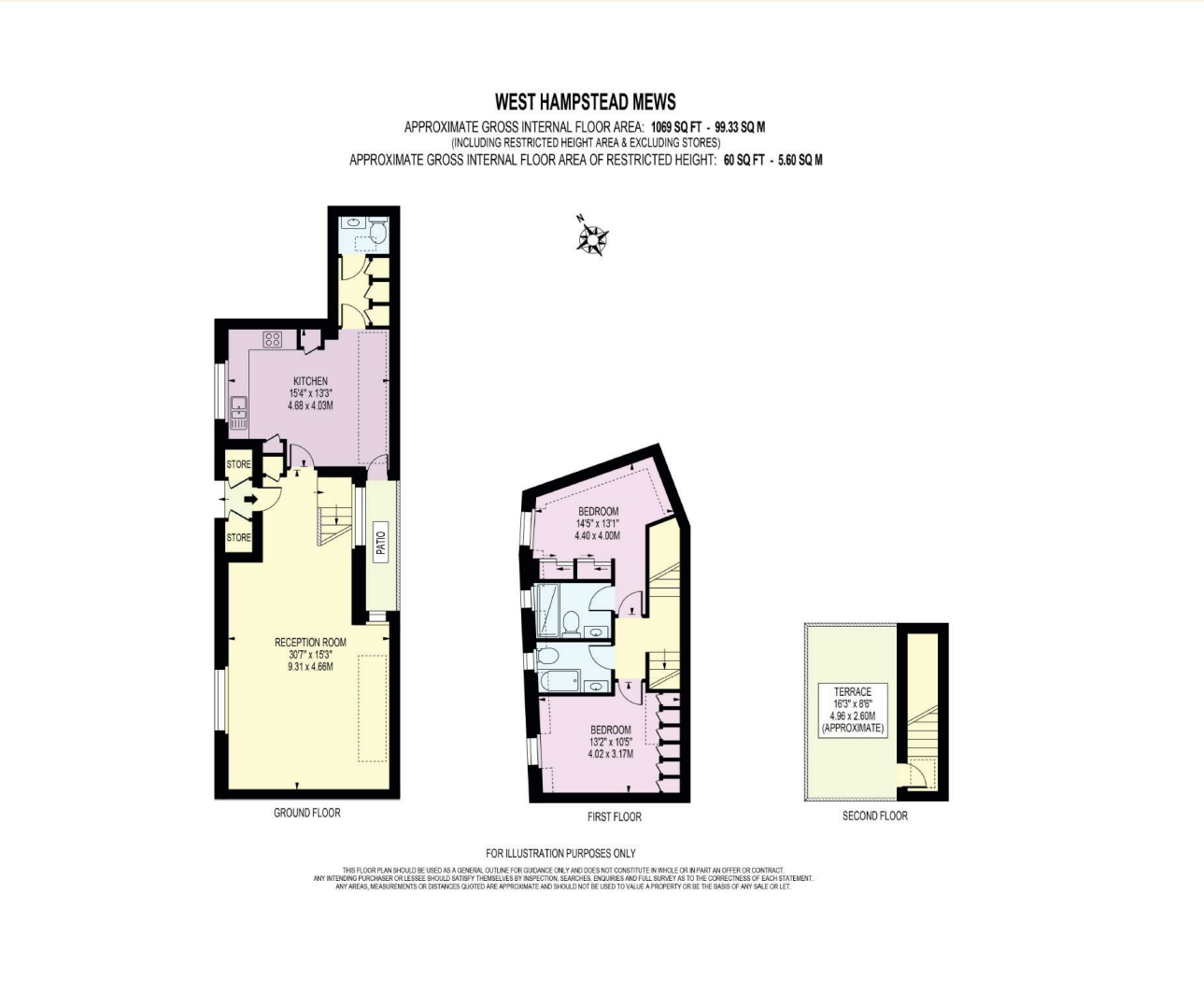
Opposite, a substantial eat in kitchen offers excellent cabinetry and preparation space alongside generous room for everyday dining. This side of the house also incorporates a separate utility area and a guest WC, thoughtfully arranged to create practical yet well balanced accommodation.

Upstairs, the first floor comprises two well proportioned double bedrooms. The principal bedroom benefits from an en suite shower room, while the second bedroom is served by a stylish family bathroom.

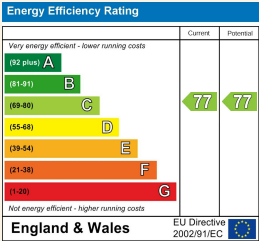
Above, a truly exceptional private roof terrace crowns the house. This expansive outdoor space provides a rare and impressive entertaining area, ideal for al fresco dining, summer gatherings or simply enjoying open skies and rooftop views.

The property is offered freehold, and residents are eligible to apply for on-street parking permits.

West Hampstead Mews is ideally located in the heart of West Hampstead, one of North West London's most desirable neighbourhoods, celebrated for its strong community feel and excellent transport connectivity.



Council Tax Band F EPC Rating C



24 Bristol Gardens
London
W9 2JQ
hello@draperlondon.com
0203 143 1900