

**Peloton Avenue, London E20**  
£880,000 Leasehold







## Description

Set within the popular Chobham Manor development in the heart of Queen Elizabeth Olympic Park, this exceptional three-bedroom apartment is located in the desirable Hyett Court. The property offers a unique combination of contemporary design, generous space, and a vibrant community setting.

This elevated apartment spans over 1,100 sq ft and is designed for modern living. The expansive open-plan living area stretches over 29 feet, creating a superb space for relaxing and entertaining. It features a state-of-the-art, fully integrated kitchen that flows seamlessly into the reception room. This main living space opens onto an impressive 43-foot private terrace, providing a fantastic extension of the home for outdoor dining and leisure.

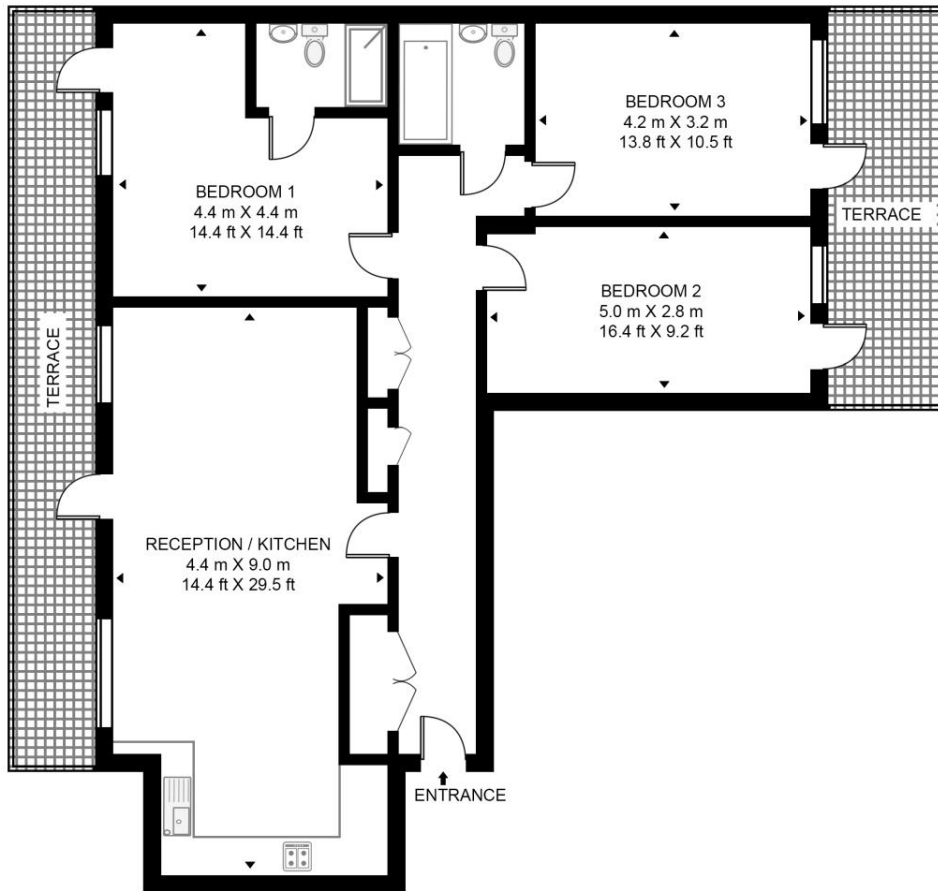
The property comprises three well-proportioned double bedrooms, each offering comfort and style. The principal bedroom benefits from built-in storage and a sleek ensuite bathroom. The second and third bedrooms share access to a second, south-easterly facing private terrace, offering a peaceful retreat. A modern, tiled family bathroom and three large storage cupboards in the hallway complete the accommodation.

- Three double bedrooms
- Two modern bathrooms
- Expansive private terrace
- Second private terrace
- Open plan living space
- State of the art kitchen
- Ample built in storage
- Ensuite to main bedroom
- Desirable parkside location
- Excellent transport links

# Floorplan

1,113 sq ft | 103 sq m

**HYETT COURT 2 PELOTON AVENUE**  
APPROXIMATE GROSS INTERNAL FLOOR AREA 1113 SQ.FT (103.4 SQ.M)  
(INCLUDING TERRACE 1416 SQ.FT (131.6 SQ.M))



FIFTH FLOOR



**HDVA**

This floor plan has been defined by the RICS Code of Measurement. This floor plan and all others are for approximate representative purposes only and upon usage is agreed to as such by the client.

WWW: [hdvirtualart.com](http://hdvirtualart.com) | TEL: 0203.974.1567 | EMAIL: [info@hdvirtualart.com](mailto:info@hdvirtualart.com)

Stratford  
5 Station Street,  
London E15 1DA  
+4420 3147 1500  
[Lettingsstratford@eu.jll.com](mailto:Lettingsstratford@eu.jll.com)

*Urban living, your way.*

[jll.co.uk/residential](http://jll.co.uk/residential)

© 2019 Jones Lang LaSalle IP, Inc. All rights reserved. All information contained herein is from sources deemed reliable; however, no representation or warranty is made to the accuracy thereof.

