

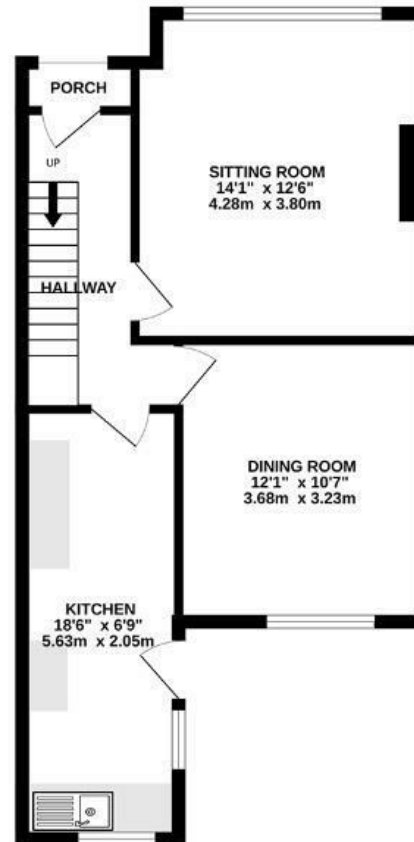
# Savoy Road

## BRISLINGTON

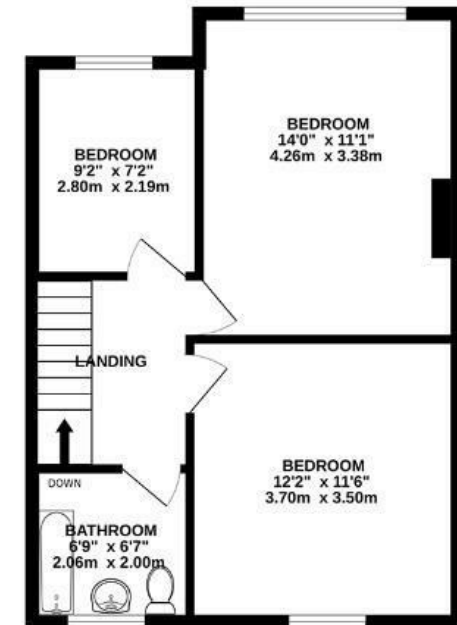
APPROXIMATE FLOOR AREA  
89.1 SQM / 959 SQFT



GROUND FLOOR



FIRST FLOOR



**Boardwalk**

# Savoy Road , BRISTOL



£325,000



3 Bedrooms



BS4 3SY



1 Bathrooms

*"Savoy Road and Brislington is a great family-friendly place to live. We love how convenient our home is to green spaces like Nightingale Valley Nature Reserve and Arnos Vale, with its 45 acres of beautiful Victorian garden cemetery. Within a 10-minute walk, you'll find two fantastic parks, a big Sainsbury's, Boots, a cinema, and a bowling alley. You're also a short walk to Sandy Park Road where you can pick up great bread from the deli and coffee from Kin."*

