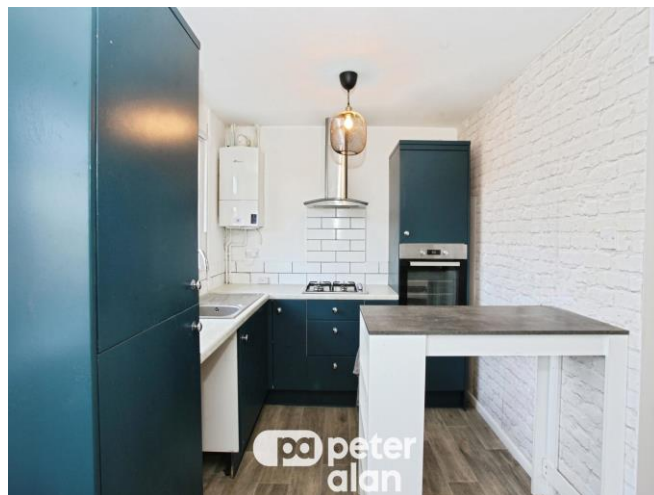




Parkwood Drive, £230,000

- NO CHAIN
- Generous driveway
- Desirable location
- Conservatory
- Council tax band C
- EPC Rating: Awaited



2 1 1



About the property

This charming two bedroom semi-detached bungalow is situated in a highly desirable area, offering an ideal home for retirees, downsizers, first time buyers or small families. Located close to schools, local amenities and excellent public transport links, the property combines convenience with a peaceful and welcoming setting.

The bungalow features a bright and spacious open plan kitchen and living area, designed to make the most of natural light. This versatile space provides an inviting environment for both relaxing and entertaining, with a modern kitchen layout and plenty of room for a dining area. Large windows allow sunlight to flood the interior, creating a warm and airy atmosphere throughout.

There are two well proportioned bedrooms, both comfortable doubles, offering flexible accommodation to suit a variety of needs. The accommodation is completed by a practical bathroom, providing all the essentials for comfortable day-to-day living.

Externally, the property benefits from a generous driveway, offering ample off-road parking for multiple vehicles, and a decent sized rear garden. The garden provides a private and relaxing outdoor space, perfect for gardening, entertaining or simply enjoying the fresh air.

With its combination of spacious living, excellent natural light and practical outdoor space, this bungalow represents a highly appealing opportunity. Set in a sought-after location with nearby schools and public transport. Early viewing is recommended.



Accommodation

Entrance Hallway

Kitchen / Living Room

18' 1" x 16' 9" (5.51m x 5.11m)

Bedroom 1

10' 2" x 10' 2" (3.10m x 3.10m)

Bedroom 2

9' 6" x 7' 7" (2.90m x 2.31m)

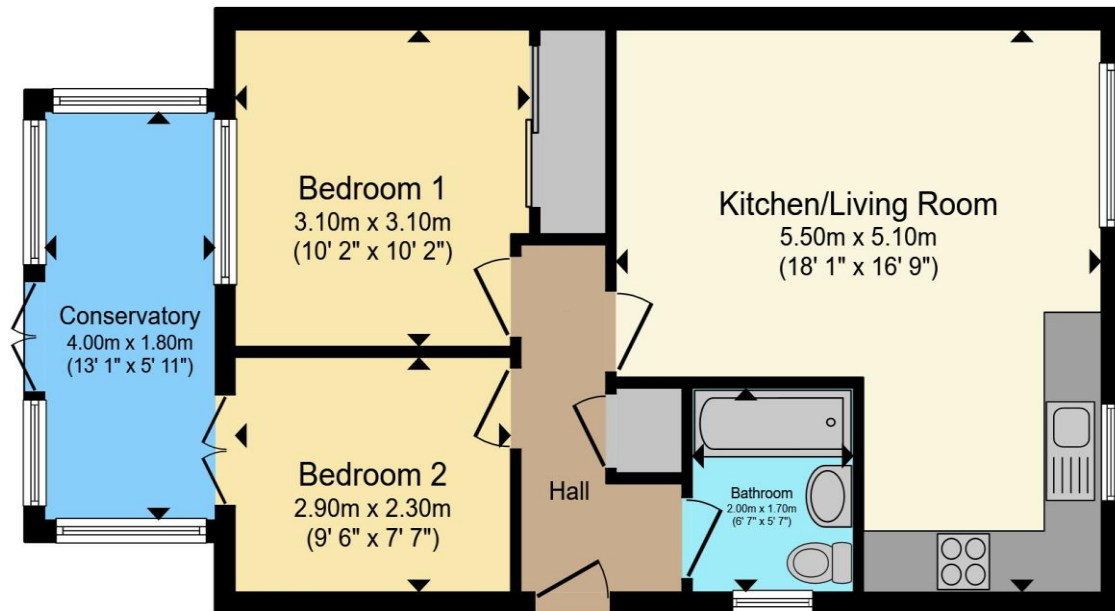
Conservatory

13' 1" x 5' 11" (3.99m x 1.80m)

01633 221892

newport@peteralan.co.uk

Floorplan



Total floor area 58.1 m² (625 sq.ft.) approx

This floor plan is for illustrative purposes only. It is not drawn to scale. Any measurements, floor areas (including any total floor area), openings and orientation are approximate. No details are guaranteed, they cannot be relied upon for any purpose and they do not form part of any agreement. No liability is taken for any error, omission or misstatement. A party must rely upon its own inspection(s). Powered by www.propertybox.io



Important Information

Note while we endeavour to make our sales details accurate and reliable, if there is any point which is of particular interest to you, please contact the office and we will be pleased to confirm the position for you. We have not personally tested any apparatus, equipment, fixtures, fittings or services and cannot verify they are in working order or fit for their purposes. Nothing in these particulars is intended to indicate that carpets or curtains, furnishings or fittings, electrical goods (whether wired or not). Gas fires or light fittings or any other fixtures not expressly included form part of the property offered for sale. This computer generated Floorplan, if applicable, is intended as a general guide to the layout and design of the property. It is not to scale and should not be relied upon for dimensions. Tenure: We cannot confirm the tenure of the property as we have not had access to the legal documents. The buyer is advised to obtain verification from their solicitor or surveyor.

Peter Alan Limited is registered in England and Wales under company number 2073153, Registered Office is Cumbria House, 16-20 Hockliffe Street, Leighton Buzzard, Bedfordshire, LU7 1GN. VAT Registration Number is 500 2481 05. For activities relating to regulated mortgages and non-investment insurance contracts, Peter Alan Limited is an appointed representative of Connells Limited which is authorised and regulated by the Financial Conduct Authority. Connells Limited's Financial Services Register number is 302221. Most buy-to-let

