

Pierrepont Road


West Bridgford

Nottingham

NG2 5BP

£500,000



 0115 841 1155



- Semi-detached family home
- Two bathrooms
- Rear garden and patio
- Tenure - Freehold
- Four bedrooms
- Extended kitchen
- Close to riverside walks
- Council Tax Band - C

0115 841 1155

Pierrepont Road, West Bridgford, Nottingham, NG2 5BP

Key Features

This attractive Edwardian semi-detached home offers generous and versatile accommodation arranged over four levels, combining characterful proportions with modern family living, all set in the highly sought-after area of Lady Bay.

The ground floor opens with a welcoming entrance leading through to a well-proportioned bay-fronted lounge, providing a cosy yet elegant reception space. To the rear, the property has been thoughtfully extended to create an impressive open-plan kitchen/diner measuring over 8 metres in length. This expansive space forms the hub of the home, offering ample room for cooking, dining and entertaining, with a central island and direct access to the rear garden. A convenient ground floor WC and access down to the cellar complete this level.

On the first floor, there are three well-sized bedrooms along with a family bathroom. The main bedroom on this level benefits from generous proportions, while the remaining rooms offer flexibility for family living, guest accommodation or home working.

The second floor hosts a superb principal bedroom suite, enjoying excellent dimensions along with the added luxury of an en-suite shower room, creating a private retreat away from the main living accommodation.

Externally, the property benefits from a large rear garden, offering a fantastic outdoor space ideal for families, entertaining, or simply enjoying a peaceful setting.

Lady Bay is one of West Bridgford's most desirable locations, known for its strong sense of community, excellent local schools, and array of independent shops, cafés and amenities. The nearby River Trent provides beautiful scenic walks, cycling routes and easy access into Nottingham city centre, making it ideal for both commuters and those seeking an active, outdoor lifestyle. The combination of green spaces, riverside living and a vibrant local atmosphere makes Lady Bay an exceptional place to call home.





0115 841 1155

Pierrepont Road, West Bridgford, Nottingham, NG2 5BP



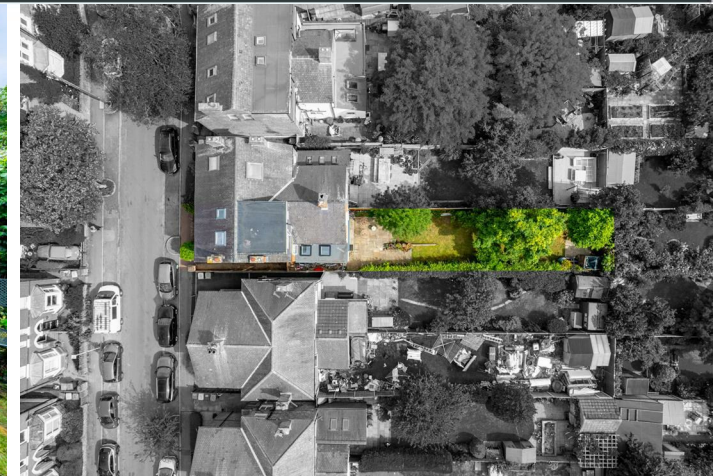
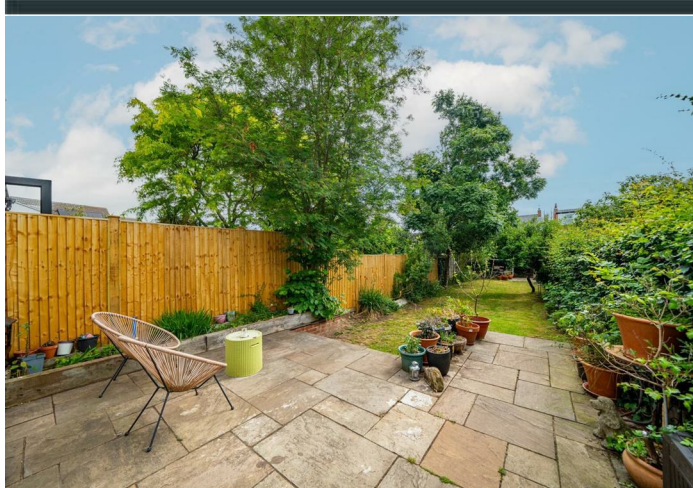
Total area: approx. 150.9 sq. metres (1624.4 sq. feet)

Storage area on lower ground floor is 62.9m²
Plan produced using PlanUp.



0115 841 1155

Pierrepont Road, West Bridgford, Nottingham, NG2 5BP




Interested in this home?

Contact the FHP Living Team on 0115 841 1155

23 Bridgford Road
West Bridgford
Nottingham
NG2 6AU

1 Weekday Cross
The Lace Market
Nottingham
NG1 2GB

Energy Efficiency Rating		Current	Potential
Very energy efficient - lower running costs			
(92 plus) A			
(81-91) B			
(69-80) C			79
(55-68) D		66	
(39-54) E			
(21-38) F			
(1-20) G			
Not energy efficient - higher running costs			
England & Wales		EU Directive 2002/91/EC 	

These sales particulars have been prepared by FHP Living on the instruction of the vendor. Services, equipment and fittings mentioned in these particulars have NOT been tested, and as such, no warranties can be given. Prospective purchasers are advised to make their own enquiries regarding such matters. These sales particulars are produced in good faith and are not intended to form part of a contract. Whilst FHP Living have taken care in obtaining internal measurements, they should only be regarded as approximate.

Purchaser information - Under the Protecting Against Money Laundering and the Proceeds of Crime Act 2002, FHP Living require any successful purchasers proceeding with a purchase to provide two forms of identification i.e. passport or photocard driving license and a recent utility bill. This evidence will be required prior to FHP Living instructing solicitors in the purchase or the sale of a property.