



SARAH CLARK
PROPERTY CONSULTANTS

TFF FRONT 23 |
BEAUFORT ROAD, BRISTOL, BS8 2JX

Available from 1st August. Located on the highly sought-after Beaufort Road in Clifton, this beautifully refurbished one-bedroom apartment offers stylish, modern living in one of Bristol's most desirable neighbourhoods. Ideally situated within easy walking distance of Whiteladies Road, Clifton Village, The Downs, Clifton Down Railway Station, and excellent local bus links, the property is perfectly positioned to enjoy the very best of Clifton's amenities, cafés, restaurants, and green spaces.

The accommodation comprises a bright and welcoming lounge, creating a comfortable space for relaxing or entertaining. The contemporary kitchen is finished to a high standard and comes fully equipped with an electric hob and oven, integrated dishwasher, and fridge freezer, offering both practicality and modern appeal.

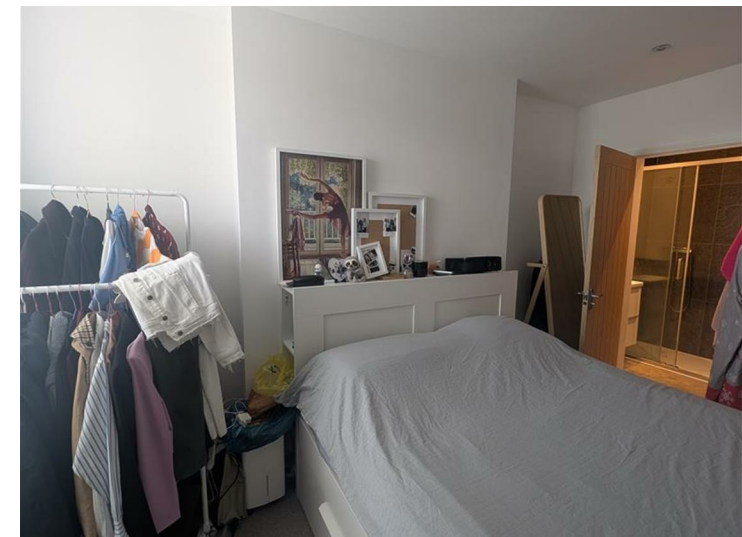
The spacious double bedroom provides a peaceful retreat and benefits from a stylish en-suite shower room featuring a walk-in shower. A separate WC adds further convenience for residents and guests alike.

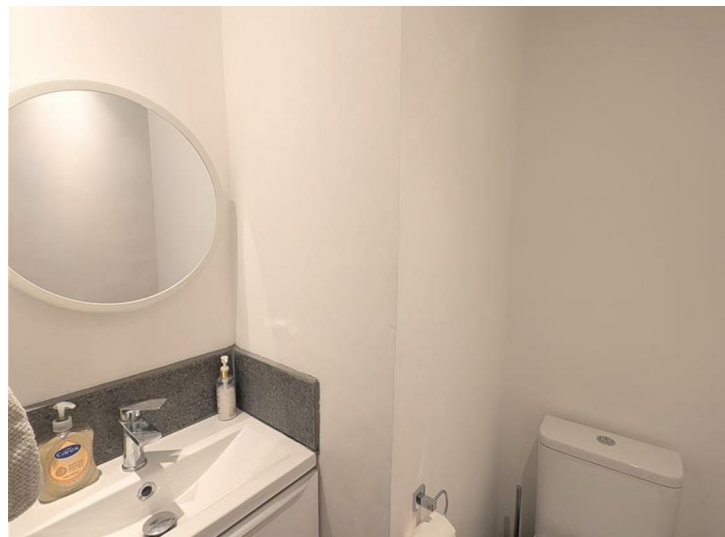
Finished throughout to an excellent standard, this attractive apartment combines character, comfort, and convenience in a superb Clifton location. Ideal for a professional individual or couple seeking high-quality accommodation close to the city



Features

- Available August 2026
- Located on the highly sought-after Beaufort Road in Clifton
- Beautifully refurbished
- One Bedroom
- Modern Kitchen
- Close to local amenities





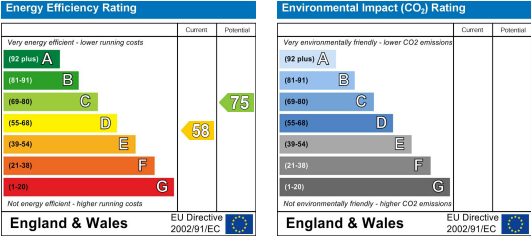
TENURE

SERVICES

Customise to type text here

LOCAL AUTHORITY

Customise to type text here



IMPORTANT: we would like to inform prospective purchasers that these sales particulars have been prepared as a general guide only. A detailed survey has not been carried out, nor the services, appliances and fittings tested. Room sizes should not be relied upon for furnishing purposes and are approximate. If floor plans are included, they are for guidance only and illustration purposes only and may not be to scale. If there are any important matters likely to affect your decision to buy, please contact us before viewing the property.