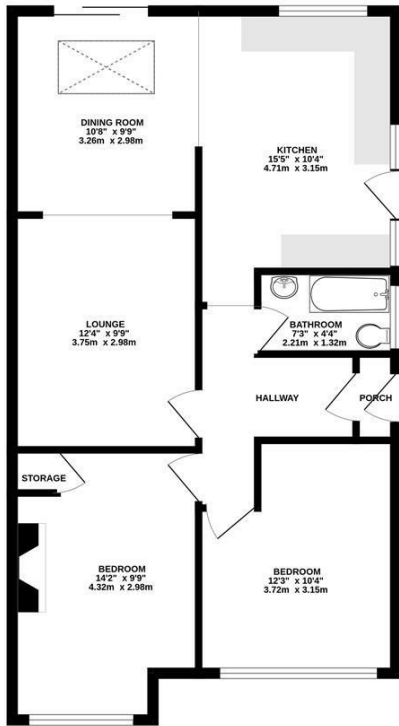




**Keith
Ashton**

Orchard Lane, Pilgrims Hatch
Brentwood

GROUND FLOOR
710 sq.ft. (66.0 sq.m.) approx.



TOTAL FLOOR AREA: 710 sq.ft. (66.0 sq.m.) approx.
Measurements are approximate. Not to scale. Illustrative purposes only.
Made with Meeqaq C2026

£425,000

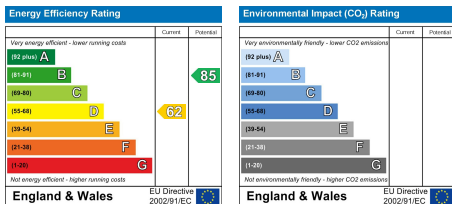


43 Orchard Lane, Pilgrims Hatch, Brentwood, CM15 9RD

We are delighted to bring to market this semi-detached bungalow set within the popular Pilgrims Hatch area of Brentwood. Offered with No Onward Chain, the property features bright and spacious open-plan living accommodation to the rear and two well-proportioned double bedrooms to the front. A large rear garden is predominantly laid to lawn with mature shrubs and borders, providing an excellent outdoor space for families and entertaining.

The property also benefits from a converted loft space, offering excellent potential for further enhancement, subject to the necessary consents, with the opportunity to create a superb family home.

Set within easy reach of local amenities and highly regarded schools, and just a short drive from Brentwood station, the property offers excellent transport links into London and beyond.



SERVICES:

Local Authority: Brentwood
Council tax band: D
Post code: CM15 9RD

VIEWING:

Strictly by prior arrangement with Keith Ashton Estate Agents

OPENING HOURS:

Monday to Friday: 8.45AM - 6.30PM | Saturdays: 9AM - 5.30PM | Sundays: 10AM - 2PM

MORTGAGE INFORMATION: We offer the additional facility of an in-house Independent Financial Adviser who will access all mortgage lenders with the purpose of providing you with the benefit of choice. For quotations or comparables please call 01277 260858 or visit our interactive website at www.mortgagebusiness.net



We the Agent have not tested any apparatus, fittings or services for this property. The plot size is intended merely as a guide and has not been officially measured or verified by the Agent. Photographs are for illustration only and may depict items which are not for sale or included in the sale of the property. As part of the service we offer we may recommend ancillary services to you which we believe may help you with your property transaction. We wish to make you aware, that should you decide to use these services we will receive a referral fee. For full and detailed information please visit 'terms and conditions' on our website www.keithashton.co.uk