



**1, Limestone Way, Bleadon**

Weston-Super-Mare

**£754,995**



## 1, Limestone Way

Bleadon, Weston-Super-Mare

Brand new 4-bed detached home at Eden's Green with double garage, en suite, dressing room, landscaped garden, zero energy bills, NHBC warranty, and flexible moving options. Council Tax band: TBD

Tenure: Freehold

- Plot 1 - The Kingsholm Show Home - Eden's Green Development
- The Show home includes a number of high-specification customer upgrades.
- Landscaped gardens to front & rear
- Curtains/Blinds package & Light fittings included as seen - Furniture not included
- Octopus Energy plot - Zero home energy bills.
- Principal bedroom has an en suite & private dressing room area
- Detached double garage & driveway
- Ready to move into, Part exchange and Assisted move available.





### **Kitchen/Diner**

A spacious ground-floor kitchen located to the rear of the property, featuring a stylish modern design and ample storage throughout. It includes a built-in dishwasher, double oven, and wine fridge, with direct access to the utility area for added convenience.

### **Dining room/Family Area**

Located towards the rear of the property, the dining and family room features bi-fold doors opening onto the patio, allowing natural light to flow through the space.

### **Hallway**

Spacious hallway leading to the lounge, study & kitchen/dining/family area.

### **Lounge**

Occupying the front of the home, the elegant lounge features a charming bay window, enhancing natural light and adding character to the living space.

### **Study**

Positioned at the front of the home, the spacious office offers excellent versatility and can easily be adapted as a family room or children's play area, depending on your needs.

### **Principal Bedroom**

A spacious and well-appointed double bedroom featuring direct access to a stylish en suite and dedicated dressing area, offering both comfort and convenience.

### **En Suite**

Stylish En suite 1, located off the principal bedroom, finished to a high standard with quality fixtures and fittings throughout.

### **Bedroom 2**

A generously sized double bedroom featuring a private en suite, offering both comfort and convenience.

### **En Suite 2**





EDEN'S GREEN  
BLEADON

# VIEW HOME OPEN WEEKEND

16/17 May 2026

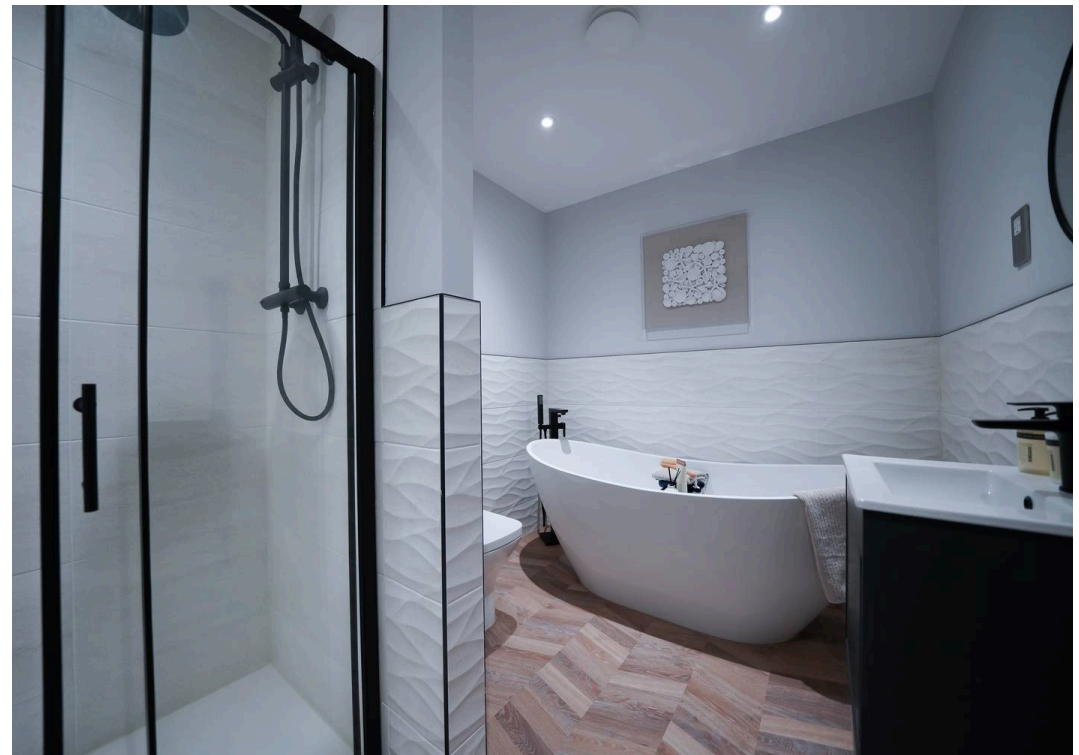
## REAR GARDEN

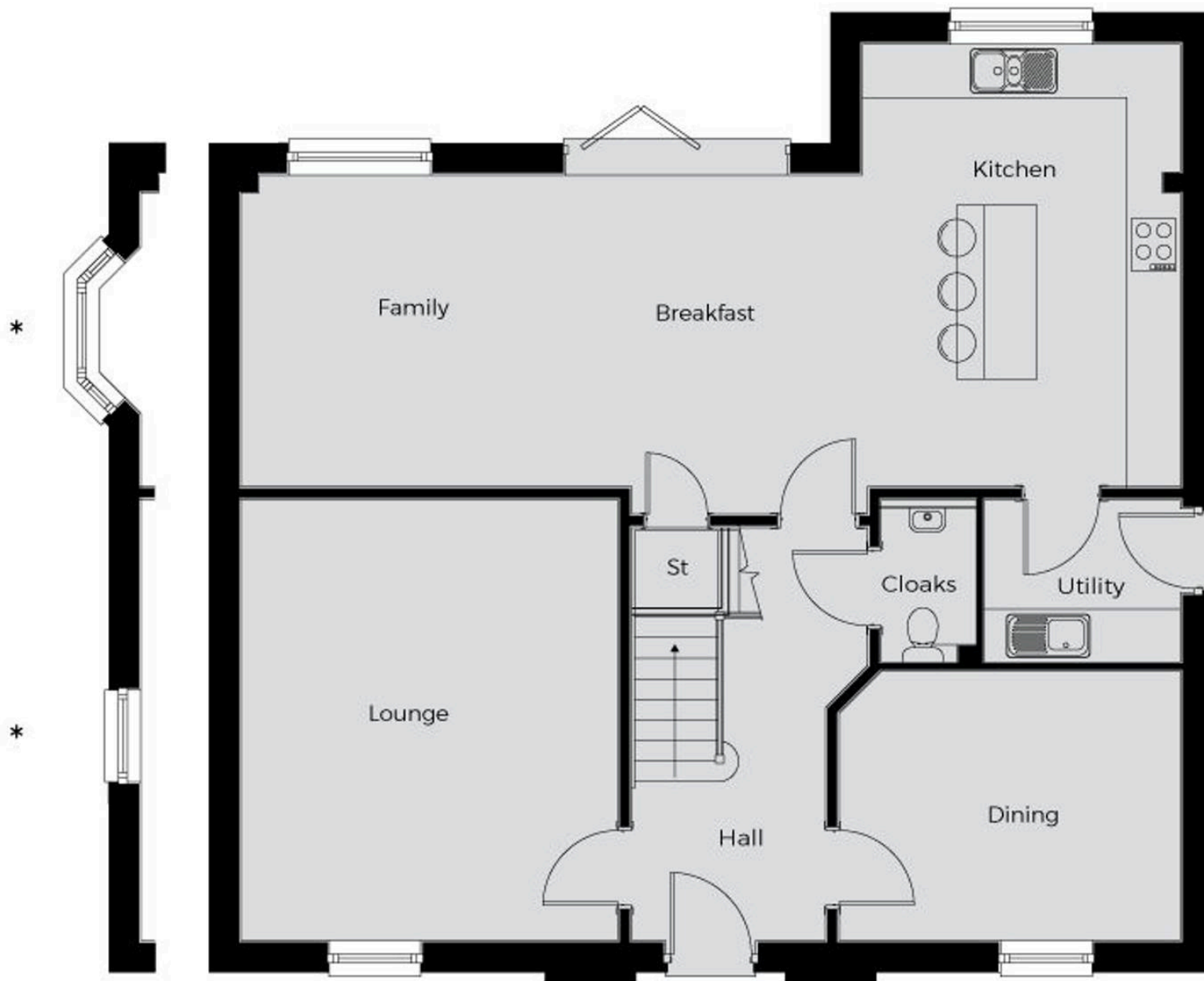
Enhanced landscaped rear garden

## DOUBLE GARAGE

2 Parking Spaces

Double detached garage with 2 parking spaces





You can include any text here. The text can be modified upon generating your brochure.