

RESIDE

MANCHESTER

3 The Lightwell St. Anns Square
, Manchester, M2 7HW

£1,200 PCM



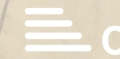
1



1



1



1

3 The Lightwell St. Anns Square

, Manchester, M2 7HW

A beautifully presented one-bedroom apartment located in The Lightwell, St Ann's Square – one of Manchester's most sought-after locations.

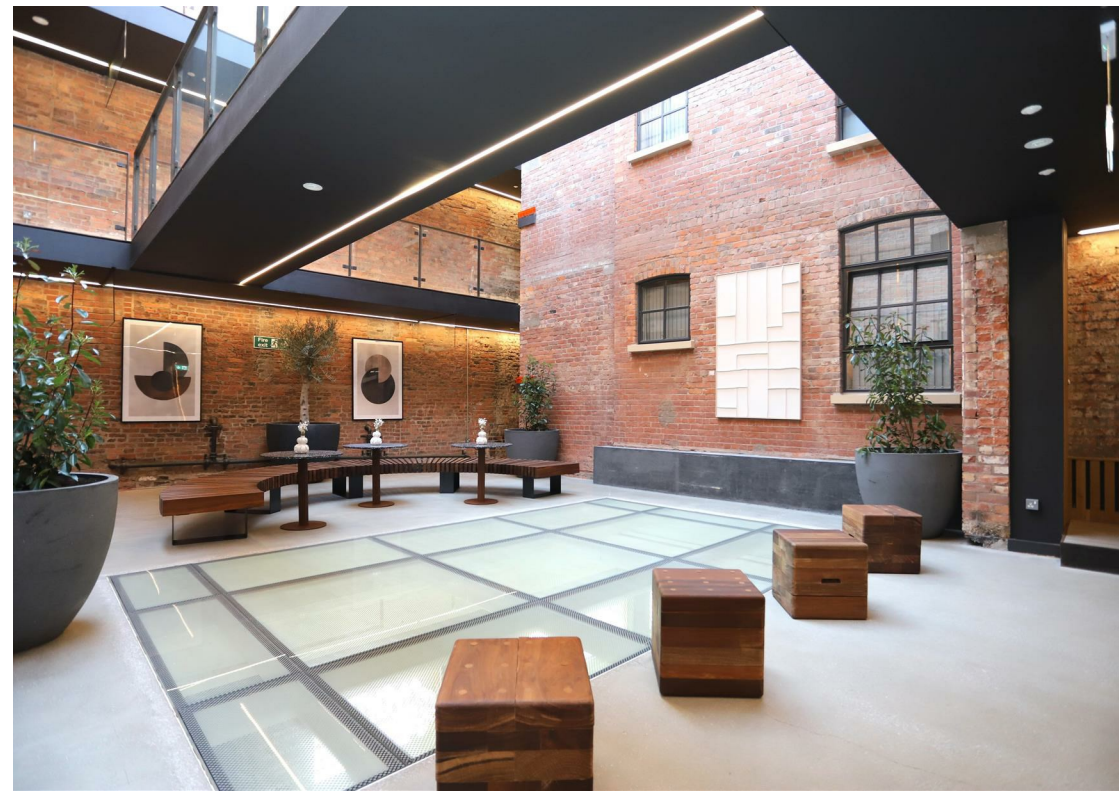
This stylish apartment offers a perfect blend of contemporary design and high-quality finishes throughout. The open-plan living area is bright and spacious, featuring large windows that allow plenty of natural light.

Situated in the heart of the city centre, The Lightwell is moments away from Deansgate, the Royal Exchange Theatre, and Manchester Arndale – offering the very best of shopping, dining, and entertainment right on your doorstep.

The development also benefits from a beautifully landscaped internal courtyard, secure entry system, and lift access.

Available fully furnished and ready to move in immediately.

- One Double Bedroom
- One Bathroom
- Exposed Brickwork & Beams
- Furnished Throughout
- Available Immediately
- EPC Rating C
- Centrally Located
- High Ceilings
- Located in St Ann's Square

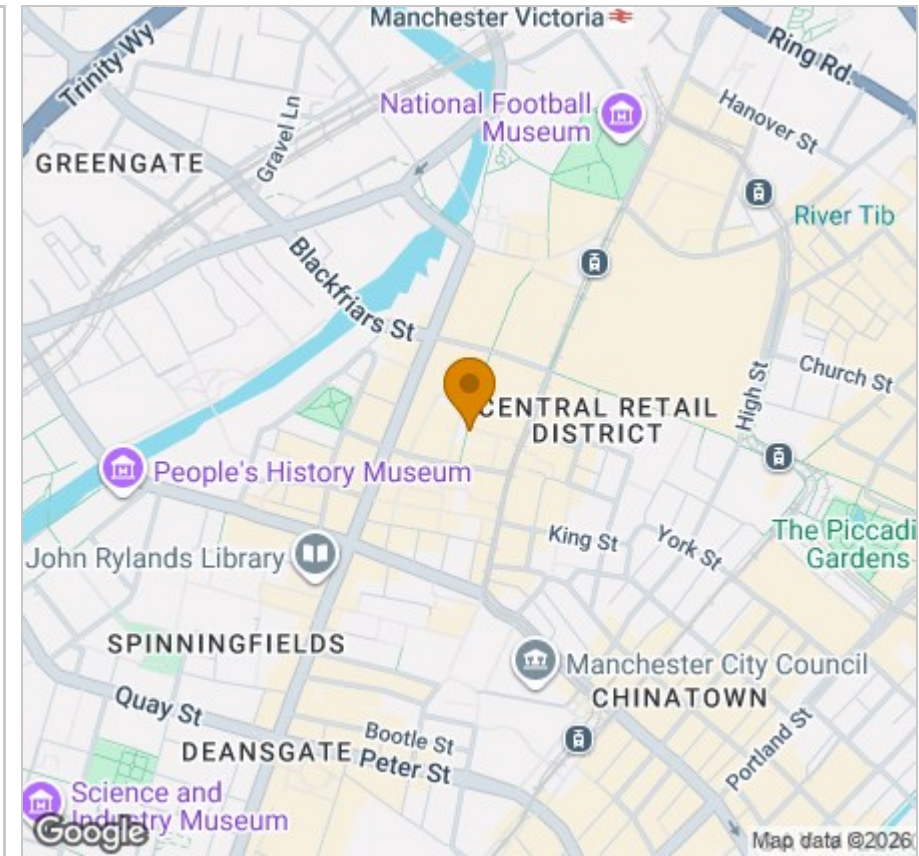




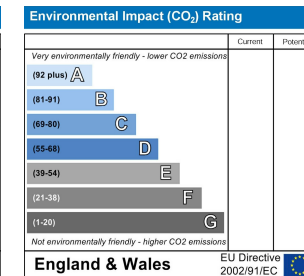
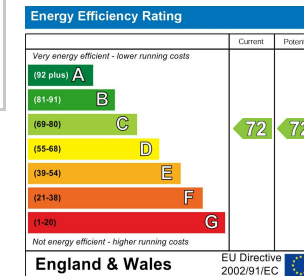
Floor Plan



Area Map



Energy Efficiency Graph



Viewing

Please contact our Reside Manchester Office on 0161 837 2840 if you wish to arrange a viewing appointment for this property or require further information.

These particulars, whilst believed to be accurate are set out as a general outline only for guidance and do not constitute any part of an offer or contract. Intending purchasers should not rely on them as statements of representation of fact, but must satisfy themselves by inspection or otherwise as to their accuracy. No person in this firm's employment has the authority to make or give any representation or warranty in respect of the property.