



YOUR MOVE

- Chris Stonock -

WWW.YOUR-MOVE.CO.UK

Wensley Close, Ouston, Chester Le Street, County Durham
£77,000

Wensley Close, Ouston, Chester Le Street, County Durham

£77,000

DESCRIPTION

This two bedroom GROUND FLOOR FLAT has been immaculately maintained by the current owners and provides excellent accommodation for those looking to get onto the property ladder ,for those downsizing or for a Buy to Let investment. Consisting of Two Bedrooms, a bright and airy Lounge with picture window looking along the close, Bathroom with bath and shower above, Wc and pedestal hand washbasin and a well fitted Kitchen with electric oven and hob, a built-in washing machine, extractor hood, under-lighting to wall units and a rear door to the rear garden. The property also comprises a Garage in a block of similar garages and a spacious rear garden laid to lawn with borders. An extended lease has been purchased, providing a lease for a further 100 years from renewal. EPC Rating E. a copy of the EPC will be available upon request.

LOCATION

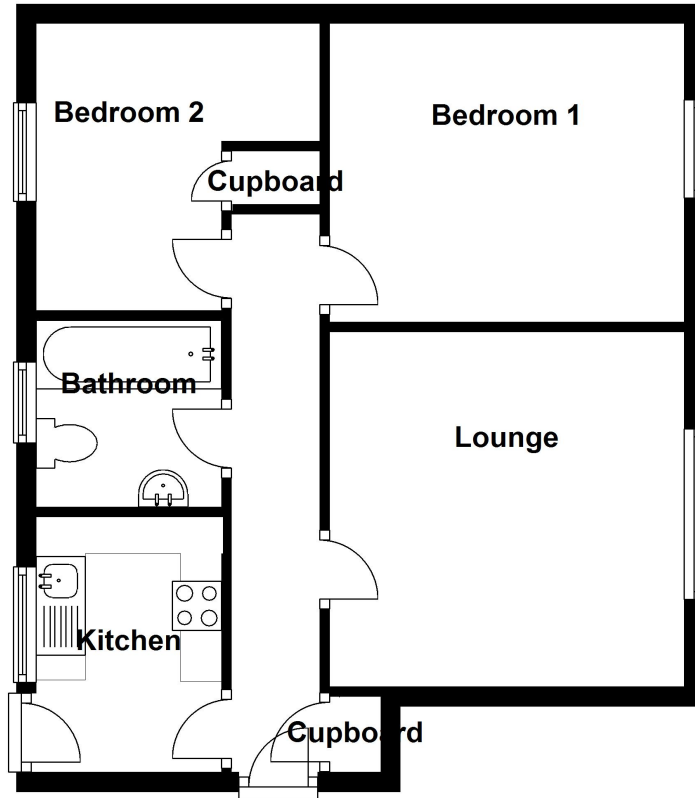
Wensley Close is situated on the popular Urpeth Grange Estate in Ouston, a village in County Durham, approximately 5 miles to the south-west of the city of Newcastle. The village of Ouston is surrounded by countryside, farm life and stunning views whilst being located with excellent transport links for travelling both North and South of the region. There are three schools in Ouston, a few local shops and strong bus routes to nearby Chester Le Street and with excellent road, train and bus links thereafter is well suited to the traveller or commuter.

DIRECTIONS

From the A693 from Chester Le Street at the roundabout signposted Ouston take third exit onto Ouston Lane, through Perkinsville until St Benets Way on your left after the right hand bend. Take left onto St Benets Way and continue along this road. Wensley Close is 2nd right and the property is round the first left hand bend and positioned on the right hand corner of the cul de sac in a block of similar flats.



Ground Floor



For full EPC please contact the branch

Your Move Chris Stonock is the trading name of Chris Stonock Limited, registered company number 6248009, registered office 53 Front Street, Chester Le Street, DH3 3BH. Your Move Chris Stonock is an independently owned and operated business, operated under licence from your-move.co.uk Limited

IMPORTANT NOTE TO PURCHASERS: We endeavour to make our sales particulars accurate and reliable, however, they do not constitute or form part of an offer or any contract and none is to be relied upon as statements of representation or fact. The services, systems and appliances listed in this specification have not been tested by us and no guarantee as to their operating ability or efficiency is given. All measurements have been taken as guide to prospective buyers only, and are not precise. Floor plans where included are not to scale and accuracy is not guaranteed. If you require clarification or further information on any points, please contact us, especially if you are travelling some distance to view. Fixtures and fittings other than those mentioned are to be agreed with the seller.

*Source: Nielsen, Oct 2012.

**Calls may be recorded and/or monitored for training and/or security purposes.



53 Front Street, Chester Le Street, County Durham, DH3 3BH

tel: 0191 388 2129 **

email: chesterlestreet@your-move.co.uk

www.your-move.co.uk - The UK's most visited estate agency website*



YOUR MOVE

- Chris Stonock -

WWW.YOUR-MOVE.CO.UK

Our properties also appear on...  rightmove.co.uk