



The Broadway, SW19

£765,000

Extending to near 93 square meters, this two double bedroom, two bathroom penthouse-style apartment is offered with no onward chain, a share of freehold and allocated underground parking.

Located on The Broadway, centrally located in Wimbledon with immediate access to South West Rail, District Line and Northern Line links. Wimbledon Broadway offers a wide range of bars, restaurants and shopping.

Features

Centre Of Wimbledon Town
Two Double Bedrooms
Private 600 Foot Terrace
Huge Private Roof Terrace
Underground Parking
Over 1,000 Square Feet



The Broadway, SW19

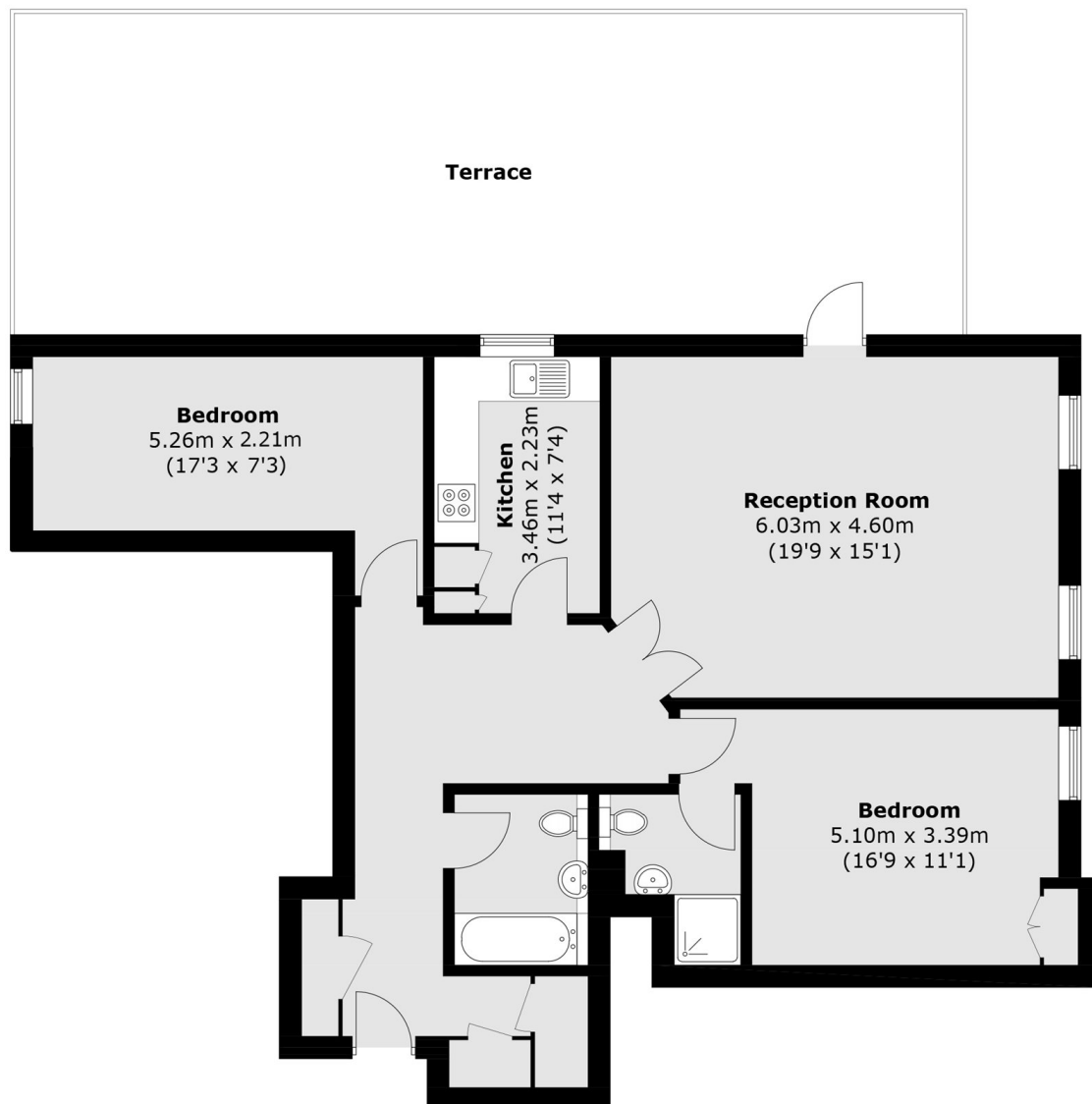
Occupying the top floor with lift access, it benefits from having no neighbours above. The layout includes a separate kitchen with space for dining and a generous reception room filled with natural light.

The impressive private south-facing terrace approaching 600 sq ft is a rare offering in central Wimbledon, creating exceptional indoor/outdoor living and an ideal setting for entertaining, with far-reaching views. Subject to the usual consents, there is potential to extend further onto the terrace.

Distinctive, original and quietly characterful, the property combines central convenience with elevated, private living moments from Wimbledon Station with direct access to South Western Railway, District and Northern Line services.



The Broadway, London, SW19



Fifth Floor

Total area (approx.): 93.8 sq. m (1,009.6 sq. ft)

Terrace: 55.3 sq. m (595.2 sq. ft)