

Red Road, Borehamwood

£1,750 ()

VILLAGE
E S T A T E S



AVAILABLE NOW!! We are pleased to offer this spacious two double bedroom ground floor garden maisonette, situated on arguably Borehamwood's finest road, Red Road.

Ideally located just a short stroll from Borehamwood's bustling high street, excellent shopping facilities, places of worship, and the mainline station, this property offers both convenience and comfort.

Internally, the property comprises a porch, welcoming entrance hall with an abundance of storage, fitted kitchen, bright double-aspect lounge, family bathroom, and two generously sized double bedrooms.

Externally, the property benefits from a private garden, parking space, and garage.

Early viewing is highly recommended.

Please note that to rent this property you need a combined salary of £52,500

020 3764 2222
www.village-estates.co.uk



Village Estates
The Corner Shop High Street, Elstree
Herts WD6 3BY

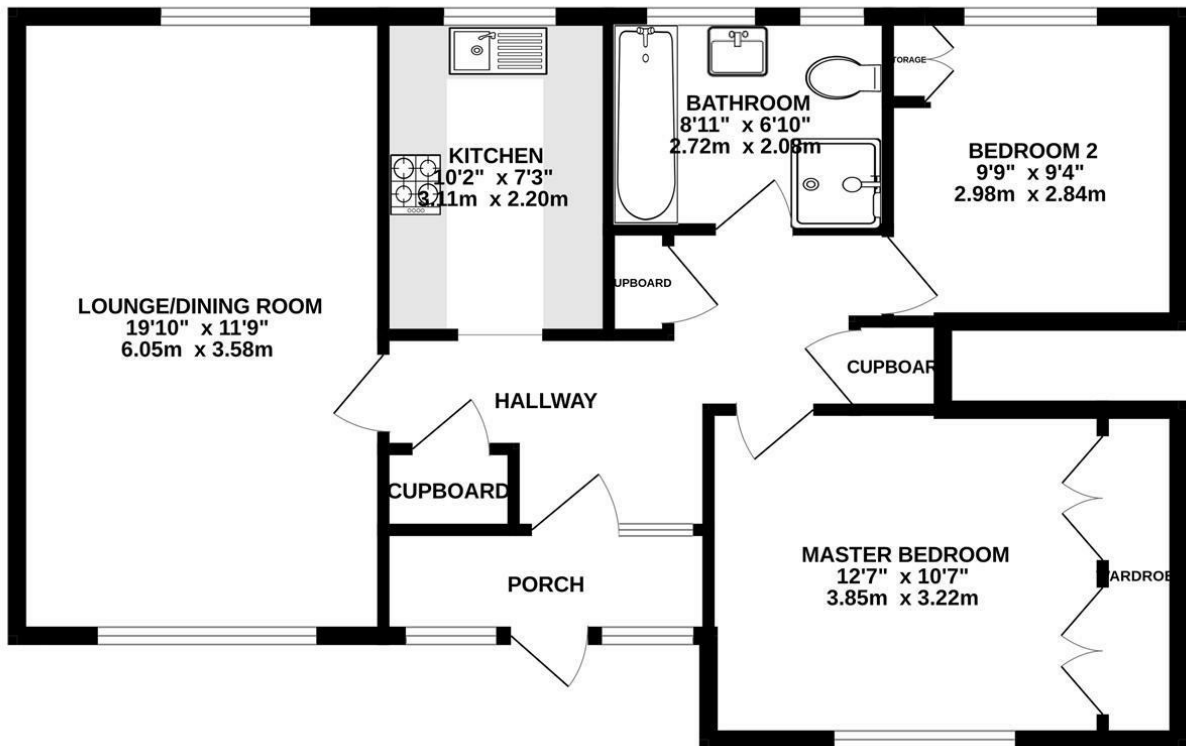
Important Note: These particulars do not form part of any contract. All measurements are approximate and should not be relied upon. All prices quoted are strictly subject to contract.







GROUND FLOOR
767 sq.ft. (71.2 sq.m.) approx.



Available on the
App Store



ANDROID APP ON
Google play

Energy Efficiency Rating		Current	Potential
Very energy efficient - lower running costs			
(92 plus)	A		
(61-91)	B		
(69-80)	C		
(55-68)	D		
(39-54)	E		
(21-38)	F		
(1-20)	G		
Not energy efficient - higher running costs			
England & Wales		EU Directive 2002/91/EC	