







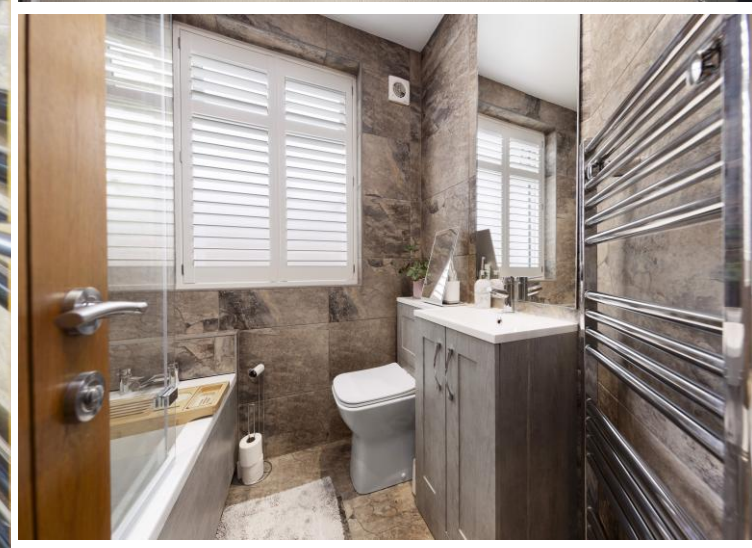
## 98 Hady Crescent

Chesterfield • Derbyshire • S41 0EA

Guide Price £300,000 to £325,000

Completely renovated and thoughtfully extended, this beautifully presented three-bedroom semi-detached home offers 1061 sq ft of stylish, practical living space. Enjoying a peaceful position with far-reaching views to the front and open fields to the rear, it's perfect for couples, professionals, and starter families seeking a forever home with character and comfort. Step inside to a spacious entrance hallway, where to the left you'll find bedroom three—ideal as a guest room, nursery, or home office. The bay-windowed living room features fitted blinds, alcove shelving, and a charming log-burning stove, creating a cosy and inviting space. The open-plan dining room flows seamlessly into the shaker-style kitchen, complete with integrated appliances, a gas cooker, a generous breakfast bar, and a large storage cupboard. To the rear, the sun room is a standout feature, with Velux windows and bifold doors opening onto the garden—flooding the space with natural light and offering a perfect spot to relax or entertain. Completing the ground floor is a modern three-piece bathroom with bath and shower over, sink, toilet, and shutter blinds. Upstairs, the principal bedroom overlooks the rear garden and includes bespoke fitted wardrobes, a large eaves storage space, and a contemporary en-suite shower room. Bedroom two is another generous double with a bay window and fitted wardrobes. Externally, the property benefits from a gated driveway providing ample off-road parking. The rear garden is beautifully landscaped, featuring a sunken seating area, slabbed patio, astro-turfed and stoned sections, a feature border, designed for low-maintenance enjoyment.





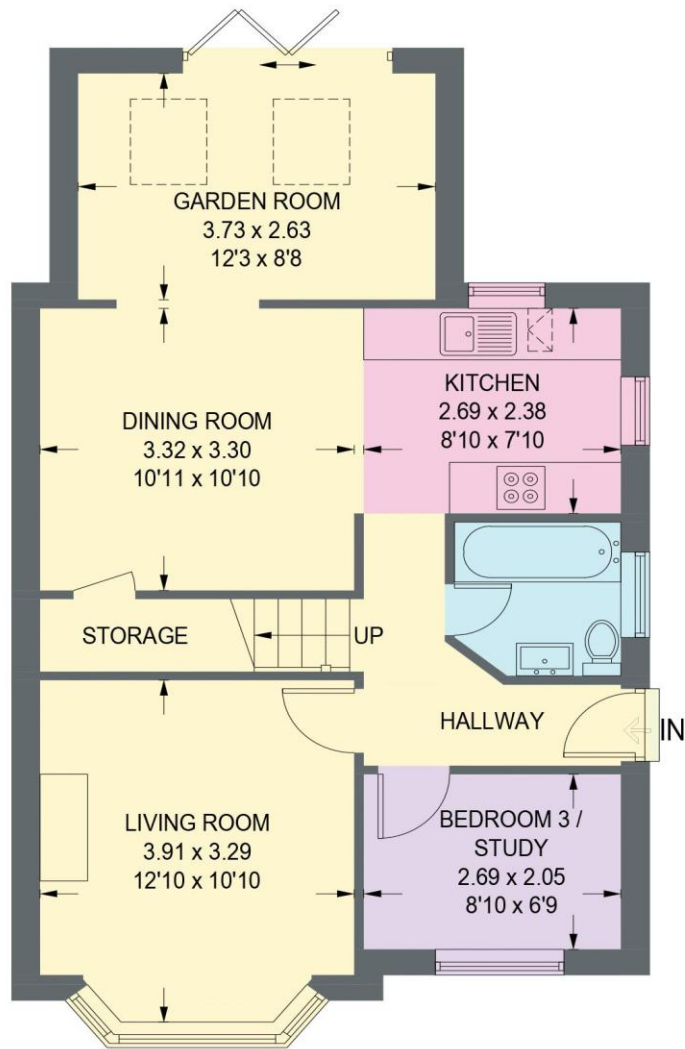
- Three Bedroom Semi-Detached
- Completely Renovated & Extended
- Principal Bedroom w/ Fitted Wardrobes & En-Suite
- Open Plan Kitchen-Dining Area
- Three Piece Bathroom
- Living Room w/ Alcove Shelving & Log Burner
- Off Road Parking & Gated Front
- Low Maintenance Rear Garden w/ Seating Area
- Garden Room w/ Bi-Folding Doors
- EPC Rating: D / Council Tax Band B



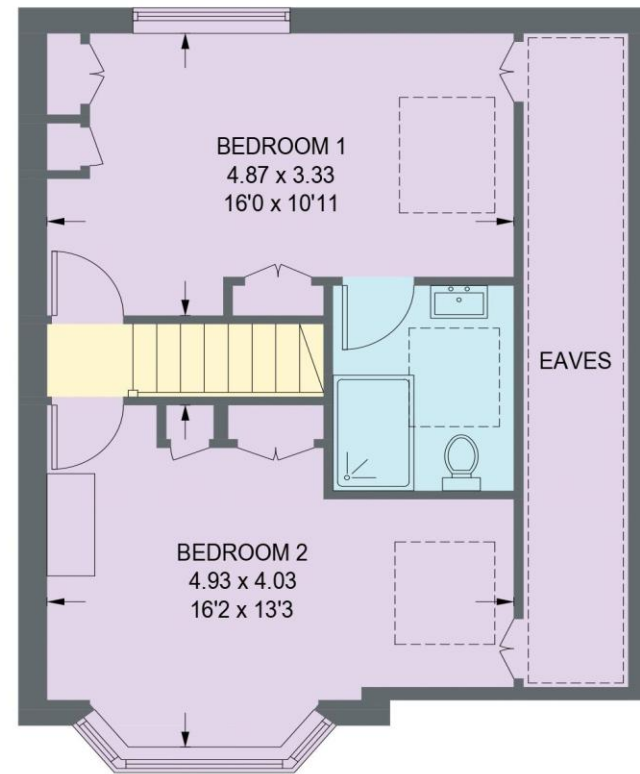


# 98 HADY CRESCENT

APPROXIMATE GROSS INTERNAL AREA = 98.6 SQ M / 1061.4 SQ FT



**GROUND FLOOR = 51.0 SQ M / 548.5 SQ FT**



**FIRST FLOOR = 47.6 SQ M / 512.8 SQ FT**

Illustration for identification purposes only, measurements are approximate, not to scale. (ID1248188)



haus

31 West Bars, Chesterfield, S40 1AG  
[chesterfield@haushomes.co.uk](mailto:chesterfield@haushomes.co.uk) [haushomes.co.uk](http://haushomes.co.uk)

01246 380 535