



Pinkmove

## Heol Senni

Guide Price £210,000 - £220,000

- Guide Price £210,000 - £220,000
- Off-Road Parking for Two Vehicles
- Quiet and Sought-After Residential Location
- Immaculately Presented Two-Bedroom Terraced Home
- Well-Presented Rear Garden with Rear Access
- Spacious Lounge and Modern Kitchen/Diner
- Convenient Access to the M4 and Local Amenities
- Close to Well-Regarded Local Schools and Nurseries
- EPC Rating: C



Pinkmove

01633 746088  
team@pinkmove.co.uk



## About the property

We are excited to present this immaculately maintained two-bedroom terraced property, set in a quiet and sought-after location while still offering easy access to the M4. Perfectly suited to first-time buyers, this welcoming home combines peace, convenience and modern living.

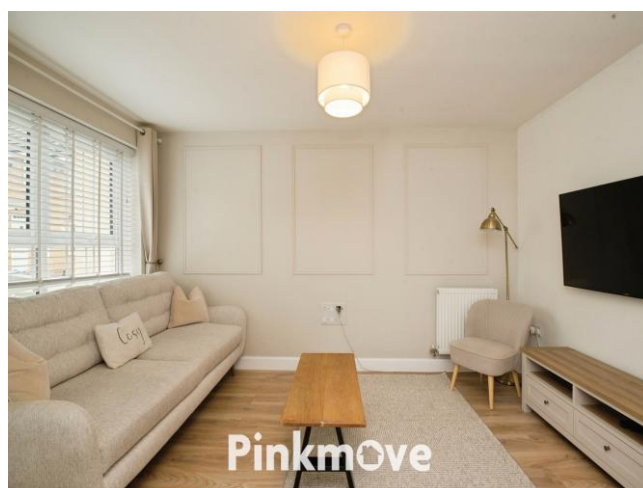
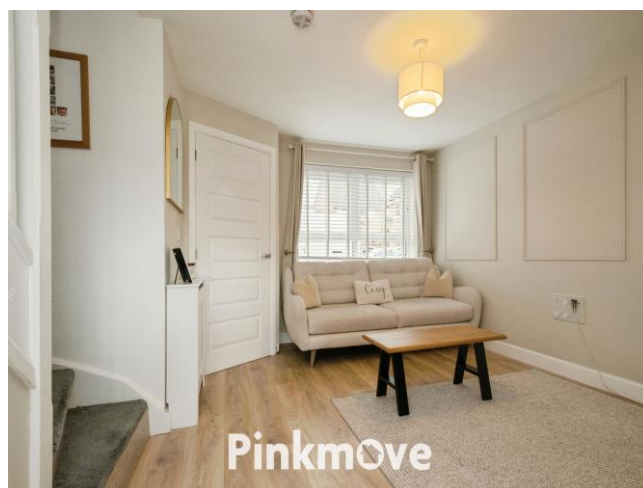
Upon entering, the bright and airy interior flows seamlessly through the ground floor, with a spacious and sociable lounge leading through to a contemporary kitchen diner. The kitchen offers ample worktop space and generous storage, making it both practical and stylish for everyday use.

Upstairs, there are two generously sized double bedrooms, with the master bedroom benefiting from a walk-in wardrobe. The modern family bathroom features a crisp white suite, complete with a shower over the bath and a glass shower screen.

Externally, the property continues to impress with its beautifully maintained rear garden, providing a tranquil space for relaxing or entertaining.

Further advantages include off-road parking for two vehicles and convenient rear access to the garden.

The property is ideally located close to a range of well-regarded schools, including Newport High School, Chuckles Nursery and Monnow Primary School. This is a fantastic opportunity for those seeking a peaceful setting without compromising on accessibility or everyday convenience.





## Accommodation

Lounge

Kitchen

Wc

Bedroom 1

Bedroom 2

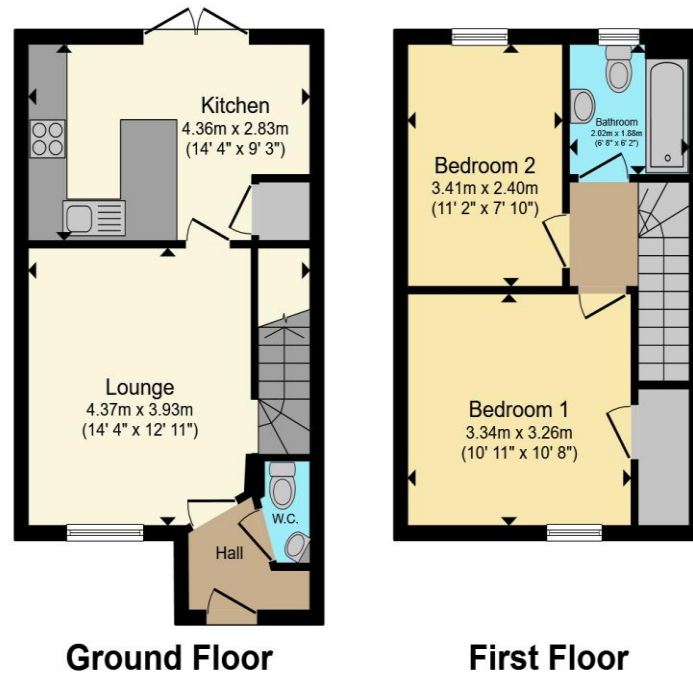
Bathroom

01633 746088

team@pinkmove.co.uk

**Pinkmove**

## Floorplan



Total floor area 62.7 sq.m. (675 sq.ft.) approx

This floor plan is for illustrative purposes only. It is not drawn to scale. Any measurements, floor areas (including any total floor area), openings and orientation are approximate. No details are guaranteed, they cannot be relied upon for any purpose and they do not form part of any agreement. No liability is taken for any error, omission or misstatement. A party must rely upon its own inspection(s). Powered by [www.localagent.com](http://www.localagent.com)

Pinkmove

## Important Information

Note while we endeavour to make our sales details accurate and reliable, if there is any point which is of particular interest to you, please contact the office and we will be pleased to confirm the position for you. We have not personally tested any apparatus, equipment, fixtures, fittings or services and cannot verify they are in working order or fit for their purposes. Nothing in these particulars is intended to indicate that carpets or curtains, furnishings or fittings, electrical goods (whether wired or not). Gas fires or light fittings or any other fixtures not expressly included form part of the property offered for sale. This computer generated Floorplan, if applicable, is intended as a general guide to the layout and design of the property. It is not to scale and should not be relied upon for dimensions. Tenure: We cannot confirm the tenure of the property as we have not had access to the legal documents. The buyer is advised to obtain verification from their solicitor or surveyor.

Peter Alan Limited is registered in England and Wales under company number 2073153. Registered Office is Cumbria House, 16-20 Hockliffe Street, Leighton Buzzard, Bedfordshire, LU7 1GN. VAT Registration Number is 500 2481 05. For activities relating to regulated mortgages and non-investment insurance contracts, Peter Alan Limited is an appointed representative of Connells Limited which is authorised and regulated by the Financial Conduct Authority. Connells Limited's Financial Services Register number is 302221. Most buy-to-let

