



Connells

Shrubbery Road
Drakes Broughton Pershore



Property Description

A well presented three bedroom family home, situated within a quiet village location and close to local amenities. This home has kitchen, family room, conservatory, driveway and garden.

Location

Drakes Broughton is a small village located in the county of Worcestershire, England. The village is situated approximately 5 miles east of the city of Worcester and is home to a population of around 1,000 people. The village is known for its beautiful countryside, historic buildings, and friendly community.

One of the most notable landmarks in Drakes Broughton is the St. Barnabas Church. The church dates back to the 12th century and is a Grade II listed building. The church is known for its stunning architecture and beautiful stained-glass windows. The church is still in use today and is a popular destination for visitors to the village.

Drakes Broughton is also home to a number of local businesses, including a post office, a convenience store, and a pub. The village is known for its strong sense of community, with many residents actively involved in local events and activities. The village hosts a number of events throughout the year, including a summer fete, a Christmas market, and a fireworks display. Overall, Drakes Broughton is a charming village with a rich history and a strong sense of community.

Property Description

Accommodation Details

Ground Floor

Entrance Hall

Ceiling light, stairs to first floor, wood laminate flooring.

Lounge

Side facing and rear facing double glazed window, coving to ceiling, dado rail, three wall light points, doors to conservatory, wood laminate flooring, two double panel radiators, electric flame fire.

Family Room/Snug

Part converted from garage, door to garden, door to front, door to shower room, radiator.

Shower Room

Rear facing uPVC double glazed window, shower, WC.

Kitchen

Rear facing uPVC double glazed window, uPVC double glazed door to garden, sink with mixer tap over, range of floor mounted units, radiator, space for cooker, space for washing machine and refrigerator.

Conservatory

Part brick and uPVC construction, ceramic tiled floors, radiator, French doors to garden.

First Floor

Landing

Side facing uPVC double glazed window, access to loft space, dado rail, doors to bedrooms and bathroom, radiator.

Bedroom One

Front facing uPVC double glazed window, ceiling light, coving to ceiling, radiator.

Bedroom Two

Rear facing uPVC double glazed window, ceiling light, coving to ceiling, radiator.

Bedroom Three

Rear facing uPVC double glazed window, coving to ceiling, ceiling light, radiator.

Bathroom

White suite with bath, wash hand basin, WC, part tiled walls, radiator.

Outside

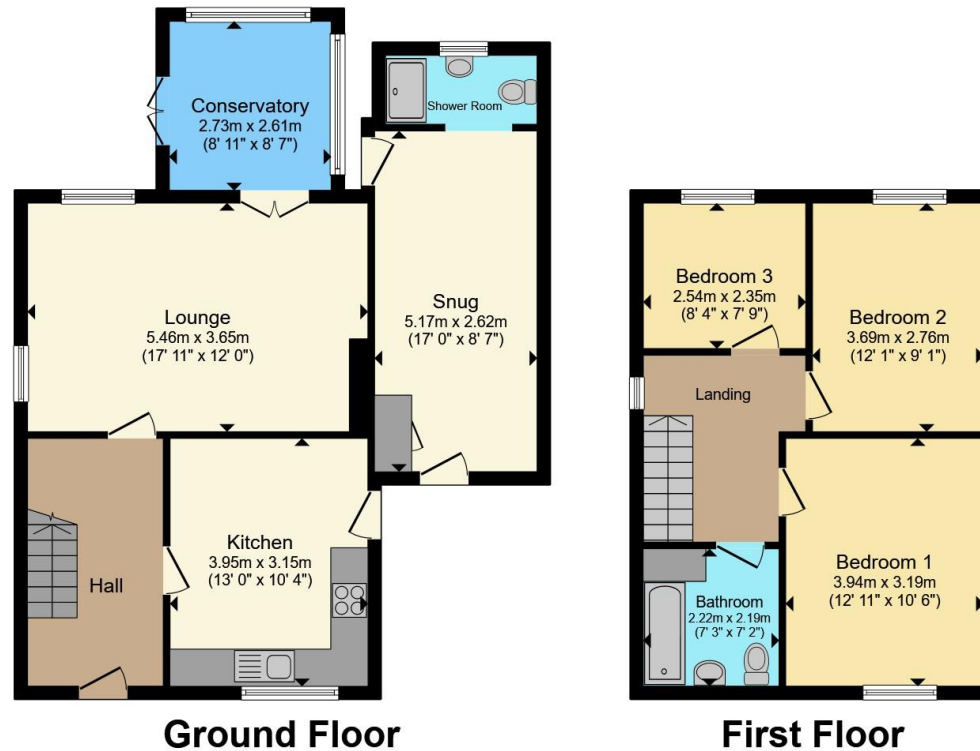
Front Garden

To the front is a low maintenance garden with chippings and driveway leading to carport.









Total floor area 110.9 m² (1,194 sq.ft.) approx

This floor plan is for illustrative purposes only. It is not drawn to scale. Any measurements, floor areas (including any total floor area), openings and orientation are approximate. No details are guaranteed, they cannot be relied upon for any purpose and they do not form part of any agreement. No liability is taken for any error, omission or misstatement. A party must rely upon its own inspection(s). Powered by www.propertybox.io



To view this property please contact Connells on

T 01905 724555
E warndonvillages@connells.co.uk

Ankerage Green
 WORCESTER WR4 0DZ

view this property online connells.co.uk/Property/WVL307620

directions to this property:

From the Warndon Villages office turn left toward Ankerage Green, Turn left onto Mill Wood Dr, At the roundabout, take the 1st exit onto Woodgreen Dr/B4638, Go through 1 roundabout, At the roundabout, take the 1st exit onto Newtown Rd/B4636, At the roundabout, take the 3rd exit onto Nunnery Way/A4440, At the roundabout, take the 1st exit onto A44, At the roundabout, take the 3rd exit onto Evesham Rd/A44, Continue to follow A44, Turn right onto Stonebow Rd, followed by a left onto Stonebow Rd where you will find the property on your left hand side as denoted by our Connells For Sale board.
 Tenure: Freehold
 Band: C



1. MONEY LAUNDERING REGULATIONS Intending purchasers will be asked to produce identification documentation at a later stage and we would ask for your co-operation in order that there will be no delay in agreeing the sale. 2. These particulars do not constitute part or all of an offer or contract. 3. The measurements indicated are supplied for guidance only and as such must be considered incorrect. Potential buyers are advised to recheck measurements before committing to any expense. 4. We have not tested any apparatus, equipment, fixtures, fittings or services and it is in the buyers interest to check the working condition of any appliances.

Connells Residential is registered in England and Wales under company number 1489613, Registered Office is Cumbria House, 16-20 Hockliffe Street, Leighton Buzzard, Bedfordshire, LU7 1GN. VAT Registration Number is 500 2481 05.

See all our properties at www.connells.co.uk | www.rightmove.co.uk | www.zoopla.co.uk

Property Ref: WVL307620 - 0005