

The logo for Melvyn Danes Estate Agents is a yellow oval with a green border. It contains the text "melvyn Danes" in green, with "ESTATE AGENTS" in smaller green capital letters below it.

melvyn
Danes
ESTATE AGENTS

A two-story brick house with a dark tiled roof and a chimney. The house features two large bay windows with white frames and light-colored curtains. The upper bay window has a red decorative panel, and the lower bay window has a blue decorative panel. A small hanging basket with yellow flowers is on the wall between the windows. The house is set on a paved driveway with a wooden fence and several potted plants in the background.

Blakemere Avenue

Yardley

Offers Over £280,000

Description

CONVENIENT CUL DE SAC LOCATION

A well presented, spacious semi detached house near to a wealth of amenities.

This spacious property is in a superb location near to a good range of shops, facilities and transport links and comprises:-

Entrance hall, lounge, extended kitchen/diner, conservatory and extended shower room to the ground floor. Upstairs there are three good sized bedrooms and a WC.

Further benefiting from central heating, double glazing, driveway, rear garage and low maintenance rear garden.



Accommodation

Driveway

Entrance Hall

5'10 max x 11' max (1.78m max x 3.35m max)

Lounge

13'11 max x 13' to bay (4.24m max x 3.96m to bay)

Extended Kitchen/Diner

14'2 max x 14'5 max (4.32m max x 4.39m max)

Conservatory

6'2 x 6'4 (1.88m x 1.93m)

Extended Shower Room

5'4 max x 11'9 max (1.63m max x 3.58m max)

Landing

6'4 x 2'7 (1.93m x 0.79m)

Bedroom One

11' to wardrobes x 12'2 to bay (3.35m to wardrobes x 3.71m to bay)

Bedroom Two

9'4 x 9'6 (2.84m x 2.90m)

Bedroom Three

9'5 x 6'6 (2.87m x 1.98m)

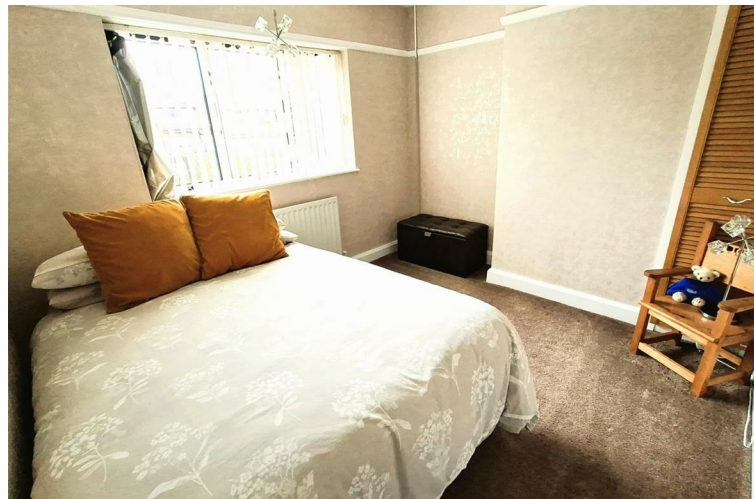
WC

4'3 x 2'9 (1.30m x 0.84m)

Rear Garden

Rear Garage

8'3 x 13'4 (2.51m x 4.06m)



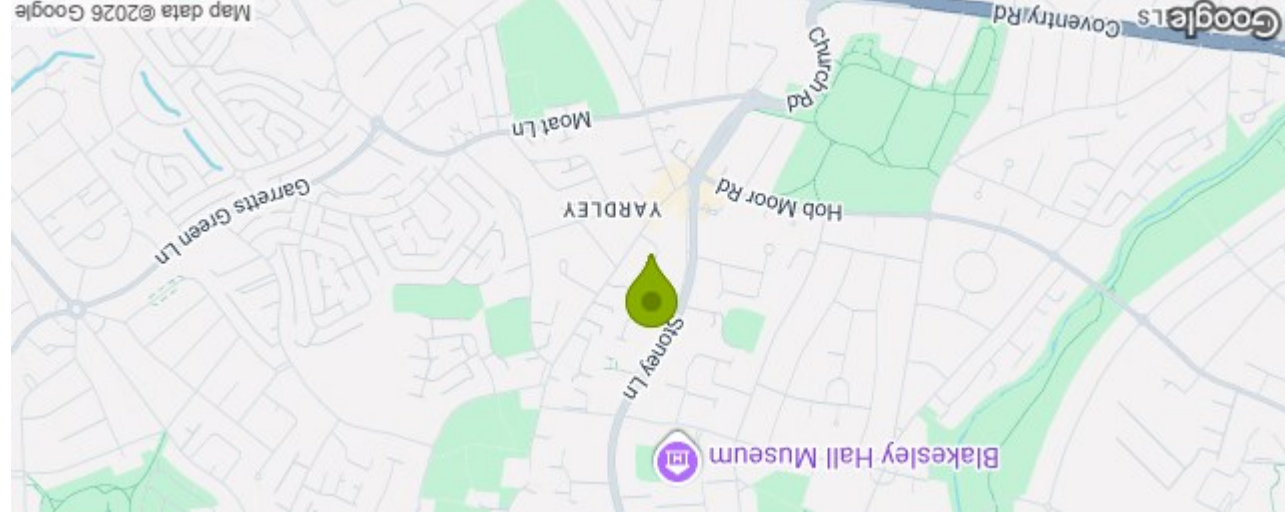
TENURE: We are advised that the property is FREEHOLD

These particulars are for general guidance only and are based on information supplied and approved by the seller. Complete accuracy cannot be guaranteed and may be subject to errors and/or omissions. They do not constitute representations of fact or form part of any offer or contract. Any Prospective Purchaser should obtain verification of all legal and factual matters and information from their Solicitor, Licensed Conveyancer or Surveyors as appropriate. The agent has not sought to verify the legal title of the property and the buyers must obtain verification from their solicitor. Photographs are provided for illustrative purposes only and the items shown in these are not necessarily included in the sale, unless specifically stated. The agent has not tested any apparatus, equipment, fixtures, fittings or services mentioned and do not by these Particulars or otherwise verify or warrant that they are in working order.

BROADBAND/MOBILE: Please refer to checker www.ofcom.gov.uk for broadband and mobile coverage at the property. From data taken on 25/03/2026 we understand that the standard broadband download speed at the property is around 10 Mbps, and the estimated fastest download speed currently achievable for the property post code area is around 1800 Mbps. Actual service availability or speeds received may be different and may vary depending on the time a speed test is carried out. Mobile coverage can vary depending on the network provider and other factors that can affect the local mobile reception and actual services available may be different depending on the particular circumstances, precise location and network outages.

MONEY LAUNDERING REGULATIONS: Under anti-money laundering legislation, we are obliged to confirm the identity of individuals and companies and the beneficial owners of organisations and trusts before accepting new instructions, and to review this from time to time. To avoid the need to request detailed identity information from vendors and intending purchasers, we may use approved external services which review publicly available information on companies and individuals. However, should those checks, for any reason, fail adequately to confirm identity, we may write to you to ask for identification evidence. If you do not provide satisfactory evidence or information within a reasonable time, we may have to stop acting for you and we would ask for your co-operation in order that there will be no delay in agreeing a sale. Any purchaser who has a provisional offer accepted via this company will be liable to pay an administration fee of £25 (incl VAT) for each person connected with the transaction to cover these checks. If we are instructed by a third party selling agent they may carry out their own AML checks and any prospective purchaser will be required to pay any additional costs involved – please speak to the office for confirmation.

REFERRAL FEES: We may refer you to recommended providers of ancillary services such as Conveyancing, Financial Services and Surveying. We may receive a commission payment fee or other benefit (known as a referral fee) for recommending their services. You are not under any obligation to use the services of the recommended provider.



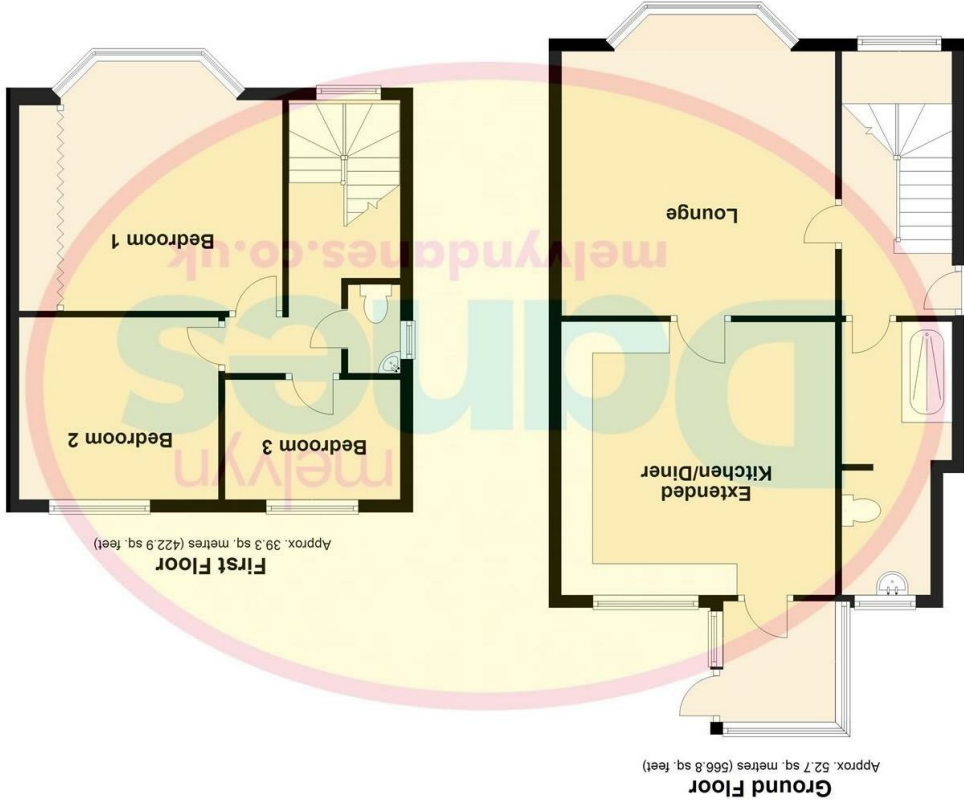
Energy Efficiency Rating	
Very energy efficient - lower running costs	(92 plus) A
(81-91) B	
(69-80) C	
(55-68) D	
(39-54) E	
(21-38) F	
(1-20) G	
Not energy efficient - higher running costs	
Current	66
Potential	73

EU Directive 2002/91/EC

England & Wales

11 Blakemere Avenue Yardley Birmingham B25 8US
Council Tax Band: C

Total area: approx. 91.9 sq. metres (989.7 sq. feet)



Please note that all measurements and floor plans are approximate and quoted for general guidance only and whilst every attempt has been made to ensure accuracy, they must not be relied on and do not form part of any contract.