



Clements estate agents



## Typleden Close, Hemel Hempstead, HP2 5YL

### Offers In Excess Of £375,000

Nestled in the Cul de Sac of Typleden Close, Highfield, this delightful terraced house offers a perfect blend of comfort and convenience. With three well-proportioned bedrooms, this property is ideal for families or those seeking extra space. The inviting lounge provides a warm and welcoming atmosphere, perfect for relaxation or entertaining guests. Adjacent to the lounge, the dining room offers a lovely setting for family meals and gatherings. Located in a friendly neighbourhood, this home is within easy reach of local amenities, schools, and parks, making it an excellent choice for those who value community living. Whether you are a first-time buyer or looking to invest, this terraced house on Typleden Close presents a wonderful opportunity to create lasting memories in a lovely setting. Don't miss the chance to make this charming property your new home.

**Entrance Hall**

**Cloakroom**

**Lounge 13'4 x 12'10 (4.06m x 3.91m)**



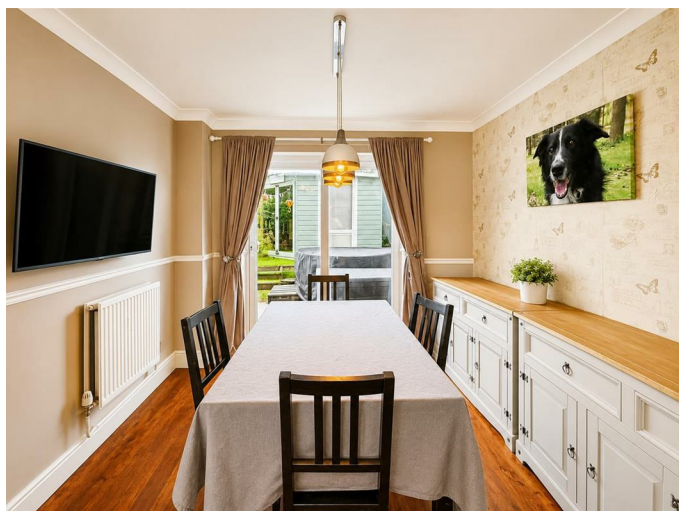
**Bedroom One 11'5 x 8'9 (3.48m x 2.67m)**



**Bedroom Two 12'7 x 8'6 (3.84m x 2.59m)**



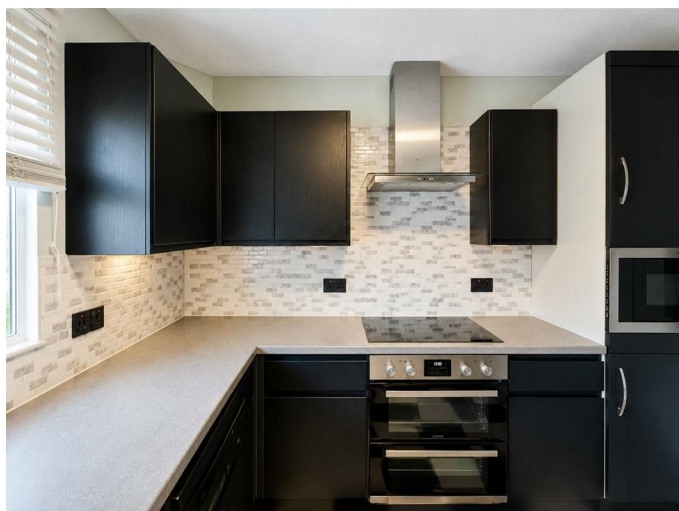
**Dining Room 9'6 x 9'2 (2.90m x 2.79m)**



**Bedroom Three 8'10 x 7'4 (2.69m x 2.24m)**



**Fitted Kitchen 10'9 x 9'3 (3.28m x 2.82m)**



**Landing**

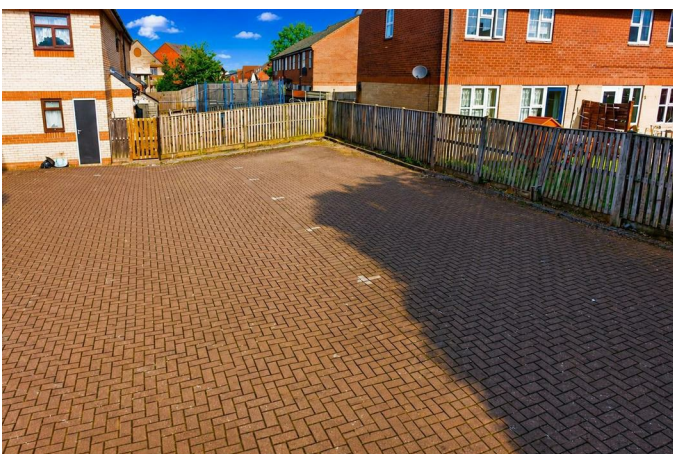
## Bathroom



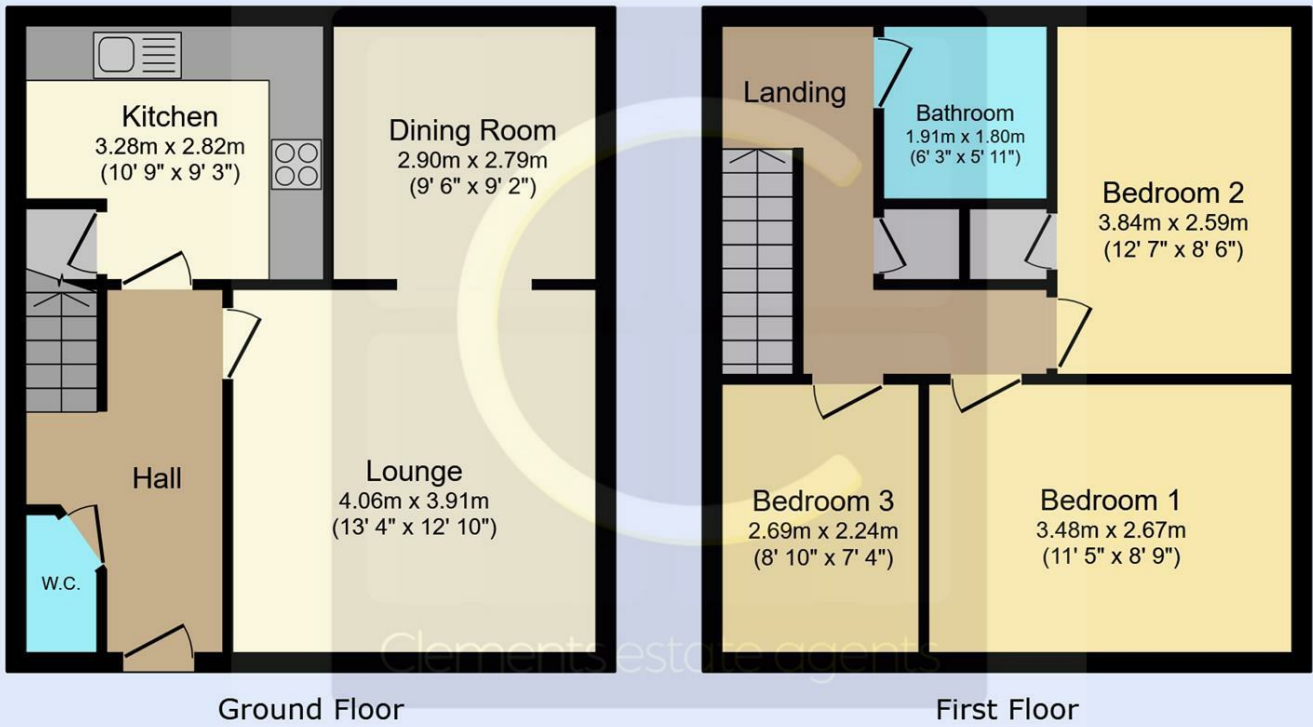
## Rear Garden



## Residents Parking



# Floor Plan



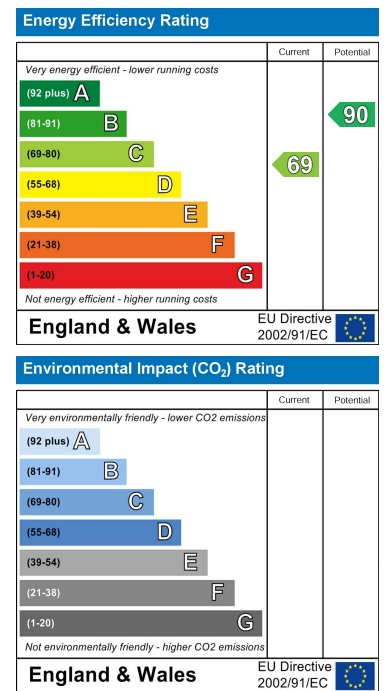
This floor plan is for illustrative purposes only. It is not drawn to scale. Any measurements, floor areas (including any total floor area), openings and orientations are approximate. No details are guaranteed, they cannot be relied upon for any purpose and do not form any part of any agreement. No liability is taken for any error, omission or misstatement. A party must rely upon its own inspection(s). Powered by www.Propertybox.io



# Area Map



# Energy Efficiency Graph



These particulars, whilst believed to be accurate are set out as a general outline only for guidance and do not constitute any part of an offer or contract. Intending purchasers should not rely on them as statements of representation of fact, but must satisfy themselves by inspection or otherwise as to their accuracy. No person in this firm's employment has the authority to make or give any representation or warranty in respect of the property.