

Eardley Crescent , Earls Court, London



£4,250 pcm

[£981.00 pcm] [fees apply]

2 bedroom(s)

Available: Available Now

A spacious two bedroom, garden flat available to rent in Earl's Court. This outstanding apartment is well sized at over 800sq ft of internal space with a conservatory leading out to an amazing private garden/patio area! The property has two double bedrooms and a spacious living room/kitchen area located just 5 minutes walk to West Brompton Station. Available unfurnished or furnished this

- Modern interior
- Huge space (810sq ft internal)
- Lots of natural light
- Conservatory
- Large Private Garden
- Unfurnished or furnished
- ASAP move
-
-
-

T: 02076919000

E: nw3lettings@davidastburys.com

W: www.davidastburys.com

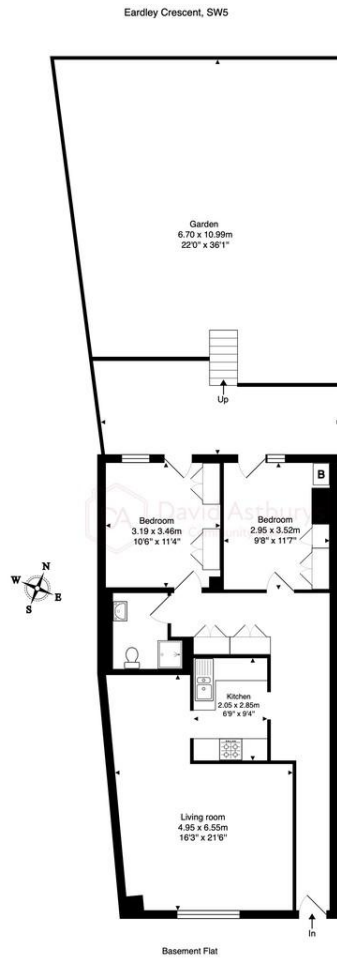
JP: www.excel-property.london/JP

A: 146 Finchley Road, London, NW3 5HS



David Astburys

Eardley Crescent , Earls Court, London



Total Area: 75.3 m² ... 810 ft² (excluding garden)

This floor plan is produced in accordance with RICS Property Measurement Standards incorporating International Property Measurement Standards (IPMS: Residential). The plan is for layout guidance only and not drawn to scale unless otherwise stated. Measurements and position of windows, door openings, rooms and any other items are approximate. Whilst all care is taken in the preparation of this plan, if any aspects of this plan are of specific importance, an independent inspection would be advised.

T: 02076919000

E: nw3lettings@dauidastburys.com

W: www.excel-property.co.uk

JP: www.excel-property.london/JP

A: 146 Finchley Road, London, NW3 5HS



David Astburys