



Connells

Poppyfield Road
Wootton Northampton



Property Description

Detached three bedroom property, offered with NO CHAIN situated the popular area of St Georges Field. In brief the property comprises of; entrance hall, with cloakroom W/C, Lounge, Kitchen/Dining area, three bedrooms with en-suite to the make and family bathroom. Externally there are gardens to the front and rear of which the rear is South Facing, also a single garage with off road parking. With many local amenities, good schools and easy access to the motorway viewings are recommended.

Entrance Hall

Front door the entrance hall, wall mounted radiator and stairs rising to first floor landing.

Cloakroom

Suite comprising a low level flush wc and wash hand basin with tiling to the splash back areas. Wall mounted radiator and double glazed window to the front elevation.

Lounge

Double glazed window to the front elevation, two wall mounted radiators and TV point.

Kitchen/ Dining Room

Fitted with a range of wall and base level units. One and a half stainless steel sink and drainer set beneath the work surface. Integrated appliances comprising an electric oven and four rings gas hob with a cooker hood over. Space for fridge freezer and plumbing for washing machine. Two wall mounted radiators and double glazed window and French door to the rear elevation. Boiler. Partly tiled walls.

First Floor Landing

Stairs rising from entrance hall with doors leading off to three bedrooms and family bathroom. Storage cupboard, access to loft space and double glazed window to the rear elevation.

Bedroom One

Double glazed window to the rear elevation, TV point and wall mounted radiator.

En-Suite Shower Room

Suite comprising a shower cubicle, low level flush wc and wash hand basin. Wall mounted radiator, extractor fan and opaque double glazed window to the side elevation.

Bedroom Two

Double glazed windows to the front and side elevation, TV point and wall mounted radiator.

Bedroom Three

Double glazed window to the rear elevation and wall mounted radiator.

Family Bathroom

Three pieces suite comprising a bath with mixer taps and shower attachment, low level flush w.c and wash hand basin. Wall mounted radiator, extractor fan and opaque double glazed window to the front elevation. Partly tiled walls.

Outside

Rear Garden

Mainly laid to lawn, patio which is ideal for entertaining, outside tap, and gated side access. Enclosed by paneled fence and brick wall.

Garage

Single garage with eaves storage, and power and light connected.

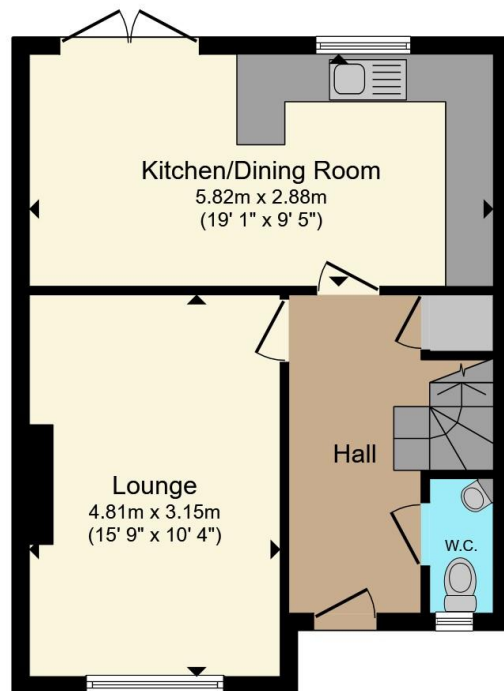
Parking

Driveway offering parking space for two vehicles.

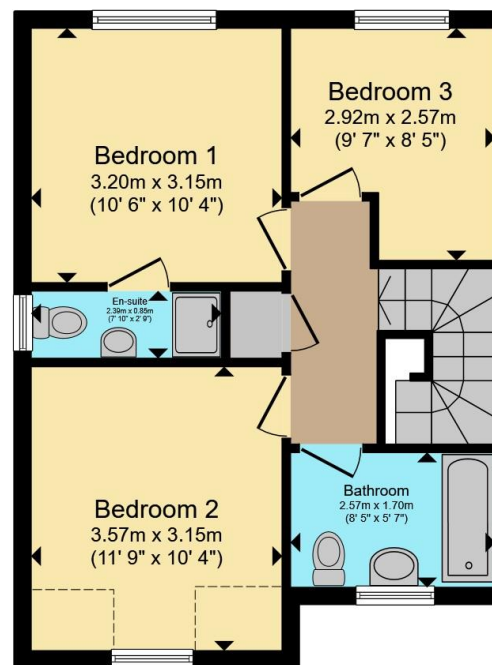








Ground Floor



First Floor

Total floor area 86.8 m² (934 sq.ft.) approx

This floor plan is for illustrative purposes only. It is not drawn to scale. Any measurements, floor areas (including any total floor area), openings and orientation are approximate. No details are guaranteed, they cannot be relied upon for any purpose and they do not form part of any agreement. No liability is taken for any error, omission or misstatement. A party must rely upon its own inspection(s). Powered by www.propertybox.io

Connells

To view this property please contact Connells on

T 01604 706644

E woottonfields@connells.co.uk

11 Tudor Court Wootton Hope Drive Wootton
NORTHAMPTON NN4 6FF

EPC Rating: B Council Tax
Band: D

Tenure: Freehold

view this property online connells.co.uk/Property/WFL408444



1. MONEY LAUNDERING REGULATIONS Intending purchasers will be asked to produce identification documentation at a later stage and we would ask for your co-operation in order that there will be no delay in agreeing the sale. 2. These particulars do not constitute part or all of an offer or contract. 3. The measurements indicated are supplied for guidance only and as such must be considered incorrect. Potential buyers are advised to recheck measurements before committing to any expense. 4. We have not tested any apparatus, equipment, fixtures, fittings or services and it is in the buyers interest to check the working condition of any appliances.

Connells Residential is registered in England and Wales under company number 1489613, Registered Office is Cumbria House, 16-20 Hockliffe Street, Leighton Buzzard, Bedfordshire, LU7 1GN. VAT Registration Number is 500 2481 05.

See all our properties at www.connells.co.uk | www.rightmove.co.uk | www.zoopla.co.uk

Property Ref: WFL408444 - 0004