



**Baysdale Croft, Mosborough**

Sheffield

Guide Price **£265,000**



## Baysdale Croft

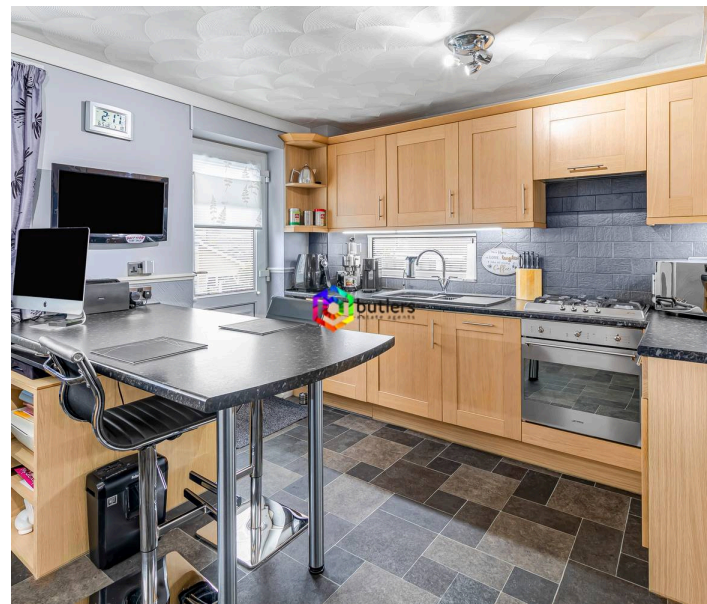
Mosborough, Sheffield

Beautifully presented 3-bed detached house in central Mosborough Village, near Ofsted Outstanding school. Features garage, driveway, open-plan kitchen, security alarm, and spacious living areas.

Council Tax band: C

Tenure: Freehold

- THREE BEDROOMS
- DETACHED HOUSE
- GARAGE AND DRIVEWAY
- KITCHEN / DINER ACROSS THE REAR OF THE HOUSE
- ENCLOSED SOUTH FACING REAR GARDEN WITH POND AND BLOCK PAVED PATIO SEATING AREA.
- SECURITY ALARM
- MOSBOROUGH VILLAGE LOCATION WITH CATCHMENT TO THE OFSTED OUTSTANDING PRIMARY SCHOOL
- GREAT FOR LOCAL TRANSPORT





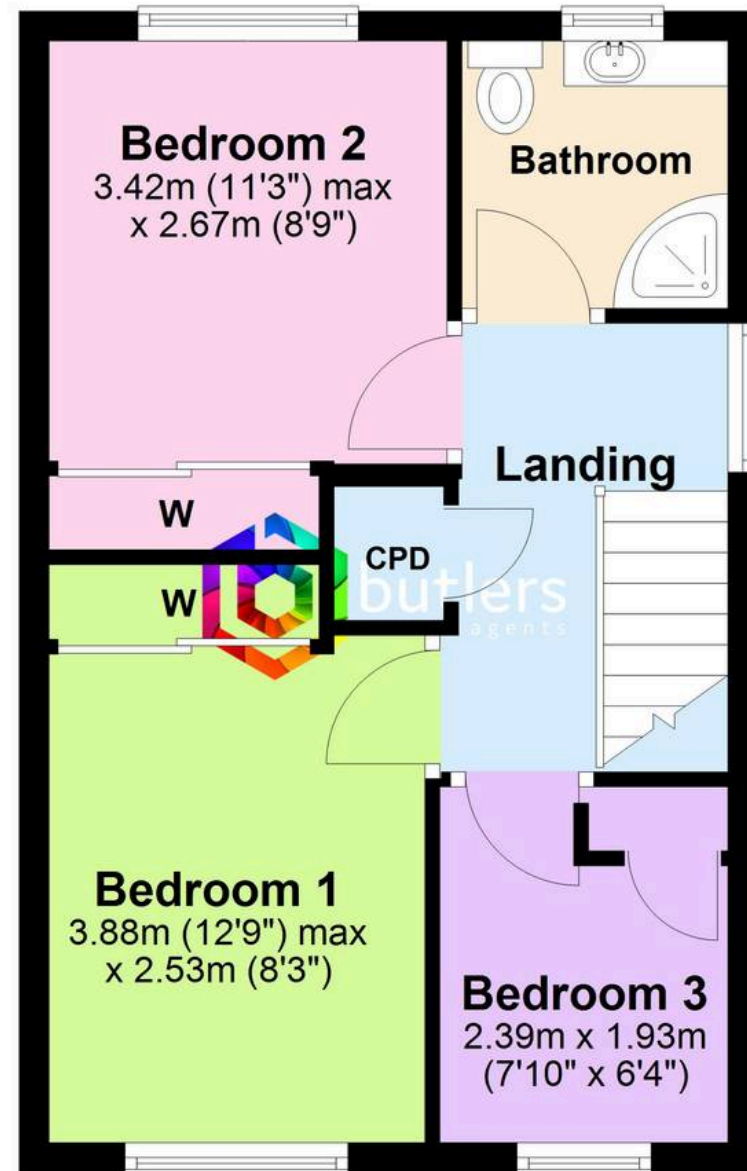
## Ground Floor

Approx. 33.7 sq. metres (363.1 sq. feet)



## First Floor

Approx. 33.9 sq. metres (364.7 sq. feet)



Total area: approx. 67.6 sq. metres (727.8 sq. feet)

Butlers Estate Agents, 60 High Street, Mosborough, Sheffield S20 5AE