



Portland Crescent, London, UB6

**Guide Price £600,000**





*4 Bedroom Semi-Detached Family Home with Stunning Garden  
Room & Loft Suite*



# Key Features

---

- 4 Bedrooms
- Loft suite
- Garden room
- Off street parking
- Residential Crescent









## 4 Bedroom Semi-Detached Family Home with Stunning Garden Room & Loft Suite

Situated in a quiet residential crescent in the heart of Greenford, this beautifully presented four-bedroom family home has been extensively modernised to an exceptional standard, offering spacious and versatile accommodation arranged over three floors.

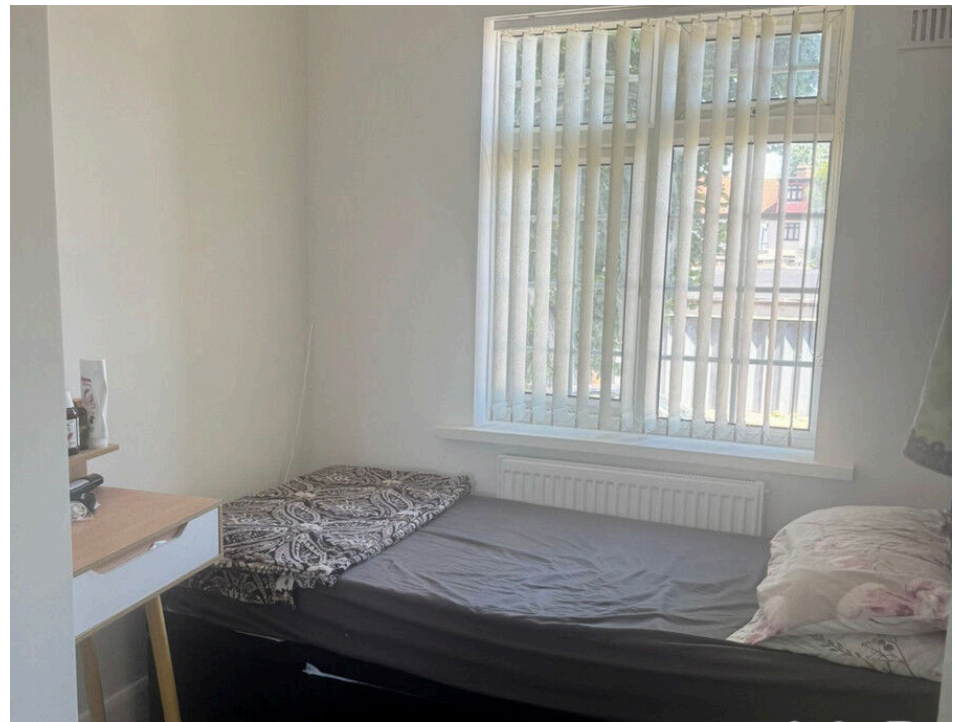
The property has been thoughtfully updated throughout, blending contemporary styling with practical family living. The welcoming entrance hall leads to a bright and spacious reception room, while the modern fitted kitchen opens onto a dining/family space, creating the ideal setting for both everyday living and entertaining.

A standout feature is the superb loft conversion, providing a generous principal bedroom complete with a stylish en-suite shower room, offering a peaceful retreat away from the main living accommodation.

Outside, the rear garden has been designed with both relaxation and functionality in mind. To the rear sits a fabulous garden room benefiting from light and power, making it ideal as a home office, gym, studio, workshop or hobby room. The garden provides an excellent space for entertaining or for families to enjoy throughout the year.

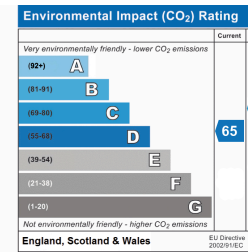
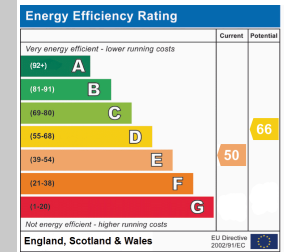
Further benefits include modern family bathroom facilities, well-proportioned bedrooms, and off-street parking (subject to





ESTAT





**Tenure Type:** Freehold  
**Council Tax Band:** D  
**Council Authority:** Ealing