



Rosamond House
4 Elizabeth Court, SW1P

CHESTERTONS





A Modern, very well presented two double bedroom apartment finished to an excellent standard situated in the prestigious Westminster Quarter development. This luxury apartment boasts a good sized living area with an open-plan modern well equipped kitchen and a very generous private patio garden. Residents of Westminster Quarter benefit from excellent facilities, with a 24 hour concierge service, exclusive private resident's gym and access to a landscaped roof terrace with fabulous views of Westminster. Located in the heart of London, residents are in close proximity to some of London's most iconic landmarks and buildings.

Monck Street is excellently located for a variety of transport links including Westminster (Jubilee, Circle and District Underground), Victoria (Victoria, Circle and District Underground, Mainline station) as well as the green open spaces of both St James's and Green Park.

- Modern 2 Bedroom 2 Bathroom flat
- Winter Garden Balcony
- Roof Garden with Spectacular Views of London's Iconic Landmarks
- Benefits include: 24 Hour Concierge, Comfort Cooling, Residents Gym
- No Onward Chain
- Located in Prime Westminster

Asking Price £1,150,000

Energy Efficiency Rating		Current	Potential
92-100	A		
81-91	B	88	88
69-80	C		
55-68	D		
39-54	E		
21-38	F		
1-20	G		

Not energy efficient - higher running costs

England, Scotland & Wales EU Directive 2002/91/EC

Tenure: 999 years commencing on 20 November 2015
Service Charge: £8,779 Per Annum
Ground Rent: £750 Per Annum
Local Authority: City of Westminster
Council Tax Band: F

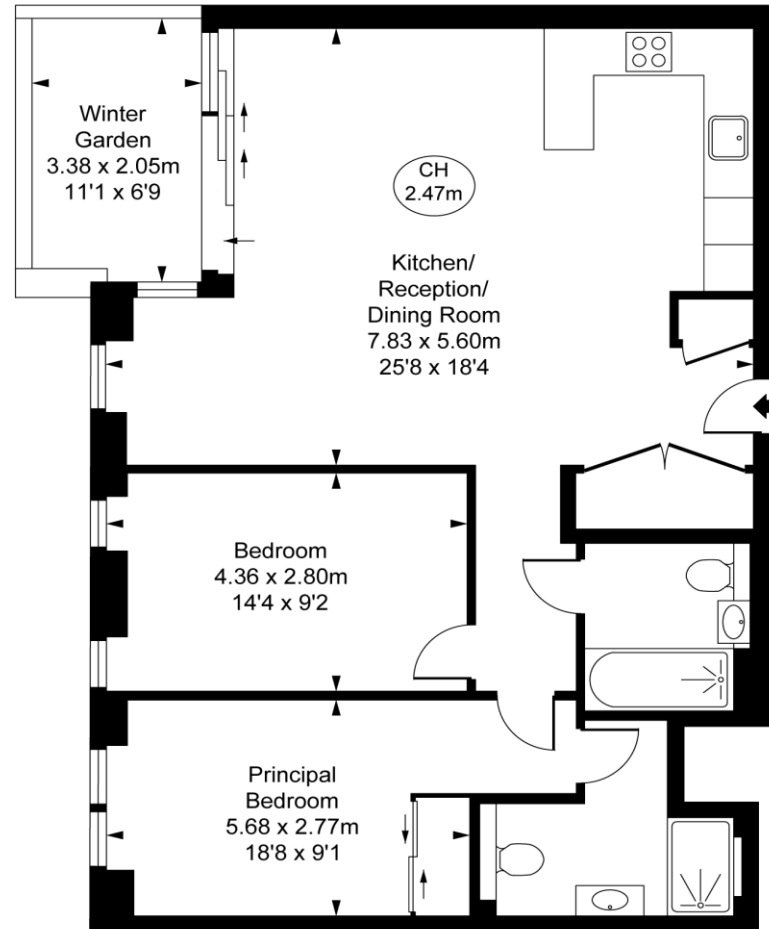
Chestertons Westminster & Pimlico Sales

105 Wilton Road
 London
 SW1V 1DZ
 westminster@chestertons.co.uk
 020 3040 8201
 chestertons.co.uk

Rosamond House,
Elizabeth Court, SW1P

Approximate Gross Internal Area
81.39 sq m / 876 sq ft
(Excluding Winter Garden)

(CH = Ceiling Heights)



Second Floor

This plan is not to scale. It is for guidance and not for valuation purposes.
All measurements and areas are approximate only, and have been prepared in accordance with the current edition of the RICS Code of Measuring Practice.
© Fulham Performance

Chesterton UK Services Limited trading as Chestertons for themselves and for the vendor of this property whose agents they are, give notice that (i) these particulars do not constitute any part of an offer or contract, (ii) all statements contained within these particulars are made without responsibility on the part of Chestertons or the vendor, (iii) whilst made in good faith, none of the statements contained within these particulars are to be relied upon as a statement or representation of fact, (iv) any intending purchasers must satisfy themselves by inspection or otherwise as to the correctness of each of the statements contained within these particulars, (v) the vendor does not make or give either Chestertons or any person in their employment any authority to make or give representation or warranty whatsoever in relation to this property. Wide angle lenses may be used. ©Copyright Chestertons | Chesterton UK Services Limited | Registered Office 40 Connaught Street, Hyde Park, London W2 2AB Registered Company Number 05334580.



This paper is
100% recyclable