



FLEXIAGENT



## 20 Duke Street

Southport, PR8 1LW

**£850 Per Month**

This charming first-floor flat on Duke Street offers a delightful living experience. Se.

Upon entering, you are welcomed into a comfortable reception room, perfect for relaxation or entertaining guests. The flat boasts a well-appointed bathroom, ensuring convenience and privacy. The layout is thoughtfully designed to maximise space and light, creating a warm and inviting atmosphere throughout.

One of the standout features of this property is the availability of parking for one vehicle, a valuable asset in this bustling area. The location is superb, with easy access to local amenities, shops, and the beautiful coastline that Southport is renowned for.

This flat presents an excellent opportunity for those looking to rent in a vibrant community, combining comfort, practicality, and a prime location. Don't miss the chance to make this lovely flat your new home.

- Two bedroom first floor flat
- Bright reception room
- Modern bathroom
- Central Southport location
- Close to local amenities
- Easy access to transport
- Available to rent now
- Viewing recommended

### Viewing

Please contact our Flexi-Agent Southport Lettings Office on 01704 889455 if you wish to arrange a viewing appointment for this property or require further information.



2



1



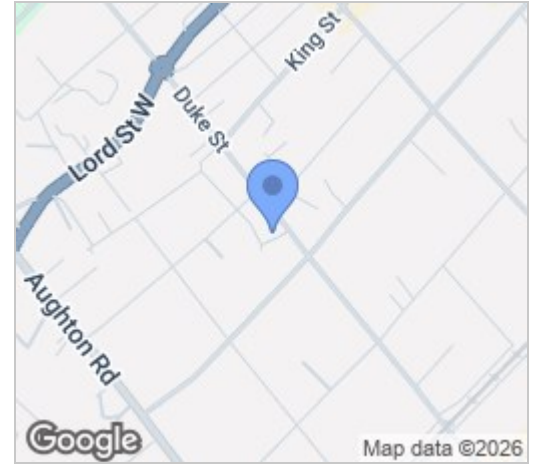
1



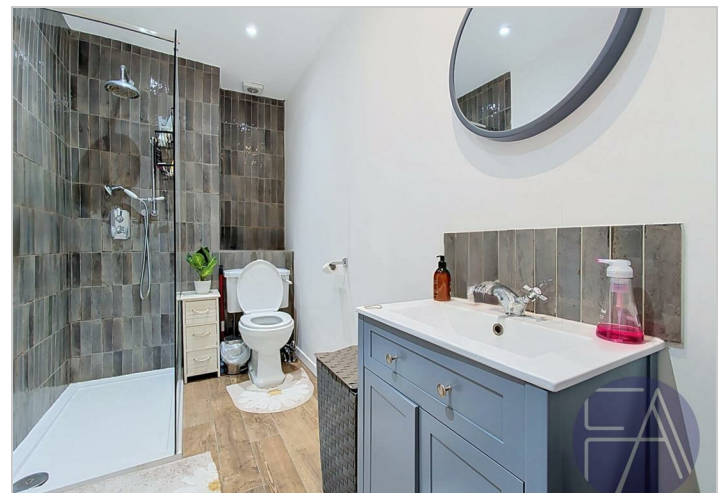
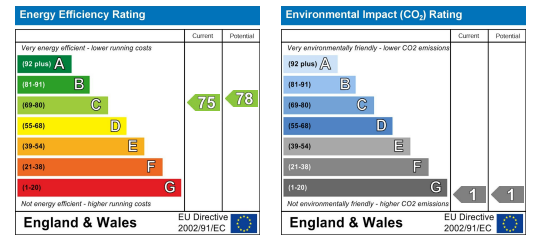
## Floor Plan



## Area Map



## Energy Efficiency Graph



These particulars, whilst believed to be accurate are set out as a general outline only for guidance and do not constitute any part of an offer or contract. Intending purchasers should not rely on them as statements of representation of fact, but must satisfy themselves by inspection or otherwise as to their accuracy. No person in this firm's employment has the authority to make or give any representation or warranty in respect of the property.