



MORAY ROAD, N4

£750,000

Split Level
Private Terrace
Share of Freehold
Bright & Airy
Period Conversion
Excellent Transport Links

@marshandparsons
marshandparsons.co.uk

MARSH &
PARSONS



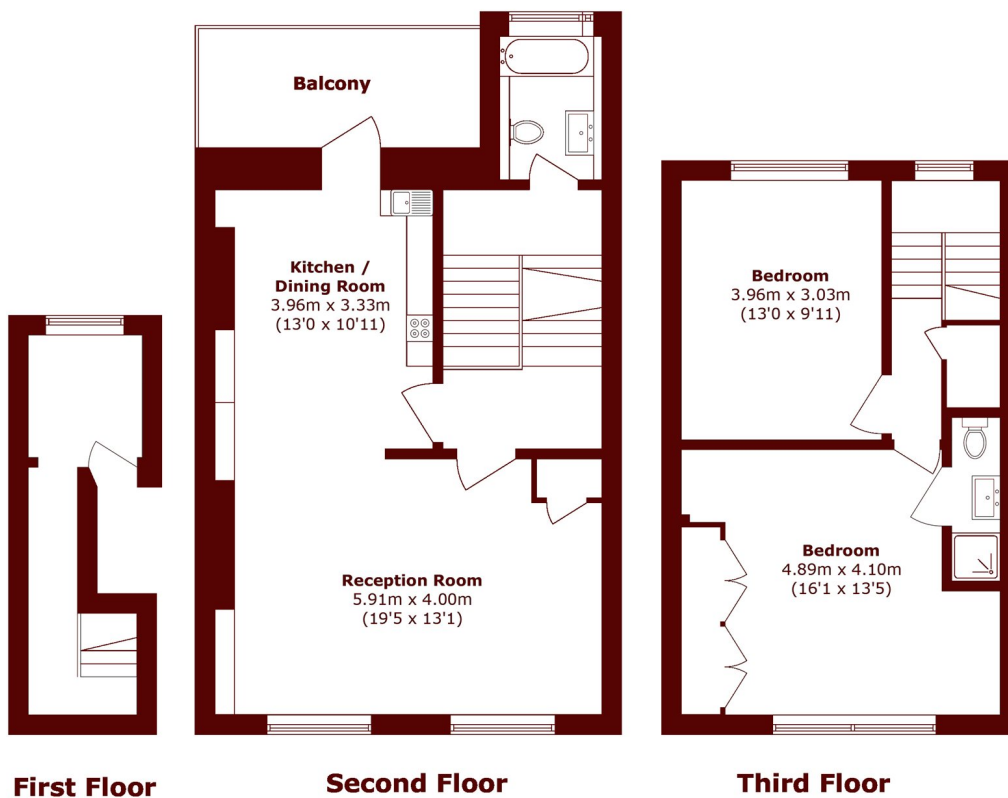
ABOUT THE PROPERTY

A beautifully renovated, split-level, top-floor apartment featuring an open-plan kitchen and living area, a generous roof terrace, two large double bedrooms, and two bathrooms. The property also benefits from access to a large shared garden and is offered with a share of freehold.

Moray Road is a quiet residential street ideally located near Finsbury Park, approximately 0.3 Miles from Finsbury Park Station (Victoria & Piccadilly lines, National Rail). The area offers excellent transport links, a vibrant mix of cafés and shops. Easy access to nearby green spaces and the benefit of excellent nursery and primary school catchments.



STEP INSIDE MORAY ROAD



Total area (approx.): 100.0 sq. m (1076.4 sq. ft)
Balcony area (approx.): 9.8 sq. m (105.4 sq. ft)

Camden
020 7244 2200

Energy Rating: D We aim to make our particulars both accurate and reliable. However, they are not guaranteed; nor do they form part of an offer or contract. If you require clarification on any points then please contact us, especially if you're traveling some distance to view. Please note that appliances and heating systems have not been tested and therefore no warranties can be given as to their good working order

MARSH &
PARSONS