



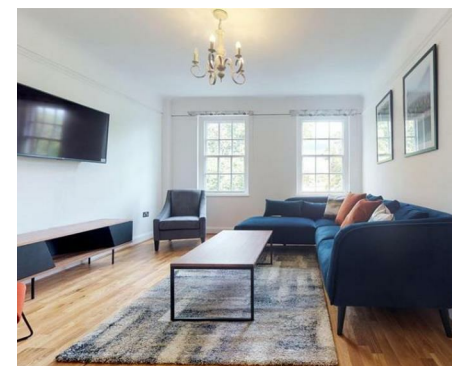
NEWINGTON  
LONDON

3 Bedrooms

Apartment

Located in London

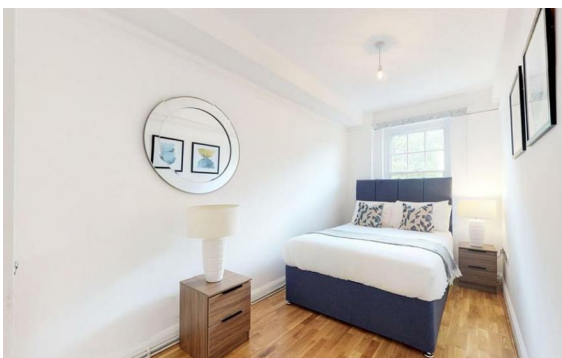
£1,475 Per Month



info@newingtonstates.com

<http://www.newingtonstates.com>

020 7724 2233



A bright and spacious 3-bed apartment set on the fifth floor with lift access, offering excellent views across London. The property features a spacious reception room, separate kitchen, three double bedrooms (one en-suite) and a family bathroom.

Residents benefit from a 24-hour porter and an excellent location close to Baker Street, Marylebone Village and Regent's Park, with superb transport links nearby.

EPC rating: D

### Energy Efficiency Rating: D

Agents Note: Whilst every care has been taken to prepare these particulars, they are for guidance purposes only. All measurements are approximate and are for general guidance purposes only and whilst every care has been taken to ensure their accuracy, they should not be relied upon and potential buyers/tenants are advised to recheck the measurements.

# NEWINGTON LONDON

60 Upper Montagu Street

London

W1H 1SN

020 7724 2233

[info@newingtonstates.com](mailto:info@newingtonstates.com)

<http://www.newingtonstates.com>