



Brook Road South, TW8  
£775,000

**Dexters**



## Brook Road South, TW8

A well-presented three bedroom Victorian terraced family home, set on a popular residential road just moments from Brentford Station. The property offers a blend of period charm and practical living space, making it an ideal home for growing families.

Brook Road South is located within half a mile of the exciting redeveloped Brentford High Street and Brentford Station which has direct fast links to Waterloo. The River Thames is also a short walk way and associated pubs and restaurants.

### Features

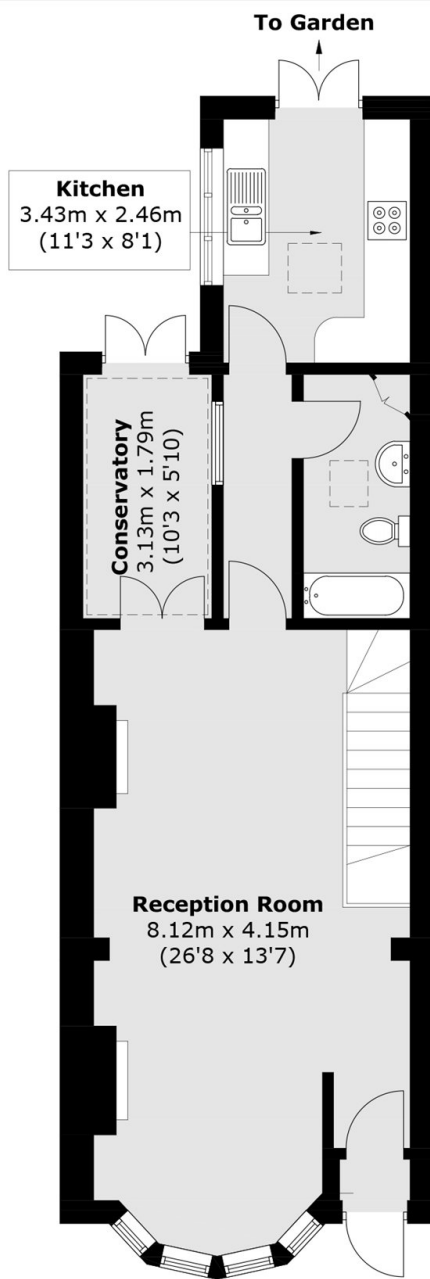
- Victorian
- Three Bedrooms
- Two Bathrooms
- Large Garden
- Garden Office
- Close To Transport



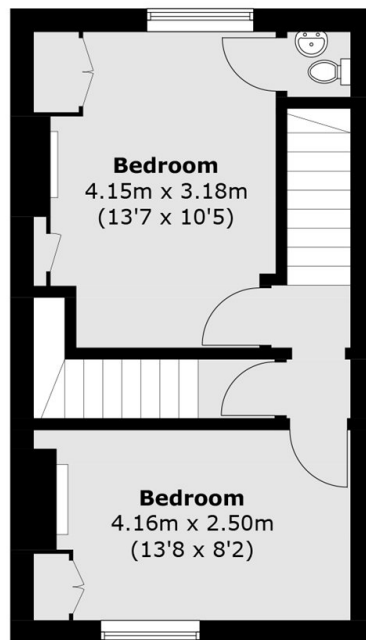




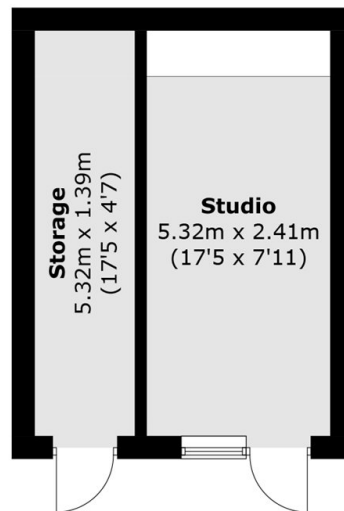
# Brook Road South, Brentford, TW8



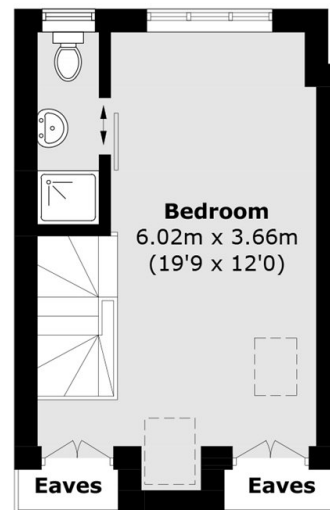
**Ground Floor**



**First Floor**



**Garden House**  
(Not Shown In Actual  
Location / Orientation)



**Second Floor**

Total area (approx.): 108.0 sq. m (1,162.5 sq. ft)  
(Excluding Eaves)

Garden House: 20.9 sq. m (225.0 sq. ft)