



Hitchin Square, E3

£784 Per week

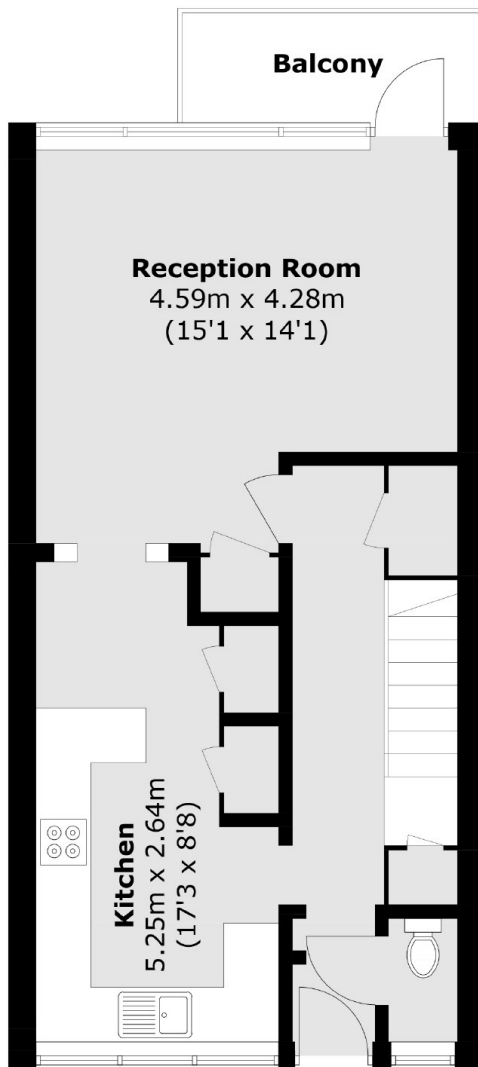
A four double bedroom maisonette in Hitchin Square. This property comes with four double bedrooms, separate kitchen with all built appliances, the property has recently been renovated throughout and has a private balcony.

Roman Road is a main route between Bethnal Green and Mile End underground stations with various amenities, coffee shops and a popular weekend market nearby.

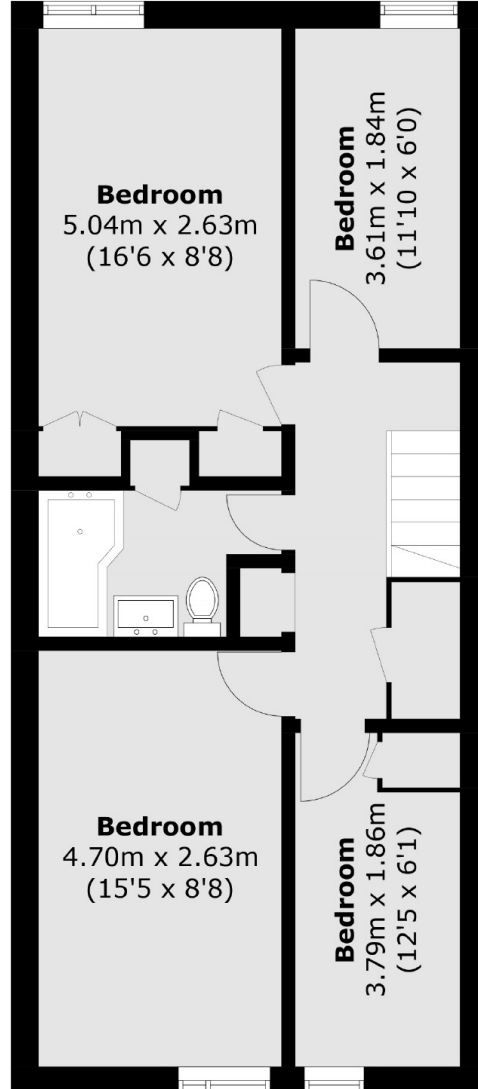
Features

- Four Double Bedrooms
- Fully Fitted Kitchen
- Separate W/C
- Maisonette
- Private Balcony
- Furnished

Hitchin Square, London, E3



Second Floor



Third Floor

Total area (approx.): 97.3 sq. m (1,047.3 sq. ft)
Balcony area (approx.): 3.9 sq. m (42.0 sq. ft)