



Victoria Street

Earls Barton, Northamptonshire

oriordanbond
SALES & LETTINGS



GROUND FLOOR
446 sq. ft. (41.4 sq.m.) approx.



1ST FLOOR
348 sq. ft. (32.3 sq.m.) approx.



Victoria Street

Earls Barton

NN6 0LJ

PRICE £195,000

A spacious two double bedroom Victorian terraced property offered for sale with no onward chain. This lovely property, located within a short walk to the village centre, offers an open plan sitting/dining room, re-fitted kitchen, two good size bedrooms and family bathroom with a good size garden.

Accommodation comprises entrance hall, open plan sitting/dining room with feature arch, re-fitted kitchen with appliances and bathroom with shower over the bath, first floor landing and two double bedrooms. Outside, the property is located just off the Wellingborough Road with retained courtyard garden. The enclosed rear garden has flower borders and patio area. Further benefits include replacement uPVC windows and doors and electric storage heating. (B/793/S)

Additional information

- Council Tax Band: B
- Energy Efficiency Rating: E

Viewing

Viewing strictly by appointment – details below

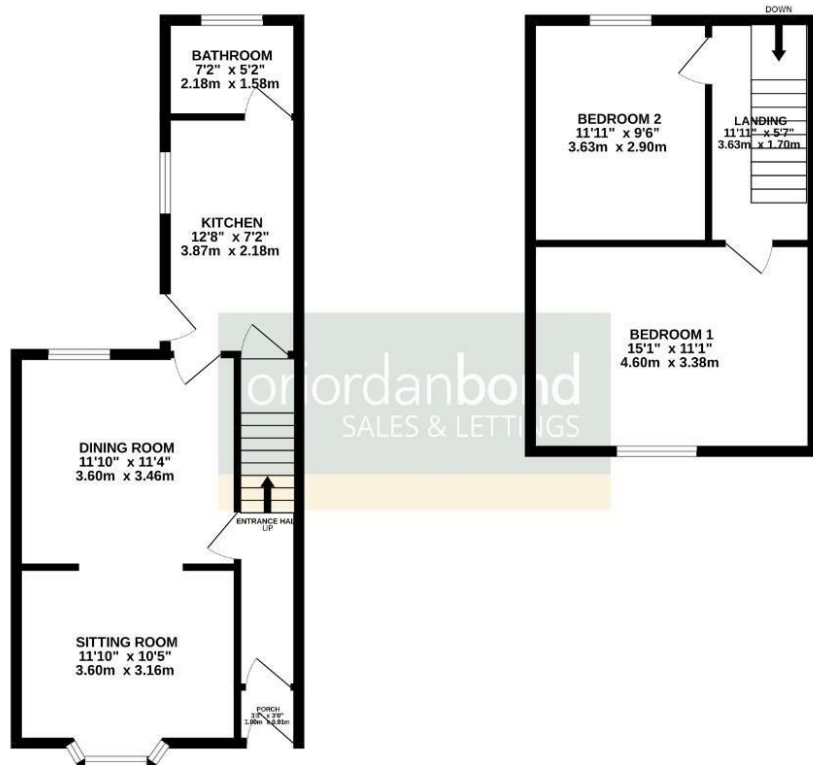
Disclaimer

O'Riordan Bond Estate Agents Limited has not tested apparatus, equipment, fittings or services and so cannot verify they are in working order. The buyer is advised to obtain verification from their solicitor or surveyor.

O'Riordan Bond Earls Barton Sales

01604 810088

earlsbarton@oriordanbond.co.uk



TOTAL FLOOR AREA: 793 sq. ft. (73.7 sq.m.) approx.
Whilst every attempt has been made to ensure the accuracy of the floorplan contained here, measurements of doors, windows, rooms and any other items are approximate and no responsibility is taken for any error, omission or misstatement. This plan is for illustrative purposes only and should be used as such by any prospective purchaser. The services, systems and appliances shown have not been tested and no guarantee as to their operability or efficiency can be given.
Made with Metreplan 6/2005

