



THURLOW PARK ROAD, SE21

£400,000

Split-Level
Large Multi-Use Loft Room
Period Conversion
West Dulwich
Private Off Street Parking
Energy Rating: D

@marshandparsons
marshandparsons.co.uk

MARSH &
PARSONS



ABOUT THE PROPERTY

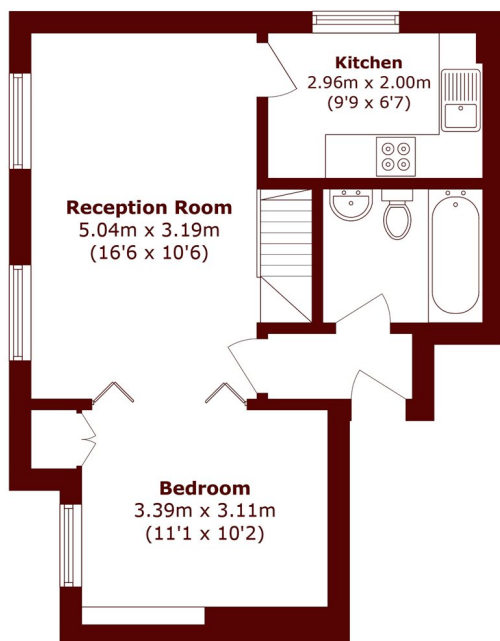
Set within an impressive period building, this characterful flat is arranged over the upper floors, spanning 818 sq ft and offering a smart blend of original charm and contemporary style.

The second floor features a bright and generous reception room with large windows and plenty of natural light, a well-proportioned kitchen, alongside a generous double bedroom and a three-piece bathroom. Stairs lead up to a spacious loft room on the third floor, this versatile space benefits from eaves storage and can comfortably serve as a home office, guest room, studio, or second living area. The property further benefits from a private and designated off-street parking space directly in front of the

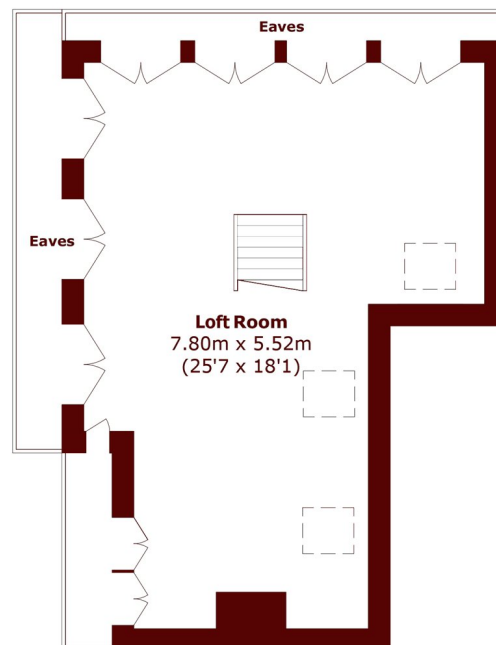


STEP INSIDE

THURLOW PARK ROAD



Second Floor



Third Floor

Total area (approx.): 76.0 sq. m (818.0 sq. ft)

Brixton
020 7733 4595

Energy Rating: D We aim to make our particulars both accurate and reliable. However, they are not guaranteed; nor do they form part of an offer or contract. If you require clarification on any points then please contact us, especially if you're traveling some distance to view. Please note that appliances and heating systems have not been tested and therefore no warranties can be given as to their good working order

**MARSH &
PARSONS**